



Alberta
Foundation
for the Arts

December 2023

EFAC

in this issue...

critiques	2-4
what's in your closet?	6
black cat ranch retreat	8
fostering artistic growth	9
paint brush guide	10
our sponsors	11

MEMBERS ONLY

meeting minutes	12-14
committee phone list	16-17

cover photo by Rob Guetre

EST. 1921
EDMONTON ART CLUB
edmontonartclub.com



Meet Randy Hayashi, our critic for the November meeting.

I WAS BORN IN 1968 IN EDMONTON, ALBERTA and continue to make Edmonton my home with regular trips to the mountains and west coast for inspiration.

I graduated from the Fine Arts program at Grant MacEwan College and continued at the University of Alberta with a Bachelor of Fine Arts Degree in 1990 and a Bachelor of Education Degree in 2000.

Having worked as a graphic designer for over 20 years, I was eager to put the brush to the canvas again and began a full time career as an artist in 2010. My work is represented in galleries across Canada and I am grateful for the opportunity to work from home as well as artist-in-residence opportunities through these galleries.

Because of my love of the mountains, hiking, canoeing and biking, I tend to create images that are reminders of personal experiences. I enjoy the satisfaction that comes when my art resonates with the viewer's experience as well.

EXCERPTED FROM hayashi.ca/about-ba



JANET FRASER

Excellent technique. You made some good compositional decisions which create interest. The main branch going from big to small enhances depth and movement. The main branch is pronounced and makes this a great composition.



DONNA CHAMBERLAND

Nice work with the snow, the shadows express a peaceful scene. Good size variation in the trees. You could omit the tree shape in the upper right corner, allowing for more sky. As we usually read from left to right the river could wrap around the bridge and towards the focal point.



MYRNA WILKINSON

Beautifully rendered details! The tonal perspective excellent. The trees in the back could be pushed even further back by changing those values. The cast light on the buildings and water is well rendered.



JOHANNE SEPTOU

I like the big chunky leaves. The quietness of the the lower right is a nice rest spot. The outlines are a unique treatment of edges, and could vary in thickness throughout the picture.

CRITIQUES (continued)



BETTY DEAN

Nice interruption of the plums with the leaves and twigs. The vines and leaves break up the circular patterns. The focal point is noticeable and well rendered in this successful composition. Good job on overlapping the shapes which can be tricky to do. Might try to exaggerate the focal point as it's closer to the viewer.



SERAYA SMIT

Good use of warm colours and values in the foreground. The details here are nice. The trees (trunks and foliage) in the back ground should be more varied in thickness and shape. The lightness receding towards the background gives a successful illusion of space.



JANI GALARNEAU

Looks very good! Might need to add a few high lights into the hair to help differentiate it from the record. Great job of bringing the different media together.



RICHARD ST. AMANT

The leaves add interest to this piece. The slight hint of different colours makes it interesting as well. This would be very cool as a standalone or grouped with similar pieces on a wall.



FRANCES HESSELS

That's a beautiful portrait, well done! Good job on the skin tones and the values. The shoulders could be extended to off the page to feel more natural. The highlights in the hair could be softened, but that is a personal choice. You have an excellent command of watercolour techniques.



LORIE MEYER

This is a nice watercolour technique, some areas soft and others more defined. The effect of watercolours for the feathers is rendered beautifully. The right eye could be brought out a touch more for perspective. The beak could be lightened slightly with a bit of highlight to enhance its volume and indicate details such as a nostril. Adding a little cast shadow under the beak would work help. I like the way you introduced different colours.

CRITIQUES (continued)



JENNY RODRIGUE

I like the variety of green colours in the trees. They could, however, do with grayer values going off into the distance. Suggest adding blueish cast shadows in the snow. The snow line is a little too linear.



RHEA JANSEN

A well rendered subject. Three figures is better than two and these lambs are well positioned on the canvas. A few darker cast shadows are needed to contrast with the reflected light underneath the lambs' bodies. The warm and cool colours are nicely balanced.



YVONNE BILAN-WALLACE

Nice composition. Earthy and organic. Suggest overlapping some of the shapes as they seem repetitive. Really unique art.



ADA WONG

The tree immediately grabs the viewer's attention and is well rendered. The rock in front of the tree has a nice weight to it. The water coming into the pond could use a few more rocks. Compositionally, this painting could even be narrowed to include just the left half of the view. The rendering of that waterfall is very nice.

Meet Our Executive



Seraya Smit
President



Jani Galarneau
Vice President



Penny Lamnek
Treasurer



Rhea Jansen
Past President



Michaela Yanish
Recording Secretary



Diana Panizzon
Secretary

Jake's Framing

10441 123 St, Edmonton, Alberta T5N 1N8 P: 780.426.4649 E: jake@jakesframing.com

Jake's Framing offers superior custom picture framing including museum-grade picture framing, specialized mat-cutting, canvas painting stretching, dry-mounting, and engraving.

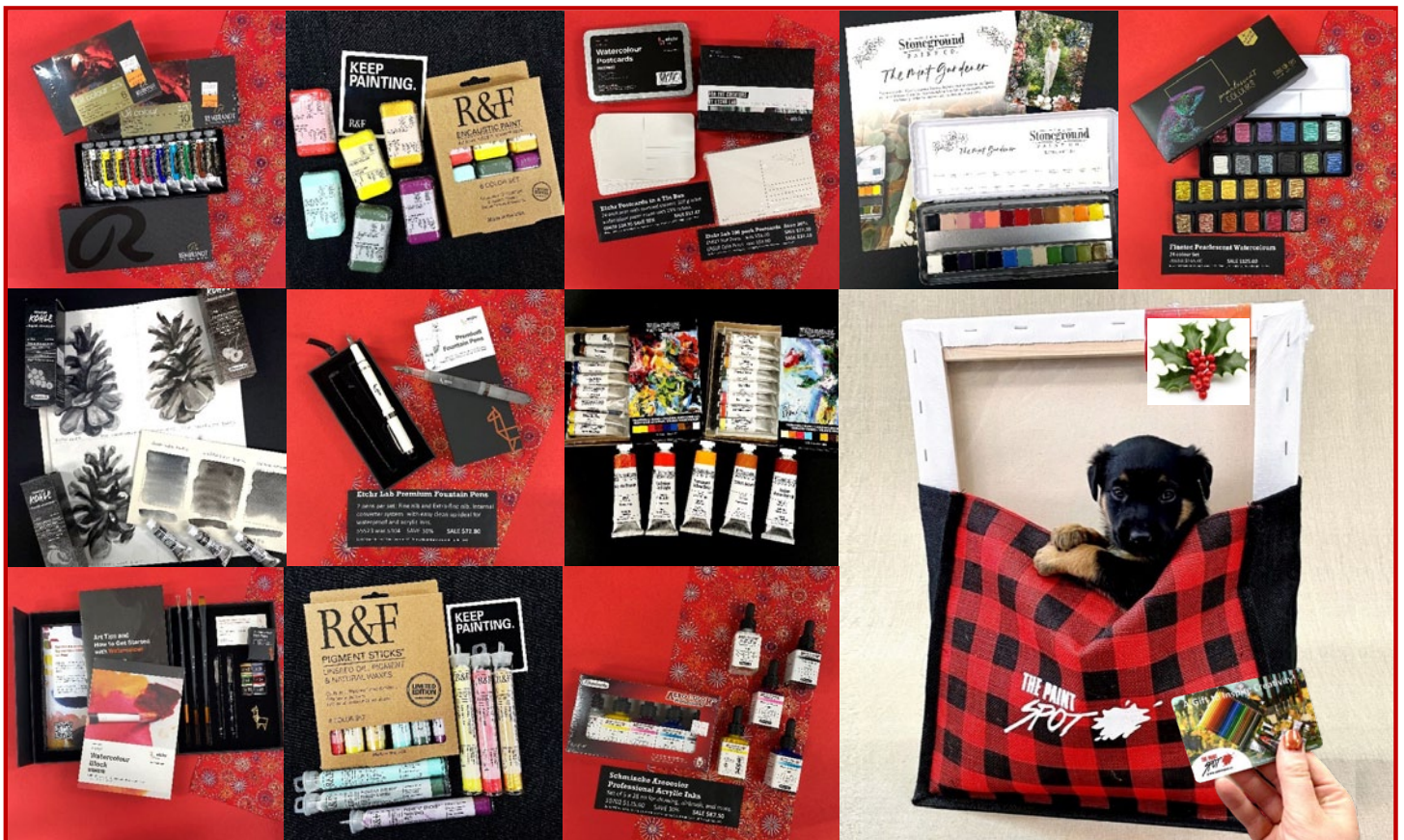
"I strive to provide the best customer service in the industry at a fair price. Please give me a chance to frame your artwork and I promise you won't be disappointed."

Jake Lewis Owner of Jake's Framing since 1993

Looking for pre-made frames?
Jake recommends VESTATE



16602 - 114 Ave NW
Ph. 780 433 1695



10032 81 AVE info@paintspot.ca
EDMONTON AB P: 780 432 0240
PAINTSPOT.CA

A gift card always fits.
Buy in store or online.

GALLERY

ART SUPPLIES

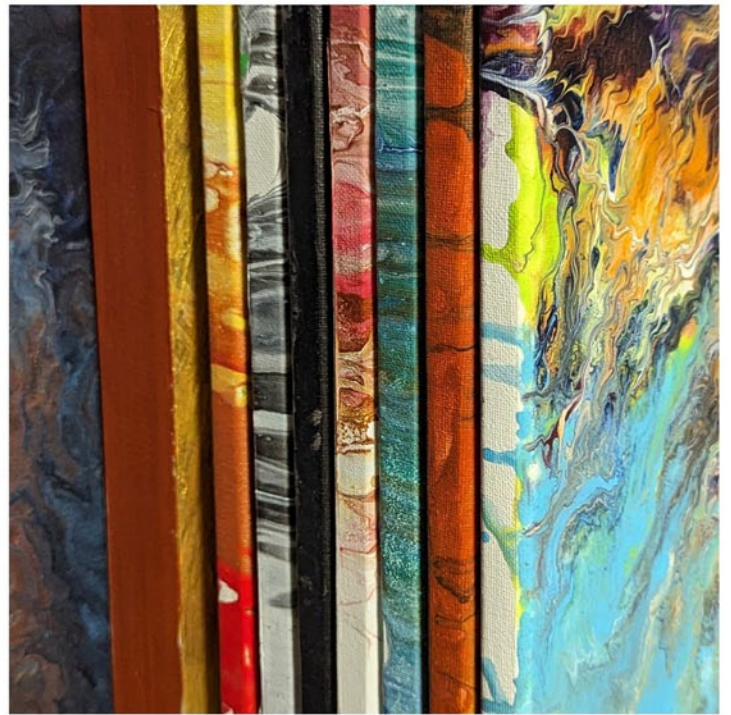
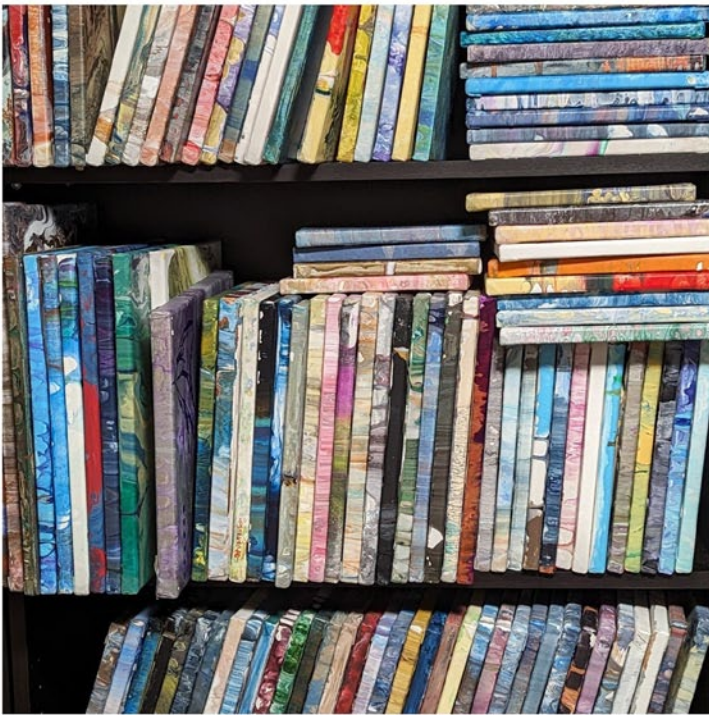
ART CLASSES

CLOSET ARTIST

AT WORK

what's in your closet?

closet courtesy of Mary Frances-Fitzgerald





THE GILDED RABBIT

Art Supplies & Framing

20% Discount for EAC
Members

10% Discount for All
Students and Seniors

10104 149 Street
780.481.6950
thegildedrabbit.ca

 @gilded_rabbit

 thegildedrabbit



your one resource for

art supplies

PAINT • BRUSHES • MATT BOARD • PENCILS
PENS • SKETCH PADS • CANVAS • EASELS
AND MUCH MORE!



Check Out our App!!

Download our app and access our
vast selection of products anywhere



11116 - 120 street, edmonton, alberta
Ph: 780.455.7983 fx: 780.454.5204
e: info@deltaart.ca 1.888.455.1606

www.deltaart.ca

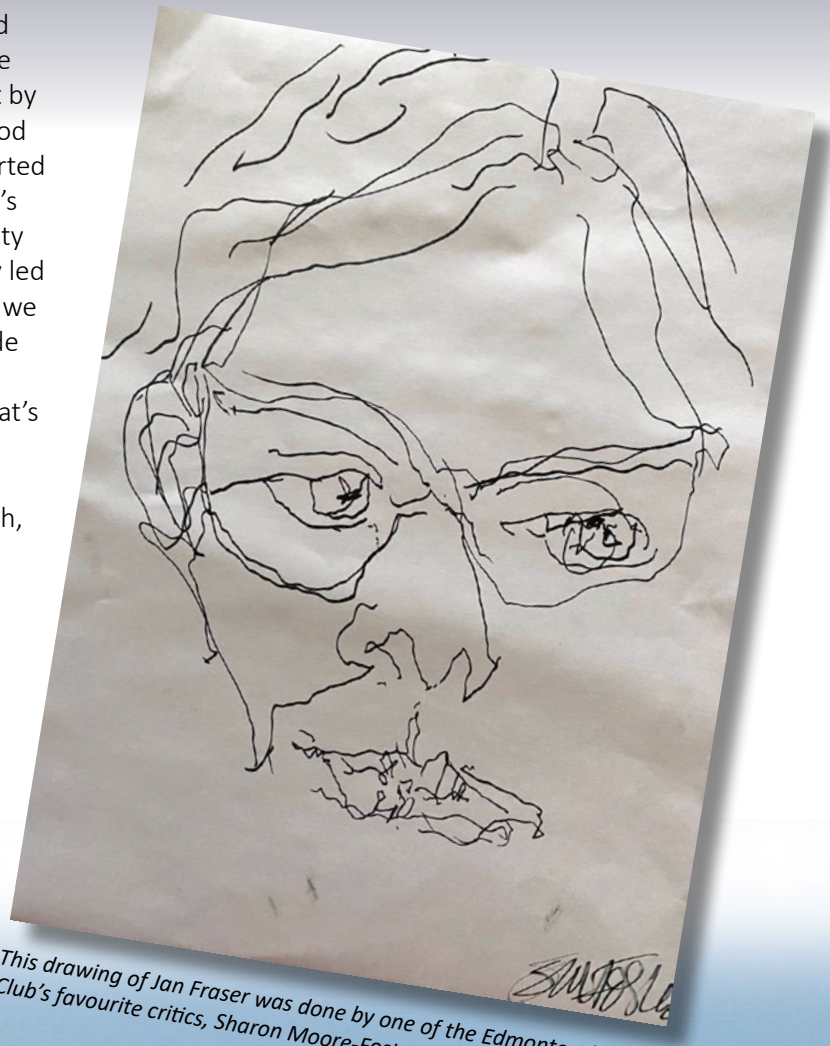
Black Cat Ranch Art Workshop and Retreat

Jan Fraser and Betty Dean were on an art workshop and retreat at the Black Cat Ranch, outside of Hinton, Alberta. The following is an account of the time spent.

THE RETREAT WAS ENERGIZING, inspirational and productive. We arrived Friday late afternoon. There was no meal provided Friday night, just snacks brought by participants. We got to know each other over finger food and wine, then retired to our rooms. Each morning started with a meditation led by Robert Sinclair, one of Alberta's leading artists and former professor at the U of A Faculty of Fine Arts. Then, after a short introduction to the day led by Sharon Moore-Foster and Brenda Kim Christiansen, we were off on our own to paint, draw, wander or sit, inside or outside, while the three of them circulated. They stopped for conversations about our work, or not, if that's what we preferred. We came together when the meal bell rang, at a table reserved for our group. With such interesting participants, conversations were varied, with, of course, many about art.

After one meal, we were led in blind contour drawing (example shown), which expands the ability of the artist to draw what they actually see and not their preconceived idea of what they see. You do this kind of drawing by staring at your subject, not looking at the paper and making your lines continuous, without lifting your pencil from the paper.

We left Sunday after lunch, but could have stayed for another night as many of the participants did. The cost was \$375 for 2 nights, with an extra charge for staying until Monday.



This drawing of Jan Fraser was done by one of the Edmonton Art Club's favourite critics, Sharon Moore-Foster.

Check out the venue at

<http://blackcatquestranch.ca/>

Should we plan an art retreat there for the Edmonton Art Club? Let Jan or Betty know what you think!

Edmonton Art Club

A place for creativity and community

Seraya Smit

Edmonton Art Club

How the oldest art organization in Alberta fosters artistic growth and expression among its members and beyond

The Edmonton Art Club is the oldest continuing art organization in Alberta, formed in 1921 by a group of passionate artists who wanted to share their work and learn from each other.

Today, the club features an eclectic group of visual artists who are disciplined in mixed media application, painting in acrylic, oil, and watercolour, drawing/sketching, ceramic, clay, stone carving, wood carving and wood burning, printmaking, textile and sculpture.

The club is a professional association for visual artists with a mandate to promote the visual arts through exhibitions, special projects and arts advocacy.

It is a Canadian organization, administered by a volunteer executive council of artists, providing a meeting place for artists of all levels, both professional and non-professional. It is an environment of artists gathering to explore creativity.

Friendships are established, information is shared, opinions and ideas are exchanged in a supportive environment.

The club is a leader in the community offering educational opportunities, open studio days, workshops, and demonstrations in all media for its members and non-members. Additionally, a monthly critique of members' artwork by accredited critics is offered.

The Edmonton Art Club knows that its strength lies not only in the words it stands by, but most importantly through the actions of its initiatives. It also understands how important it is for its members to gather in just the right environment, and that is what it strives to provide at the Edmonton Art Club. If you're looking for a place that nurtures your artistic journey, look no further: the club is here and it can't wait to see what you can create.

The club welcomes new members who share its vision and passion for the visual arts.

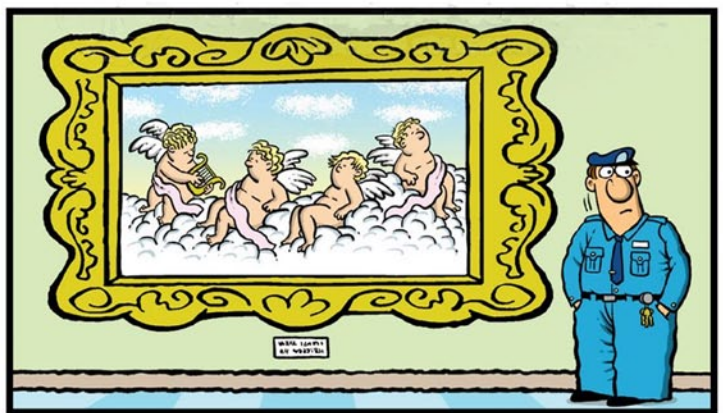
The Edmonton Art Club is more than just an art club. It is a community of artists who support each other, inspire each other, and celebrate each other.

It is a place where you can express yourself, learn new skills, and make new friends. It is a place where you can discover the joy of creativity.

Join the club today and be part of the legacy.



It is my belief that we are the custodians of preserving and safeguarding the historical significance of the Edmonton Art Club. Seraya Smit is president and webdesigner for the Edmonton Art Club.



ARTIST PAINT BRUSH GUIDE

FLAT/WASH

This is my most used brush in my set. Great for filling large areas, blending, and the dry brush technique.



FLAT

The straight edges make this brush a simple choice for buildings, squares, and rectangles. Great for easy evergreen trees and impasto style brush strokes.



FILBERT

Curved bristles are great for flower petals, fur, hair, and creating soft edge blends like clouds. I use this brush often for grass, foliage, and flourishes.



ANGLED

Good for precision painting like hard to reach corners & edges. Can be used for fine lines and details when used on its side. Easily create leaves and impasto style brush strokes with this brush.



ROUND

This is the most versatile brush. Use it for detail work, flourishes and outlines. Great for flowers, filling in areas, lettering and soft blending without edges.



LINER

Use this brush when painting intricate details, accent marks, or any skinny lines. Great for hair, fur, grass, and more.



FAN

The wispy bristles are great for grass, palms, evergreen trees, fur, and feathers. They also make splatter effects, and light highlights easy. Create texture with dry brushing for a weathered look.



THANK YOU!

Thanks to Colours, Delta Art and Drafting Supplies, The Paint Spot, and the Strathcona Art Society for their ongoing support in helping to distribute the EAC newsletters!

And thanks to the following businesses who give generous discounts to EAC members!



11116 - 120 Street NW, Edmonton



West Edmonton Mall
8882, 170th St NW, Edmonton



10032 - 81 Ave NW, Edmonton



10660 - 105 St. NW, Edmonton
7359 - 104 St. NW, Edmonton



10441 123 Street NW, Edmonton



Alberta
Foundation
for the Arts

We're grateful to the Alberta Foundation of the Arts for their continuing support.

As the primary arts resource and grant-funding body in Alberta, the Alberta Foundation for the Arts helps to unleash the potential of every artist through funding, arts promotion, and capacity-building. We provide behind-the-scenes support to artists and arts organizations, giving them the power to inspire minds, encourage expression, foster creativity, and contribute to Alberta's economy. From story time at local libraries to annual festivals on neighbourhood streets, the arts are active in your community. Albertans celebrate and support the arts as artists, volunteers, donors, and attendees at local arts events and activities. Experience, celebrate, and take pride in the arts—they're all around you!

Read more at affta.ab.ca/home.



CARFAC
ALBERTA

Visual Arts Alberta – CARFAC is a Provincial Arts Service Organization funded provincially and municipally that provide a communications hub between members of the visual arts community and the general public. Visual Arts Alberta – CARFAC is the affiliate for the national arts organization Canadian Artists Representation/le Front des artistes canadiens (CARFAC) in the province of Alberta.

CARFAC Alberta Office & Project Space:

3rd Fl., 10215-112 St., Edmonton, AB

Hours: Wednesday to Friday, 10–4pm and Saturday 12–4pm

t 780.421.1731 tf 1.866.421.1731

carfacalberta.com

general@carfacalberta.com

CARFAC Alberta is becoming a Visual Artist Online Resource for your information and perhaps to download, share or simply enjoy with a sip of coffee or tea:

<https://www.carfacalberta.com/becoming-a-visual-artist/>

CALL TO ORDER

Meeting called to order at 7:00 PM by Seraya Smit

Introduction of guests/new members: Rebecca Viezel, Kevin Bigelow, Kim Hickle, Megan Goodwin, Ayden Cameron.

October minutes approval, moved by Jan Fraser and seconded by Jani Galarneau.

PRESIDENT'S REPORT Seraya Smit

Our next meeting is our Christmas celebration in room 333, located on the main entry level.

CRITIQUE TONIGHT

We continue with our tradition in offering our members monthly artwork critiques by accredited critics.

Art criticism is an important facet of the process of creating, sharing, and understanding art. Participating in our monthly critiques is also an important facet of maintaining your active status as a member. Each member is allowed to bring one piece of artwork per meeting for critique. Artwork can be a work-in-progress or a finished piece.

We thank our critic organizer Ada Wong.

Our critic this evening is Randy Hayashi.

WHERE CAN I FIND UPDATES?

All updates can be found on our website including, but not limited to the minutes of our meetings, our monthly newsletter and a calendar of events.

WEBSITE INSIGHT

The website of our art group is an important communication tool that enables us to stay connected with our members and the community. It showcases our artistic works, events, and achievements, as well as provides information and resources for anyone interested in art.

In this report, the following are some statistics about the website's performance and reach for the month of October 2023.

VIEW YOUR STATS CHART

The website had a total of 122 visitors during this period, which is an average of almost 4 visitors per day. The visitors came from 44 cities and countries around the world, indicating a wide and diverse audience for our art group.

The seven countries by number of visitors were:

- Canada
- American Samoa
- Ireland
- United States
- United Kingdom
- Japan
- Portugal

WEBSITE 7 YEAR ANALYSIS

Reviewing the website seven year analysis, the data reveals a consistent upwards growth pattern.

These statistics show that our website is an effective and attractive communication tool that reaches a large and diverse audience. We are proud of our website, and we hope to continue improving it and expanding its content and features. We thank all our members and visitors for their support and interest in our art group.

The overview for the six-month period from January 1 to June 30, 2023 including your individual artist page statistics are located on the website as well as the display tables to your right.

WHAT IS THE FIVE AND FIVE?

Members who have attended five general meetings and who have submitted five paintings for critique in the twelve months prior to the show are eligible to participate in the Edmonton Art Club exhibits and shows.

Additionally, the club hosts a number of annual Open Shows available to all members, irrespective of the five and five rule. New members are exempt and encouraged to participate in these events.

For additional information with respect to the Five and Five, please visit our website, alternatively, this information is located today on the display tables to your right.

THE POWER OF VOLUNTEERING AND MAKING A DIFFERENCE

We are in the midst of our big push to secure a volunteer base and will continue through the month of November.

The emphasis is on the upcoming shift in executive leadership as well as other committees with the focus mainly on the executive leadership.

In January I will transition into the role of Past President and lead our Mentorship program.

Jani will become President.

While December's meeting is a social event, our Annual General Meeting in January will officially introduce the new leadership roles.

There's a volunteer sign up sheet circulating. Please indicate in which role you wish to volunteer in. Our specific needs are as follows:

- One of the most important roles within the Edmonton Art Club is Treasurer. The role of Treasurer is key and essential to the success of the club, as it involves overseeing the club's financial operations, planning, and monitoring the club's income and expenses, ensuring the

MEETING MINUTES *(continued)*

club meets its tax and legal obligations, and providing accurate and timely financial information to the club's members and executive committee. This is a demanding role that requires full attention, so it would be better if the treasurer does not have other club responsibilities.

- Ada Wong is leaving her role as critic organizer after many years of service. This is a vital role that supports our membership policies and mandates.
- We need more people for the Exhibits/Shows committee. This is a demanding role that requires full attention, so it would be better if these committee members do not have other club responsibilities. At present, only Jani and I are handling this role, and we are struggling to find enough time to fulfill the committee's goals given the many other committees we oversee and manage.
- We are looking for dedicated contributors/writers to join our newsletter team.
- Orange Hub Committee, you will be responsible for securing the room rental for monthly meetings and other events at the Orange Hub via the City of Edmonton portal.
- We have no one in the Publicity committee. This role has been empty for several years.
- Social committee is looking for any members who are interested in assisting with special events.
- Social Convener are the members who make and serve the coffee during our meetings. You may have noticed we do not have coffee service this evening. We no longer have anyone occupying this role. Please consider this an immediate volunteering role. We'd like to secure someone tonight.
- Webmaster in Training is a key and essential role. I have been managing the website since early 2015 and I want to pass on the responsibility to someone else. This can be done slowly or with a team, as long as there is a clear leader.
- We need more people for the Workshop committee. This is a vital role that helps the club organize and deliver workshops that improve the artistic abilities and knowledge of our members, foster a sense of community and cooperation among them, and promote the club's vision and achievements to the wider audience. This is a demanding role that requires full attention, so it would be better if these committee members do not have other club responsibilities. Right now, only Jani and I are handling this role, and we are finding it hard to manage enough time to accomplish the committee's goals given the many other committees we oversee and manage.

MAKE A DIFFERENCE

We appreciate that our Past President, Rhea Jansen has entered her "power mode" and many of you have already collaborated with her.

Please don't hesitate to contact Rhea if you want to be part of the club's trajectory to success.

VICE PRESIDENT'S REPORT Jani Galarneau ON THE HORIZON

The Golden Products DEMO we hosted on Wednesday, November 1, 2023, was a huge success

- 32 artists participated in a well organized and informative presentation delivered by Samantha Williams Chapelsky.
- Congratulations to all those who attended.
- Participants left with a wealth of knowledge as well as a handsome swag bag.

OUR DECEMBER MEETING

This will be a festive occasion with food, music, prizes and more.

- Merriment and holiday cheer is the theme.
- You will receive an invitation by the end of November. You can choose what food or beverage item you want to bring in the invitation.
- Please also bring a hand-made artwork item for the gift exchange (no larger than 6 x 6).

NEW MEMBERS SHOW

This is an informal exhibit accompanying our December Christmas Celebration.

- New Members will have an opportunity to showcase their artwork.
- Participants are not expected to make a formal presentation to the group, rather, this is an opportunity to showcase their artwork with the bonus of engagement throughout the evening.
- New members can present up to five pieces of their artwork for exhibit during our December meeting.
- Grids and/or easels or optional artwork labels are the sole responsibility of the exhibitor and are to be set up around the perimeter of the room.
- Arrive at the venue at 6 p.m. to set up, the room (#333, located on the main entry level) should be ready to go before the arrival of the first guest at 6:30 p.m

EAC JURIED SHOW

This coming show will be entitled "The Long and Short of it!". Three to five pieces of artwork per artist. (3 pieces if

MEETING MINUTES *(continued)*

juried, 5 pieces if not juried) Five and five as well as Juried Show guidelines apply.

- The unifying theme is “odd sized canvas”, with a restriction size of not larger than 12 x 24.

- The event is to be hosted at the Night of Artists venue tentatively during the Spring of 2024.

ENCAUSTIC WORKSHOP

With SWCA in February or March 2024.

MISERICORDIA SHOW

Scheduled for September 6, 2024 – January 5, 2025

TREASURER’S REPORT Penny Lamnek

Account balance as of September, 2023

Balance forward:	\$ 7,621.42
Withdrawals:	\$ 287.13
Deposits:	\$ 1,225.00
Closing balance	\$8,559.29

Penny Lamnek moved acceptance of the report, seconded by Betty Dean.

NEWSLETTER Rob Guetre

Deadline is the 23rd of November. More articles and pictures would be greatly appreciated.

OTHER BUSINESS

Please visit the display tables located on your right for handouts and additional information.

Number of members: 21

Number of guests: 5

Number of artworks: 14

Adjourning of meeting at 7:22 PM moved by Donna Chamberland and seconded by Rhea Jansen.

Critic: Randy Hayashi

Thanked by: Ada Wong

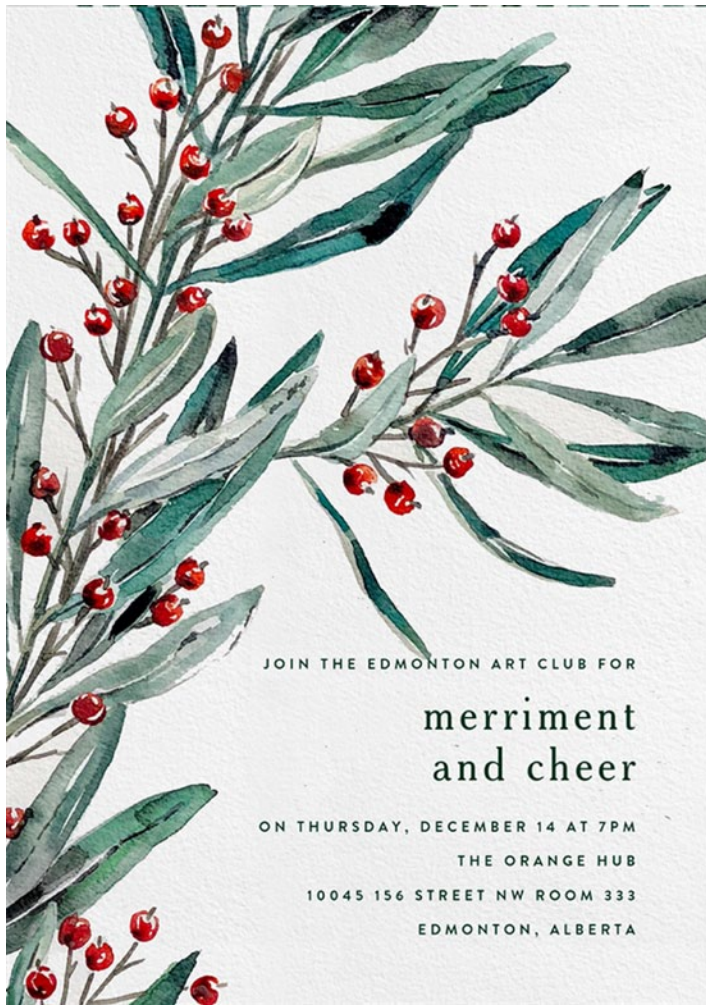
Gofers: Yvonne Bilan Wallace and Nola Bukvi

Our Next Meeting

**December 14, 2023
in Room 440**

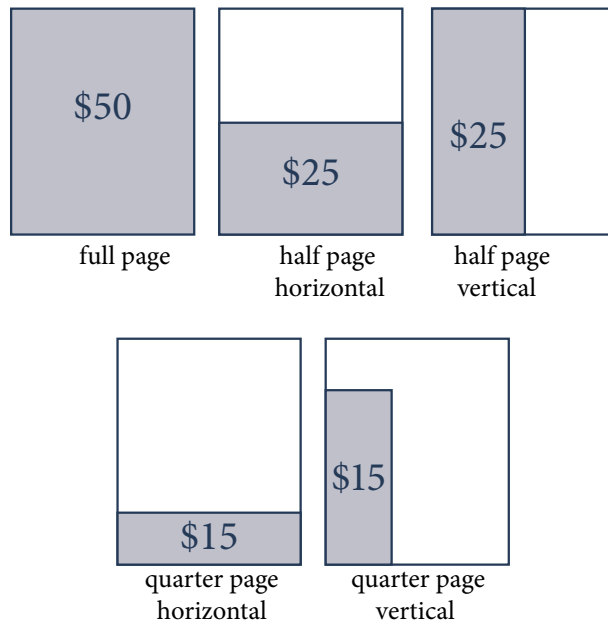
On the Horizon

- Our next EAC Juried Show is entitled “The Long and Short of it!”. Up to 5 pieces of artwork per artist. Five and five as well as Juried Show guidelines apply.
 - The unifying theme is “odd sized canvas”, with a restriction size of not larger than 12x24.
 - The event to be hosted at the Night of Artist venue tentatively Spring 2024.
- Encaustic workshop with SWCA in February or March 2024.
- Misericordia is scheduled for September 6, 2024 - January 5, 2025



A NOTE TO MEMBERS REGARDING ADVERTISING IN YOUR NEWSLETTER...

In order to help cover the circulation costs for our newsletter, paid advertising relevant to any artistic activities is being sought from artist groups, suppliers, and non-members. Rates on a per insertion basis are indicated in the page templates (pictured below). Please refer to these for sizes and shapes relative to the printed area of a newsletter page.



Where Can I Find Updates I Missed?

- Minutes of our meetings are published on the website in the Members Only section, as well as published MONTHLY in our members only version of our newsletter.



Important Notice Regarding Liability and Insurance

As per EAC Policies:

- As a condition of entering the show, participants agree that the EAC will not be held liable for damage, loss or theft of their artwork.
- Participants shall be responsible for obtaining adequate insurance coverage for their art work.

Insurance purchased for EAC is liability only, and does not cover personal items or art work.

Edmonton Art Club Executive and Other Committees 2021

POSITION	NAME	CONTACT INFORMATION		
EXECUTIVE COMMITTEE MEMBERS				
President	Seraya Smit	serayasmit@hotmail.com	780 953-8919	
Vice President	Jani Galarneau	jgalarneau@live.ca	780 994-9210	
Past President	Rhea Jansen	rheajansen@shaw.ca	780 242-6153	
Treasurer	Penny Lamnek	hans.lamnek@outlook.com	780 689-2410	
Correspondence Secretary	Diana Panizzon	panizzon@telus.net	780 453-2022	
Recording Secretary	Michaela Yanish	michaela@raffertys.ca	780 990-2572	
OTHER COMMITTEE MEMBERS				
Critic Organizer	Ada Wong	artsinabox@gmail.com	780 434-3642	
Critique Writer	Jenny Rodrigue	jenita8237@gmail.com	587 879-5367	
Critique Photographer	Jenny Rodrigue	jenita8237@gmail.com	587 879-5367	
back up	Yvonne Bilan-Wallace	wallaces_4@shaw.ca	780 964-7346	
Exhibits/Shows Committee	Seraya Smit	serayasmit@hotmail.com	780 953-8919	
	Jani Galarneau	jgalarneau@live.ca	780 994-9210	
	<i>VACANT</i>			
	<i>VACANT</i>			
Grants Coordinator	Betty Dean	marydean@telus.net	780 466-9152	
Grants Committee	Nola Bukvi	nbukvi@shaw.ca	780 444-0927	
	Andrew Bedingfield	bedingfield@email.com	780 901-2431	
	Donna Chamberland	donnachamberland@shaw.ca	780 250-7414	
Historian	Johanne Septou	rseptou@telus.net	780 437-2504	
Librarian	Barb Stachow	bstachow@telus.net	780 457-2356	
Membership Committee	Mary Frances Fitzgerald	maryfrances.fitzgerald@gmail.com	780 554-8802	
	Marge Somkuti	somkutimarge@hotmail.com	780 953-3260	
	<i>official greeter</i>	Jan Fraser	janfraserart@gmail.com	780 435-7525
	<i>official greeter</i>	Yvonne Bilan-Wallace	wallaces_4@shaw.ca	780-964-7346
Newsletter Producer/Editor	Rob Guetre	rsguetre@gmail.com	780 468-4009	
Newsletter Contributors	Betty Dean	marydean@telus.net	780 466-9152	
	Mary Frances Fitzgerald	maryfrances.fitzgerald@gmail.com	780 554-8802	
	Johanne Septou	rseptou@telus.net	780 437-2504	
	Franchesca Songco	songcoflee@gmail.com	780 932-4857	
Newsletter Advertising	Marge Somkuti	somkutimarge@hotmail.com	780 953-3260	
Orange Hub Committee	Jani Galarneau	jgalarneau@live.ca	780 994-9210	
	Seraya Smit	serayasmit@hotmail.com	780 953-8919	
	<i>VACANT</i>			
Publicity	<i>VACANT</i>			
Receipts	Barb Stachow	bstachow@telus.net	780 457-2356	

Edmonton Art Club Executive and Other Committees 2021 continued

POSITION	NAME	CONTACT INFORMATION	
OTHER COMMITTEE MEMBERS			
Scholarships Committee	Jani Galarneau	jgalarneau@live.ca	780 994-9210
	Rob Guetre	rsguetre@gmail.com	780-991-8756
<i>administrator</i>	Rhea Jansen	rheajansen@shaw.ca	780 242-6153
	Seraya Smit	serayasmit@hotmail.com	780 953-8919
	Jani Galarneau	jgalarneau@live.ca	780 994-9210
	Michaela Yanish	michaela@raffertys.ca	780 990-2572
Social Committee	Rhea Jansen	rheajansen@shaw.ca	780 242-6153
	Penny Lamnek	hans.lamnek@outlook.com	780 689-2410
	<i>VACANT</i>		
	<i>VACANT</i>		
Social Convener	Lorie Meyer	lorie.meyer80@gmail.com	825 777-2279
	Michaela Yanish	michaela@raffertys.ca	780 990-2572
	Barb Stachow	bstachow@telus.net	780 457-2356
Social Media	<i>moderator</i>	Mary Frances Fitzgerald	maryfrances.fitzgerald@gmail.com
	<i>moderator</i>	Franchesca Songco	songcoflee@gmail.com
	<i>administrator</i>	Seraya Smit	serayasmit@hotmail.com
Webmaster		Seraya Smit	serayasmit@hotmail.com
	<i>training</i>	<i>VACANT</i>	
Workshops Committee		Seraya Smit	serayasmit@hotmail.com
		<i>VACANT</i>	
		<i>VACANT</i>	
	<i>administrator</i>	Jani Galarneau	jgalarneau@live.ca
			780 994-9210

Looking for
volunteers!

