

The Changing Picture

65 Years of the Edmonton Art Club



The Changing Picture
65 Years of the Edmonton Art Club



Edmonton Art Club

Contents

Lenders to the Exhibition

The Edmonton Art Gallery is grateful
to the following lenders of paintings:

Alberta Art Foundation

Mrs. Alvira Boettcher

Mrs. Gwen Hughes

Mr. Sylvain Voyer

Sponsors of the Exhibition

Dr. E. Silver Keeping

Alberta Art Foundation

Acknowledgements 3

Foreword 3

Pioneers in the Art Community:
Edmonton Art Club 1921-1935 4

Historical Highlights of the Edmonton Art Club
1936-1987 9

The Future of the Club 12

Edmonton Art Club
Sixty-fifth Anniversary Exhibition

Works of Past Members 12

Colour Plates 14

Edmonton Art Club
Membership List 1921-1987

Former Members 25

Active Members 27

Cover Image:

J. Gordon Sinclair

TAWATINAW CREEK COUNTRY, n.d.

oil on masonite

61 x 76.2 cm

Courtesy of Mrs. Gwen Hughes

Photographed by Lauren Dale

Back Cover:

George B. Brown

THE EDMONTON ART CLUB (PLAQUE) c. 1927

copper

46.5 x 34.5 cm

Courtesy of the Edmonton Art Club

Photographed by Harry Korol

Acknowledgements

The Edmonton Art Club is grateful for the generous grant from the Alberta Art Foundation which made publication of this catalogue possible.

Deep felt thanks are extended to The Edmonton Art Gallery staff for the extra help and support received with the production of the catalogue and the hanging of the exhibition for this special celebration. Thanks are also given to Director Terry Fenton and to Kate Davis, now in Calgary. Special thanks to Gerald J. Gongos, Communications Manager, who gave us such expert advice, supervised, and along with Stacey Bertles, edited this publication. We appreciate the efforts of Russell Bingham, the curator of our twofold exhibition—historical and present-day.

An important part of the catalogue are the historical essays derived from articles written by art historian Joan Greer. She is knowledgeable in the art history of Alberta and understanding of the Edmonton Art Club.

The history of the Edmonton Art Club could not have been written if Rosemary Rees, club historian hadn't kept such careful records. This labour of love was started by J. Gordon Sinclair and continued and perfected by Rosemary. She and Dorothy Shute, another very valuable member of the Club, have written the "look into the future" section of the catalogue. Dorothy has provided the Club with a newsletter for many years as well as with members' lists and exhibition catalogues representing countless hours of freely given time and effort.

The Edmonton Art Club would also like to give a very special thank you to Helene M.E. Schalkwyk and Alvira Boettcher. Without their courage and dedication this publication would not have been possible.

Last but not least, thanks go to past and present members who joyfully gave information and encouragement when needed. We hope that many past members will join us in celebration and enjoy the historical catalogue. This venture was undertaken to honour our past members, pioneers in the art community.

Joanna Moore
President, Edmonton Art Club

Foreword

The Edmonton Art Gallery's association with the Edmonton Art Club has been a long and fruitful one. As Joan Greer points out in her introduction to this 65th Anniversary of the organization, the Club is older than The EAG and was, in fact, present at its birth.

A long partnership such as this stems from shared ideals. Both the Edmonton Art Club and The EAG have been dedicated, since their inception, to the improvement of art and the art of appreciation in this city.

The two organizations have maintained an active, intimate, and unique association over the years. The Club continues to meet regularly at the gallery and continues to mount an Annual Exhibition. A past president sits on The EAG's Board of Directors as a valuable working member. EAG curators often provide criticism at club meetings and select works for the annual exhibition.

We trust this partnership will continue and we thank the past and present members of the Edmonton Art Club for their invaluable friendship over more than half a century.

Terry Fenton
Director
The Edmonton Art Gallery

Pioneers in the Art Community: Edmonton Art Club 1921-1935

For 65 years the Edmonton Art Club has encouraged artistic achievement and an appreciation of the visual arts.¹ It is the oldest continuing art organization in Alberta, and its involvement in the Edmonton art scene is evident today in its regular exhibitions and numerous activities. However, the importance of this organization's contributions in Edmonton's early years is less recognized.

The Edmonton Art Club was formed in 1921 by a group of artists who wanted to develop the visual arts in the city in three ways: to encourage a wider appreciation of fine arts in the community; to improve the quality of local art; and to encourage individual artists through constructive criticism and exhibitions.²

In 1913, Professor James Adam organized what was perhaps the first exhibition of art in Edmonton.³ Sixty works, including paintings by the Ontario Society of Artists and a number of British paintings, were shown at the summer fair.⁴ Other exhibitions followed. In 1921, Professor Adam and the Women's University Club organized two exhibitions of paintings which included works by members of the Group of Seven.⁵

By this time, the art scene in Edmonton was well underway. The first art association was organized in November of 1914 by a group of teachers and R.W. Hedley, Art Supervisor for the Public School Board.⁶ Hedley became president and J. Gordon Sinclair was secretary. Calling itself the Edmonton Art Association, it offered classes and lectures on art and art history. One of its main purposes was to combat the prevalent wartime attitude that art was an expendable "frill."⁷

The Association offered a course in art instruction at Alex Taylor school in 1914. It was well-attended by teachers and other interested people. A similar course was offered the following year when the Association also held its first exhibition under the auspices of the Edmonton Public School Board. It included the work of school children, paintings by local artists, and prints from the United States.

The MacKay Avenue school hosted other exhibitions which, by 1918, had expanded to display works from the Canadian National Gallery, and of future Art Club members William Johnstone and Florence Mortimer. The Art Association's last and perhaps most notable exhibition was held in 1921. It was the second exhibition organized by Professor Adam and included paintings by the Group of Seven and woodblock prints by W.J. Philips.

Although the city had developed an art organization which encouraged education and exhibitions, the art scene was still in its beginning stages in 1921. Artistic activities were being initiated on a very modest scale.

Among those who were involved at the inception of the Edmonton Art Club were members of the Edmonton Art Association. They were artists concerned with carrying on the Association's aim of stressing "the importance of art in everyday life."⁸

The first meeting was held October 6, 1921, in the studio of Edmonton's only professional artist, William Johnstone. The jury which chose the Club's charter members was composed of Miss Nellie Brown, Mr. E. De Hart, Dr. R.B. Wells, Mr. J.A. Adamson and Professor James Adam. They selected 14 charter members: Miss Bérangère Mercier, Miss Justine Springer (later Mrs. Rice), Miss Theo Adamson, Mr. James Gillies, Mr. William Johnstone (president) Mr. Robert Campbell, Mr. J. Gordon Sinclair, Mr. C. Lionel Gibbs, Professor W. Arthur Adam, Mr. William M. Kitchener (vice-president), Mr. Fred M. Kitchener, Dr. H. E. Bulyea, Mr. A.C. Macauley and Mr. J. Davenall Turner.⁹

The Club's early efforts focused on organization, recruitment, and critical evaluations of each other's work. Meetings were held monthly and the Club held annual exhibitions. Its constitution stated that membership was to be confined to "duly qualified artists who were producing original works in oil, watercolour, pastel, black-and-white, etching, engraving, or sculpture." To gain admission, artists had to submit works to the executive or a committee appointed by the executive.

In 1923, it was decided that artists who did not meet the Club's standards could be granted associate memberships and promoted to full membership as the quality of their art progressed. Non-resident artists were also admitted, providing they sent two works for criticism every six months. This arrangement provided rural artists with an important connection to others involved in the visual arts.

Concerned with attracting as many competent artists to its membership as possible, the Club discussed the possibility of expanding to include the whole province in 1921 and again in 1924. It was suggested that the name be changed to the Alberta Society of Artists to attract other artists. The suggestion was not acted upon.

The Club focused mainly on improving the art they produced, and monthly meetings were centered on discussion of works submitted. Usually, two members were appointed to criticize at each meeting, although for a brief period members gave written evaluations of works. Later, the Club began inviting artists from outside the city to be "guest critics."

Exhibitions were another important Club undertaking. An annual exhibition of member's art was held

each spring. The first was held in the Board of Trade Rooms in the MacLeod Building from April 12 to 15, 1922. Mayor Duggan officiated at the opening, and newspaper reviews were generally positive. One critic did point out that:

"A great deal of criticism by the members of their work will be necessary before a certain element of crudity is eliminated."¹⁰

The critic also commented upon the predominance of western landscape as subject matter. Most of these landscapes concentrated on the areas close to or in the city. The Rocky Mountains were also popular. A few landscapes of European scenes, portraits, still-lives, and designs for pottery rounded out the show and a total of 19 artists were represented. These early exhibitions do not seem to have been juried. A number of years later, however, Club members appointed a committee to choose works for each exhibition.

Newspaper reviews consistently remarked upon the improvement of the quality of each succeeding exhibition. Landscapes were still predominant, but the range of exhibitors expanded. The artistic interchange between Alberta's two largest cities began as early as 1923, when two members of the Calgary Art Club exhibited in the Edmonton Art Club annual exhibition. That show was opened by Lieutenant Governor Brett.

As the Edmonton Art Club became more established, it introduced more activities. Exhibitions were held in several locations throughout the city, widening the audience for Club members' work. In late April 1922, for example, their work was displayed in the First Presbyterian Church in Edmonton. By 1924 the Edmonton Museum of Art was established, and the Art Club contributed works to the first exhibition. (This association between the Club and the Museum was to continue on a regular basis.) The Club also exhibited in local stores, the Edmonton Normal School, and the Edmonton Exhibition summer fairs. Shows also travelled outside the city. In 1928, 75 Art Club works were displayed in Calgary under the auspices of the Calgary Women's Arts and Crafts Club.¹¹ This was possibly the first such outside exhibition.

In the early 1930's, members began holding "sketching picnics." These outings provided an opportunity for them to exchange ideas, observe each other painting or sketching, and offer comments and advice in a relaxed setting. These picnics both reflected and encouraged the existing interest in landscape painting.

A lecture series, organized by the Club, exposed members to new ideas and provided an educational outlet for non-artists as well. A new membership category had been created for non-artists in 1924. Called an "Auxiliary Membership," it was available to anyone in



Frederick Marshall Kitchener, charter member.

Alberta who was interested in the progress and development of art. Although this membership was discontinued after one year due to poor support, the auxiliary activities to encourage membership were important to the Club's development.

Lectures series dealt with a range of topics. One lecture, presented by Reverend McCartney Wilson, examined Impressionism, Post-Impressionism, Futurism, Cubism, Vorticism, and other "extreme styles" of modern painting. The lecture's title and accompanying newspaper review suggest that these art movements were not taken altogether seriously. Some were dismissed entirely. The speaker's concluding remarks were reported:

"'The terrible experiments,' as Dr. Wilson named them, will not live except to assure us that there is no road that way along which art may develop and the present tendency is to return to a more even balance of 'things as they are and the emotions they create.'"¹²

Reverend McCartney Wilson's conservative ideas may have been indicative of the attitudes held by many Albertans in the '20s. The Club minutes did not record any challenges to his statements. In fact, the lecture

Footnotes

1. In my research on the Edmonton Art Club I have been assisted by a number of people. I would like first to thank Dr. Sybesma Ironside whose instruction and encouragement has assisted me immeasurably in my research into the early history of Edmonton art. I would also like to thank the Edmonton Art Club member and project organizer Mrs. Helene M.E. Schalkwyk, whose enthusiasm and energy has been unfailing, and with whom it has been a pleasure to work. Also deserving of credit are Club historian Mrs. Rosemary Rees, as her carefully kept archives have greatly facilitated art historical research into the Club's history, and Mr. Gerald J. Gongos of The Edmonton Art Gallery for his assistance in choosing photographs for this work. I am also grateful to Dr. Diana Shklanka and Mrs. Frances Klinge for reading this account and offering valuable suggestions.
2. Edmonton Art Club minutes.
3. See Mrs. D. Bowman, "First Exhibition of Pictures at Summer Fair Fourteen Years Ago Grown into a Permanent Art Museum", *Edmonton Journal*, June 30, 1927, p.31.
4. "Love of Fine Art is Shown in Art Gallery at the Exhibition", *Edmonton Bulletin*, Aug. 13, 1913, p.5. See also "Art Exhibition at Edmonton Fair is Best Collection in the 'West,'" *Edmonton Journal*, Aug. 13, 1913, p.6.
5. "Group of Seven Newest Movement in Canadian Art", *Edmonton Bulletin*, March 4, 1921, p. 4; and "Art Exhibition Opens Today in MacKay Avenue School — Large Number of Exhibitors", *Edmonton Bulletin*, March 28, 1921, p.4.
6. Mrs. D. Bowman "First Exhibition...", *Edmonton Journal*, June 30, 1927, p.31.
7. Notes on Edmonton Art Club History and related issues, by J. Gordon Sinclair. From Edmonton Art Club Archives.
8. Notes on Edmonton Art Club History by J. Gordon Sinclair. It would appear that the Art Association was phased out at this time — at least to a large degree — for it was no longer felt to be necessary after the formation of the Edmonton Art Club.
9. Club minutes and notes by J. Gordon Sinclair.
10. "Art Club's First Exhibition, A Very Promising Beginning", *Edmonton Journal*, April 13, 1922, p. 11.
11. After this the Club received other opportunities to exhibit its work in Calgary.
12. Club minutes.
13. Karen Wilkin, *Painting in Alberta: An Historical Survey*, Edmonton: Edmonton Art Gallery, 1980, pages unnumbered.
14. Club minutes.
15. For a complete analysis of the influence of the Group of Seven on Alberta painting between 1920 - 1960, see Frances Klinge, *Under the Chinook Arch: the influence of the Group of Seven on Alberta Landscape Painting Between 1920 and 1960*, M.A. thesis, University of Alberta, 1985.
16. Further research into early Edmonton artists and particularly into their individual artistic concerns will lead to a clearer picture of art in Edmonton at this time.
17. The status of this organization at this point is not clear. It seems to have been largely absorbed by the Edmonton Art Club in 1921. Here it is perhaps past members of what had been the Association who were involved in founding the Edmonton Museum of Art.
18. According to archival materials in The Edmonton Art Gallery, Constable's visit had been organized by the Canadian National Gallery, the Carnegie Trust, the University of Alberta and the Edmonton Museum of Art.

Historical Highlights of the Edmonton Art Club 1936 - 1987

By the year 1936, the Edmonton Art Club had proved its commitment to developing a healthy visual arts community in Edmonton. Only 15 years old, the Club had accomplished much. It was providing the city with regular exhibitions, public lectures and art classes. Members were involved in founding the Edmonton Museum of Art (1923) and the Alberta Society of Artists (1931). In fact, co-operation with other individuals and organizations emerges as an important pattern in the Club's history.

The connection between the Club and The Edmonton Art Gallery which began with the formation of the Edmonton Museum of Art in 1923 has continued to be a fruitful one. The gallery has provided the Club with the opportunity to view art, as well with a meeting and exhibition space. In turn, the Club has provided The Edmonton Art Gallery with support and encouragement in numerous ways. These include financial and artistic donations and active involvement in gallery administration and activities. The second and third Edmonton Art Gallery directors, Dr. R.W. Hedley (1943-1950) and Mr. P.H. Henson (1950 - 1961) were Club members, as were many individuals who taught art classes at the gallery.

Hedley is part of the historical link between the art programme at the University of Alberta (now the Department of Art and Design) and the Edmonton Art Club. In a Museum report of November 1943, Hedley addressed the idea of establishing a Fine Arts programme at the U. of A. He believed it was an important goal which would benefit Western Canada.¹ That year many Art Club members participated in a university summer school course offered by H.G. Glyde and W.J. Philips,² but it was not until 1946 that Glyde moved from Calgary to begin the visual arts programme at the University of Alberta.³

A year later, in 1947, Glyde was joined by another important artist, J.B. Taylor (1917 - 1970). Taylor joined the Edmonton Art Club in 1948 and became an extremely important member. He was one of the Edmonton Art Club members who was professionally trained, having spent two years prior to World War II studying at the Art Students League in New York. After serving in the R.C.A.F., he completed his training at the Ontario College of Art.⁴

Taylor was respected for his paintings, many of which were landscapes, as well as for his contributions as an art instructor. He taught at the University of Alberta and at the Banff School of Fine Arts and in rural areas of Alberta. His interest in the arts throughout the province was further attested to by his membership in the A.S.A.



J. Gordon Sinclair at The EAG.

The Edmonton Art Club has a long tradition of encouraging art education at all levels. In 1945, for example, the Club offered three prizes to art students. Five years later it initiated the Hilda Mitchell Memorial Scholarship. This fund could be used toward study at the Alberta Museum of Art, the Banff School's summer programme, or the University of Alberta.⁵ Many Club members taught art classes. Two early members whose contributions are notable are Florence Mortimer (1885-1959) and Murray MacDonald (b. 1898). These two are representative of the extreme energy and dedication of Edmonton art pioneers.

Florence Mortimer was born in South Africa and received her art training in Bath, England.⁶ She came to Canada when she was 23. Her art was first exhibited in 1918, ten years after she settled in Peace River.⁷ She became Edmonton's first art instructor after moving to the city in 1926.⁸ Mortimer's contributions were very important in the following decades: she was not only an art teacher; she was also a member of the Edmonton Art Club and the Alberta Society of Artists. She remained an active artist into the 1940s and 1950s.

Murray MacDonald (b. 1898) is another important art educator. Originally from Nova Scotia, he was largely self-taught. His art-related activities in Edmonton began in the 1920s and he is still active today.

Examples of his contributions to the arts indicate the scope of his activities. MacDonald has been a member of the Edmonton Art Club since 1929; he has also served as Club president and was a member of the Alberta Society of Artists. His involvement with the Edmonton Museum of Art, where he lectured and taught art classes, was extensive.⁹

The Future of the Club

Our club can be called a learning club. We learn from each other, as well as from invited critics at our meetings. Critiques of members' works teach us about composition, color, and even framing.

More and more opportunities are opening up for members to show and sell their work. Immediate past members include Esther Freeman who does portraits in oils and pastels and teaches, Sidi Schaffer who last year had a large showing at Oppershauser House in Stony Plain and teaches; Russell J. Hogger and Jerry Heine who both excel in watercolour and Vivian Thierfelder, who is well known for her large, luscious paintings of flowers.

The show hanging in the gallery during the Club's 65th Anniversary demonstrates that the Club is as ambitious as ever. Last year at our Spring Show we were able to exhibit a sculpture by Donna Shymko (Marchyshyn).

As a service to the public, the Club exhibits paintings at the ACT Centre in Rundle Park, Youville Palliative Care Centre at the Edmonton General Hospital, Ronald McDonald House and City Hall.

A look into our crystal ball shows promise for the future of the Edmonton Art Club. We are fortunate in having more young members joining the Club. They bring fresh ideas as well as a will to work and make the Club a success. The number of active members remains about 50 from year to year.

*Dorothy Shute
Rosemary Rees*

Edmonton Art Club Sixty-fifth Anniversary Exhibition Works of Past Members

Dorothy Barnhouse

GOLDEN WINDOW (Newfoundland Village), c. 1940

oil on paper

40 x 48 cm

Collection of the Alberta Art Foundation

George B. Brown

THE EDMONTON ART CLUB (PLAQUE) c. 1927

copper

46.5 x 34.5 cm

Courtesy of the Edmonton Art Club

Dr. Harry E. Bulyea

PORTRAIT OF A WOMAN, n.d.

oil on canvas

52.1 x 39.4 cm

Gift of the artist, collection of
The Edmonton Art Gallery

Robert Campbell

AFTERNOON ON ROXY NEAR BANFF, 1947

watercolour on paper

13.7 x 19 cm

Collection of The Edmonton Art Gallery

Alban Cartmell

PRAIRIE TRAILS, 1925

oil on canvas

55.3 x 71.4 cm

Collection of The Edmonton Art Gallery

Alice M. Daley

UNTITLED, n.d.

oil on canvas

43.2 x 50.3 cm

Collection of the Alberta Art Foundation

Gertrude V. Fleming

FULL BLOOM, 1934

watercolour

28.3 x 38.5 cm

Collection of the Alberta Art Foundation

Hilda Vincent Foster

BIRDS AND FLOWERS, n.d.

watercolour

35.2 x 35.2 cm (image)

Courtesy of Alvira Boettcher

Percy H. Henson
UNTITLED, n.d.
lithograph
16.1 x 20.2 cm (image)
19.2 x 23.1 cm (sheet)
Collection of the Alberta Art Foundation

Barbara Roe Hicklin
MISTY VALLEY, 1960
watercolour on paper
67.3 x 103.5 cm
Collection of the Alberta Art Foundation

Matt Lindstrom
UNTITLED LANDSCAPE, n.d.
oil on canvas
40.7 x 50.8 cm
Collection of The Edmonton Art Gallery

Murray W. MacDonald
GLACIER, 1957
watercolour on paper
48 x 66 cm (image)
51 x 68.4 cm (sheet)
Collection of the Alberta Art Foundation

Kay Mais
MISSAL FARM, 1974
watercolour on paper
35.5 x 50.1 (image)
37.8 x 53.6 cm (sheet)
Collection of the Alberta Art Foundation

Thelma Manarey
INDIAN BOY, 1954
oil on canvas
38.2 x 30.5 cm
Collection of the Alberta Art Foundation

Bérangère Mercier
HOODOOS, c. 1970
oil on board
50.8 x 40.6 cm
Collection of Sylvain Voyer

Mary D. Parris
LANDSCAPE, n.d.
watercolour
46.4 x 61.6 cm (image)
48.3 x 63.5 cm (sheet)
Collection of the Alberta Art Foundation

Lewellyn Petley-Jones
THE ANGLERS, 1948
oil on canvas
72.8 x 91.3 cm
Collection of The Edmonton Art Gallery

J. Gordon Sinclair
TAWATINAW CREEK COUNTRY, n.d.
oil on masonite
61 x 76.2 cm
Courtesy of Mrs. Gwen Hughes

Jack B. Taylor
LANDSCAPE, 1963
oil on canvas
71.1 x 86.4 cm
Collection of The Edmonton Art Gallery

J. Davenall Turner
EDMONTON, PARLIAMENT BUILDINGS, 1936
oil on canvas board
23 x 30.4 cm
Collection of the Alberta Art Foundation

Ella May Walker
LAUDER'S HOUSE (The First Bakery) n.d.
watercolour
38 x 53.5 cm
Collection of the City of Edmonton Archives

George Weber
HOODOOS, DRUMHELLER, ALBERTA, 1960
silkscreen 16/26
32.2 x 40.5 cm (image)
37.5 x 44.5 cm (sheet)
Collection of the Alberta Art Foundation

This exhibition was made possible through the
generous support of Dr. E. Silver Keeping.

Dorothy Barnhouse



GOLDEN WINDOW
(Newfoundland Village), c. 1940
oil on paper
40 x 48 cm
Collection of the Alberta Art Foundation

Robert Campbell



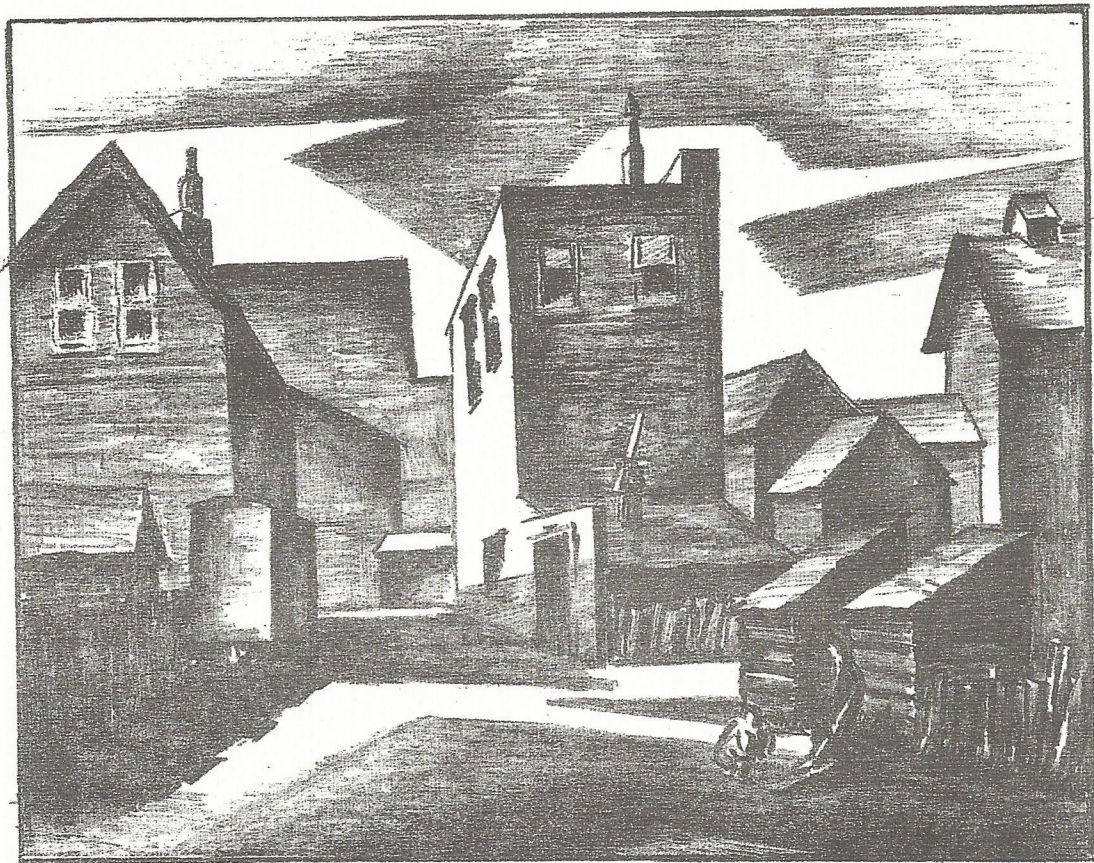
AFTERNOON ON ROXY NEAR BANFF, 1947
watercolour on paper
13.7 x 19 cm
Collection of The Edmonton Art Gallery

Alban Cartmell



PRAIRIE TRAILS, 1925
oil on canvas
55.3 x 71.4 cm
Collection of The Edmonton Art Gallery

Percy H. Henson



P. H. Henson.

UNTITLED, n.d.
lithograph
16.1 x 20.2 cm (image)
19.2 x 23.1 cm (sheet)
Collection of the Alberta Art Foundation

Murray W. MacDonald



GLACIER, 1957
watercolour on paper
48 x 66 cm (image)
51 x 68.4 cm (sheet)
Collection of the Alberta Art Foundation

Thelma Manarey



INDIAN BOY, 1954
oil on canvas
38.2 x 30.5 cm
Collection of the Alberta Art Foundation

Lewellyn Petley-Jones



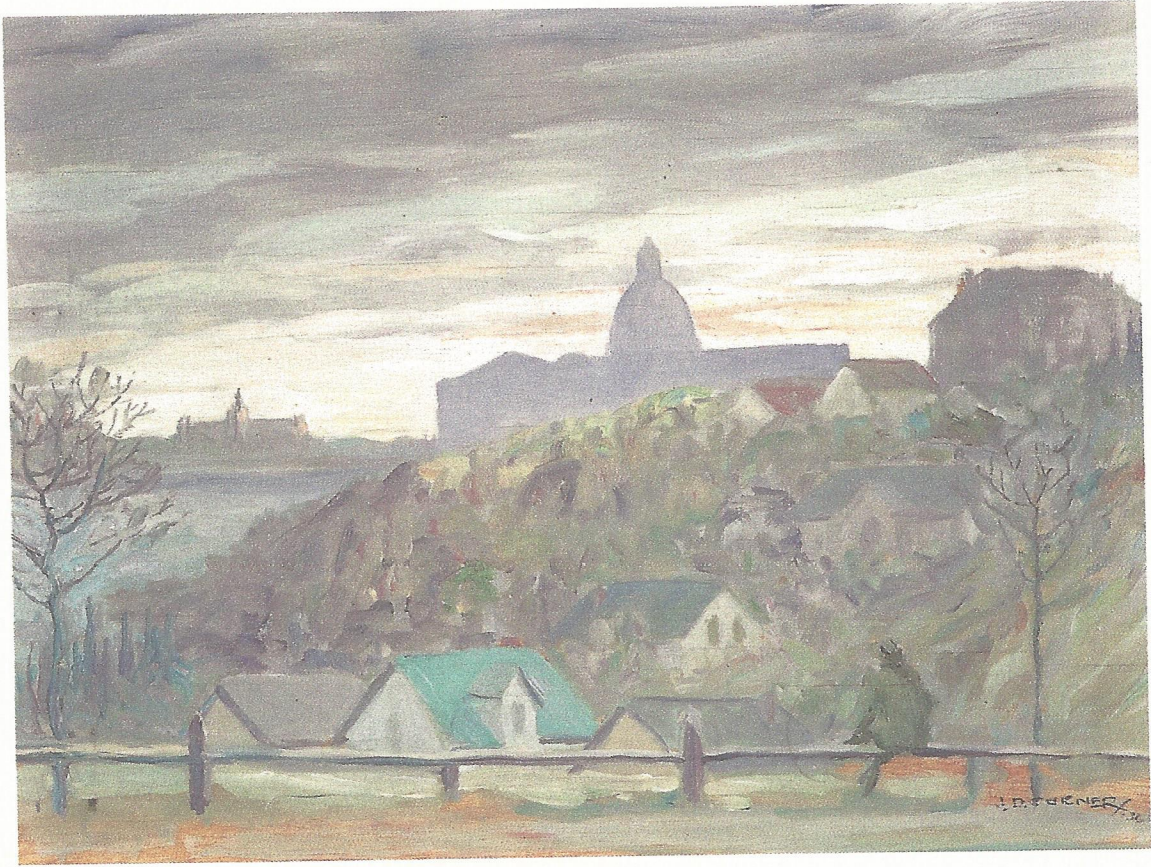
THE ANGLERS, 1948
oil on canvas
72.8 x 91.3 cm
Collection of The Edmonton Art Gallery

Jack B. Taylor



LANDSCAPE, 1963
oil on canvas
71.1 x 86.4 cm
Collection of The Edmonton Art Gallery

J. Davenall Turner



EDMONTON, PARLIAMENT BUILDINGS, 1936
oil on canvas board
23 x 30.4 cm
Collection of the Alberta Art Foundation

George Weber



HOODOOS, DRUMHELLER, ALBERTA, 1960
silkscreen 16/26
32.2 x 40.5 cm (image)
37.5 x 44.5 cm (sheet)
Collection of the Alberta Art Foundation

Ella May Walker



LAUDER'S HOUSE (The First Bakery) n.d.
watercolour
38 x 53.5 cm
Collection of the City of Edmonton Archives

Edmonton Art Club

Membership List: 1921-1987

Former Members

Legend

() Maiden Name

87 Year the member joined the
Edmonton Art Club

C Charter Member

H Honorary Member

Abbot, Sharon 77
Acorn, June 74
Adam, Arthur / W.A. 21 C H
Adams, Gail Ann 79
Adamson, Miss Joan 42
Adamson, Miss Theo. G. 21 C H
Adamson, Thomas 21 C
Anderson, Gertrude / Mrs. C. E. 44
Archibald, Mrs. Arthur
(Mary Campbell) 23
Arends, John 47
Armstrong, Nellie / Mrs. Albert
(McDowell) 34
Armstrong, Patricia A. / Mrs. S.L. 68
Axelson, Miss 49
Banks, Brian W. 75
Baril, Henry L. 72
Barnhouse, Dorothy Paul /
Mrs. George 46
Barrow, Miss Barbara 24
Beach, Linda 85
Beardsley, Virginia Lee 45
Berry, Helen M. 31
Bird, Christina F. 65
Bishop, Earl William 73
Bogaert, Ludo C.E. 70
Bowring, Ed G. 25
Bradshaw, Nell M. / Mrs. A. 40
Brander, Ross Stimpson 74
Bray, Frances 79
Bray, Joan E. (Mortimer) 40
Brindley, George F. 42
Brotheridge, Betty / Mrs. A.H. 64
Brown, George B. 26
Brown, Nellie / Mrs. N. Macdonald 22
Bulyea, Dr. Harry E. 21 C H
Burford, Anr Desiree 62
Calder, Dr. James 55
Cameron, Mrs. Donald
(Stella Mary Ewing) 42
Cameron, Florence, G. 77
Campbell, Robert 21 C H

Campbell-Hope, Bryan / T. Bryan 73
Card, Annie / Mrs. J. (Worswick) 33
Cardiff, M. Kathleen (Kaufman) 34 H
Carlson, Kenneth E. 60
Cartmell, Alban 24 H
Cartmell, Robert 50
Chapin, Monica J. 75
Chappelle, Margaret 41
Chenosky, Beth / Mrs. Ray 72
Cherrey, Ada / Mrs. J.C. 64
Churchman, Elen M. 25
Clark, Henry Giles / Harry G. 38
Clark, L. Scott 33
Cook, C. Denys 72
Coutts, Doris 66
Craig, Edna / Mrs. Clifford 64
Craig, Harry S. 47 H
Crawley, Louise 64
Critchley, Molly (Simmons) 59
Cruickshank, Elsie M. 23 H
Crow, Laura 24
Daley, Alice M. 25
Darby, Phyllis E. M. 68
Desjardins, Paul 58
Dewit, Bert 59
Dingwall, Robert McFarlane 44
Dolmage, Doris Peter 58
Dubuc, Andre 59
Edgerton, Maija 85
Ehret, Alberta A. /
Mrs. C. (Nichols) 51
Ehret, Margaret 50
Engberg, Cora Marie 72
Erb, Dorothy Edith 75
Evans, Lewis 30
Evans, Meredith 66
Evoy, George Arthur / G. Arthur 58
Farrell, Ethel / Mrs. Bruce 67
Field, Ethel L. 29 H
Filer, Mary H. 40
Fleming, Gertrude V. / Mrs. P. J. 27
Flynn, Rosemary Margaret 64
Foster, Hilda Vincent 30
Fowler, Mrs. J. C. 23
Fowler, Jean 33
Frame, Elvera Grace 62
Francis, Georgina 32
Fredericking, Elva (Pearson) 52
Freeman, Esther / Mrs. Elwyn C. 65

Fuller, Dr. L. L. 55
Fulton, Sylvia 68
Fry, Miss Bessie A. /
Mrs. Symons 21 H
Galloway, Dorothy 49
Galper, Rhonda 74
Garner, Alec J. 33 H
Garside, Wilfred N. 43
Gates, T. George 38
Gaunce, Mrs. 45
Gibbs, C. Lionel 21 C H
Gibbs, Len J. 65
Gillies, James 21 C H
Going, Miss Ambia 24
Gosnel, Van G. 24
Gould, G. M. 55
Graham, Donna 65
Grainge, Virginia 67
Gregson, Vivian / Mrs. J. R.
(Bamber) 60
Greene, Evan 38 H
Griffin, Mary F. 65
Guest, Robert C. 73
Hagan, C. Beverly 78
Hale, Beatrice Mrs. 63
Haley, Ruth / Mrs. R. L. 42
Harper, Liliane M. 58
Harrison, Raymond O. 73
Harvie, Mrs. B. M. 23
Heacock, Rebecca M. / Mrs. K. E. 40
Heath, Esther / Mrs. E. R. 72
Heath, Mel 51
Hedley, Robert Wesley 35 H
Heeks, Thomas 24 H
Heine, Jerry 67
Henderson, Helen M. / Mrs. D. R. 47
Henning, Mrs. Andrew S. 28
Henning, Mrs. Flossie M. /
F. M. 26
Henson, Percy H. 50 H
Herbert, Arthur Dennis (Herb) 70
Hickey, Betty / Mrs. W. R. (Maze) 63
Hicklin, Barbara Roe 56
Hilker, Fay / Mrs. Richard 59
Hodgins, Mona W. 55
Hodgson, Mrs. Nona Maude 44
Hogger, Russell J. 80
Holloway, Mrs. A. 34
Holroyd, Frank 27

- Horton, James Harry 71
Howard, Darrell Mrs. 70
Hoyme, O. 29
Hunt, Marjorie 60
Hunter, Jean / Mrs. R. J. 47
Igrici, Steve 70
Irwin, Roy 67
Issakoff, Elisabeth 63
Iwanec, Dr. Parasia 65
Jenkins, John Robert 85
Johnstone, William 21 C H
Jones, Allan R. 68
Jones, Edgar T. 79
Jones, Harry / Harold E. 33
Jones, Lewellyn Petley /
L. Petley-Jones 28 H
Kaufman, Caroline / Mrs. S.
(Reesor) 32 H
Kavanaugh, Sylvia Mrs. 68
Kay, Joyce / Mrs. John 68
Kempffer, Anna Mrs. 73
Keys, Gladys (Sollit) 67
Kingham, H. 33 H
Kitchener, Fred Marshall /
Frederick 21 C H
Kitchener, William Manuel 21 C H
Klawe, Maria 75
Kristiansen, Alfred 50
Kunst, Alvin 69
Landymore, Stanley R. 27
Langdon, Leslie / Mrs. John
(Mortimer) 58
Langley, Phyllis / Mrs. John 69
Lavallee, Roland 83
Leroy, Dr. Brian E. 72
Linstrom, Matt 31
Lowle, Carrie / Mrs. F. F. W. 25
Lubane, Ilda 60
Lundwill, Florence / Mrs. James
MacPherson 68
Lynch, James 38
Macdonald, G. Heath 22
MacDonald, Murray W. 29 H
Macauley, A. C. 21 C H
Maclean, Donna L. 67
MacPherson, James 68
Mais, Kathleen / Kay /
Mrs. Robert 59 H
Manarey, Thelma 50
Marshall, Mrs. Lilley /
Mrs. E. L. 41 H
Mason, Amy / Mrs. Buchanan 57
Mayhew, Emily E. 57
McClintick, June E. 81
McDonald, Helen C. 66
McLean, Robert D. 73
McLeay, Maxine / Mrs. Stan Ross 39
McLung, Miss Nellie 65
Melnik, Willa Margaret 65
Mercer, Mary 38
Mercier, Bérangère 21 C H
Michel, Amy W. / Mrs. A. H. 47
Michie, Christine / Mrs. T. C. 66
Miller, Glenna / Mrs. Doan 38
Miller, Natalie 72
Milne, W. B. 23 H
Mitchell, Hilda Pauline 24
Monckton, Mrs. M. 30
Morgan, James L. 75
Morgan, Marjorie / Mrs. R. A. 67
Morin, Yves 83
Morin, Yvette / Mrs. François 55
Morrier, Mme. Emma 33
Morris, Reginald / G. R. 25
Mortimer, Florence Maud 23
Mott, Michael Alan 68
Moyer, Durward E. 59
Murray, John 81
Nelson, Mildred / M.E. 65
Newell, Dr. Mildred (Folinsbee) 55
NG Fai-Wong, Raymond 74
Nicol, Almira E. / Mrs. Bob 68
Norbury, Major Frank H. 21 H
Ower, Campbell 38
Owren, Bernt E. 68
Park, G. A. 47
Parris, Mary D. (Hunter) 38
Pezzani, C. Gino 60
Pope, Dr. Egerton L. 24
Powell, A. J. H. / Joe 43
Powell, Donald 68
Pritchard, Emily / Mrs. 31
Prosser, Mavis 49
Pym, Octavia 63
Rankin, Sophie 81
Reid, Donald J. 77
Reid, Victor 22
Reilman, Andrew 77
Renyarde, Miss Marjorie 23
Rice, Justine / Mrs. G. R. A.
(Springer) 21 C H
Richards, Ella A. / Mrs. 46 H
Richards, Jean 54
Ripley, David C. 71
Robertson, Miss Helen /
Mrs. Cotton 27
Robertson, Ian 71
Robinson, Vivien 57
Rogers, Thomas 75
Rowan, Rita G. M. / Mrs. Wm. 30
Rowan, Dr. William 30
Ruff, Ada M. 46
Rygalo, Harry 57
Ryland, Dorothy 67
Salamon, Josef 66
Saramento, Edwin 82
Schaffer, Sidi 76
Seaman, Miss C. 39
Seeckts, George F. 70
Sharpe, Don 78
Shearing, Robert 28
Shepetys, Alex 50
Simon, Jill (Owen-Flood) 63
Sinclair, J. Gordon 21 C H
Smith, Mrs. R. A. 22
Spiers, Brian Lionel 58
Spisak, Stephen 79
Steele, Ellen E. / Mrs. T. M. 69
Stengl, Franz 65
Storer, Doris Christine
(de Storer) 27 H
Suska, Helena 73
Taylor, Jack B. 48
Taylor, Madame (Joel-Taylor) 27
Taylor, Joseph 57
Taylor, Turner 41
Thierfelder, Vivian 67
Thomas, Miss Gene M. (Jean) 29
Tipman, Ruby D. C. / Mrs. 49
Toop, Susan 79
Tory, Olive C. 69
Tucker, John 24
Turner, J. Davenall 21 C H
Vandenburg, H. Jan 70
Van Der Gracht, J. 29
Van Der Linden, G. 62
Vermeulen, Dr. Henry H. 69

Edmonton Art Club

Active Members 1987

Voyer, Roxane /
 Mrs. A. (Rodberg) 23 H
 Walker, Ella May / Mrs. O. J. 31
 Watson, Miss E. 36
 Weber, George 35
 Welbergen, Philip A. 59
 Willis, Dorothy C. 27
 White, Helene 71
 White, Wallie 72
 Wood, Alfred Ernest 46
 Woods, F. S. 22
 Wright, Miss Elsie 30
 Wotherspoon, Catherine 77
 Zahiri, Hooshang 85

Legend

() Maiden Name
 87 Year the member joined the
 Edmonton Art Club
 H Honorary Member

Boettcher, Alvira 78
 Boos, Teresa (Bashuk) 85
 Bowering, Elizabeth 84
 Bridgewater, Ruby 77
 Burns, Mary 79
 Bykowski, Liz 84
 Clarkson, Bruce 84
 Clayton, Heather 84
 Cornish, Susan 85
 Dreyer, Chris 80
 Fraser, Kay L. 86
 Gardiner, Susan / Susan E. M. 70
 Henderson, Dr. Robert S. 75
 Hohn, Barbara 64
 Hornig, Sherry L. 86
 Haugland, Jostein 86
 Huculak, Helen 84
 Janisch, Helmut 84
 Janz, Marianne 85
 Kijek, Fred 70
 Lafranchise, Ann (McGee) 84
 Lamnek, Penny 79
 Lampey, Lavinia 80
 Leggat, Terry 84
 Lyons, Donna 86
 Maclaren, Sandra 85
 Mandryk, Rosalette 86
 Matthews, Dorothy 64

Miller, Edith 71
 Moore, Joanna 82
 Morrison, Norma Jean 86
 Nelson, Linda Mae 83
 Neudorf, William 80
 Painter, James O. 85
 Pemberton, Mary / Mrs. J. E. 84
 Pesklivets, Nick 78
 Quinn, Hazel 77
 Rees, Rosemary, 64 H
 Roth, Jean E. 86
 St. Amant, Richard 84
 Schalkwyk, Helene / H. M. E. /
 Leni 68
 Shaw, Sophia, (Podryhula) 79
 Shute, Dorothy 65 H
 Shymko, Donna (Marchyshyn) 84
 Sorochan, Derrick 85
 Stuart, Eileen 61 H
 Thurston, Greg 82
 Ullman, Joan 77
 Vinkenborg, Johanna 66
 Weeks, Helen 86
 Wilkinson, Myrna 79
 Yakimishyn, Sam 85
 Zuhling, Susan 86

Publication Credits

Supervisor of this publication: Gerald J. Gongos

Editor: Stacey Bertles

Editorial secretary: Brenda Racic

Designer: Bob Robertson

Photographer: Lauren Dale (unless otherwise noted)

Typesetting: Résistance Typographers

Printing: Co-op Press

Copyright © 1987 by the Edmonton Art Club

The use of any part of this publication reproduced, transmitted in any form or by any means, electronic, mechanical, photocopying, recording or otherwise, or stored in a retrieval system, without prior consent of the owner, is an infringement of copyright law. Chapter C-30, R.S.A., 1970.

ISBN 0-9692912-0-5



Edmonton Art Club

