



Alberta
Foundation
for the Arts

July 2022

EAC

EST. 1921
EDMONTON ART CLUB
edmontonartclub.com



in this issue...

critiques	<i>pages 2-5</i>
from our library	<i>page 7</i>
scholarship presentations	<i>page 11</i>
our sponsors	<i>page 12</i>
<i>members only</i> meeting minutes	<i>page 13</i>
committee phone list	<i>page 16</i>

cover art: Hard at Work, photo by Rob Guetre



Meet Cindy Revell, critic for our June meeting.

VIBRANT FLOWERS and spirited animals and birds have been showing up in my illustration and fine art for many years. Inspiration can come from anywhere. It can be found in the pistachio colour of an aspen trunk in the rain, a spotted horse in the pasture, the golden colour of light during a walk to the chicken house or the inquisitive birds which are a common element in a menagerie of uncommonly coloured creatures. These characters come to life in gardens, interiors and still lifes where they fuse in an exuberant and vibrantly colourful mix that implies 'what if' and 'anything is possible'.

The seed for a painting can start as tiny thumbnail drawings in sketchbooks, notebooks and bits of paper that litter the studio. Sometimes the ideas come in an instant and sometimes they simmer for a long while. Thick and lively brushstrokes reminiscent of the swirling scratchboard marks from my early years of illustration bring movement and energy to the oil paintings.

Painting is a reliving of experiences for me and a way to meld my thoughts about life with the moments that inspire me. In the process it becomes a whole new story on the canvas that playfully hints of the great connection between all life, and is a celebration of our own magnificent individuality.

Adapted from <https://crevell.fineartstudioonline.com/>

Notes compiled by Jani Galarneau.



FRANCES HESSELES

Awesome work. Great light focus at the front, soft and defused. A nice soft focus on the back of her hair. Maybe soften on the shoulder a little more.



ADA WONG

Lovely, your trees are lyrical and lean into each other, purple is a nice contrast. The trees provide the strongest contrast, tone them down. Your boat is your focal point.

DONNA CHAMBERLAND ▶

Nice swoop and composition. Steam, or mist effectively placed. Rock and water tangent, more cruising around.



JUDY KOCH

Charming scene, lively. The beige object competes with the focal point. Enhance dimensionality by increasing light on one side of the cone while darkening the other side.



BETTY DEAN

Really rich in greens and blues. Simple versus complex. Add more rhythm in the trees.





ROB GUETRE

Nice texture and brush work. A powerful composition, convergence of the railway ties is the focal point. Tone down the contrast where it's not required.



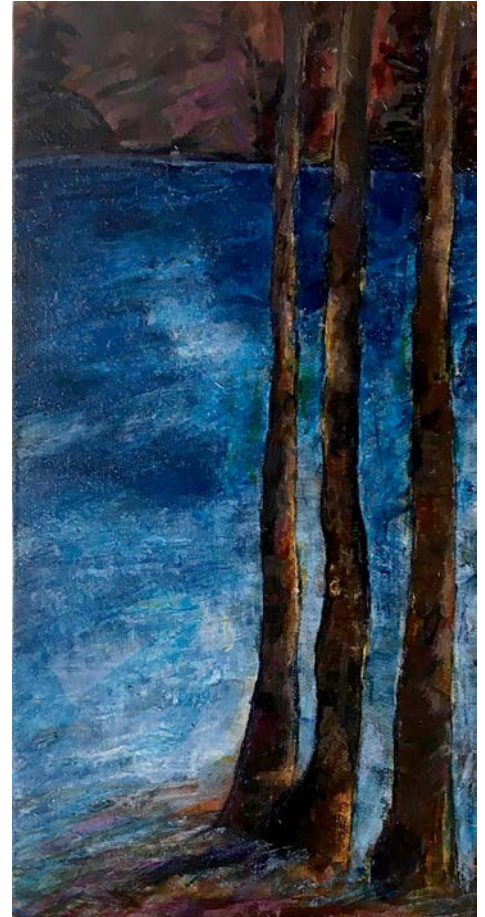
FRANCHESCA SONGCO

Reminiscent of the Impressionists' work. Nice trees, nice brushwork. Observe where the sky holes stand.



BARB STACHOW

Cool concept. Really nice botanical, juicy berries, strong shapes. Maybe something in the negative space that is not the same or add small objects off either end of the branches.



SERAYA SMIT (work in progress)

Texture and colour are nice, love the subtle oranges and purples. Contrast needs a boost, check those values, heavy or light on top, maybe 1 or 2 trees with added orange.



JANI GALARNEAU

Very interesting rhythm with tentacles and waves. Art Deco meets Gnarly. Great contrast with the blue green ... a rule breaker. Crossing in front of the eye is a bit awkward, needs to be shifted over.



RHEA JANSEN

Impressionistic, lovely warm colours. The purples are a great focus. Shots of cool help keep this warm focus point. Maybe add a cool tree, jazz up the contrast at the back.



MICHAELA RAFFERTY

Nice atmosphere and perspective and colours. Reminiscent of Ireland. Perhaps soften the harsh edges on the mountain.



YVONNE BILAN-WALLACE

Beautiful felting with the little squiggles and blobs. Good values and contrast. Adjust the values around the flowers to boost contrast as the flowers are getting lost in the dark. Pay attention to your lighter fibers, some lighter greens.



JAN FRAZER

Delightful colour. Warm and cool are a great foil. The turquoise enlivens the background. Check the variety of sky holes, and make sure your trees are not in a straight line.



JOHANNE SEPTOU

Just too charming for words, sweet. Great subtly of colors and variety. Values and variations well done. Maybe distribution of space, a wee bit lower.



MARG SOMKUTI

Nice brushwork and the blues are beautiful. If you can shift her over a bit so she is not in the centre.



RICHARD ST AMANT

Nice details in the fur and a sweet expression on the cat. Bring more attention to the face by adding some dark values. Very well done.



◀ PENNY LAMNECK

Charming, nice colour. Vase shape and size are well done. Ensure your flowers don't stand in a row, vary their placement.

DENISE HOAG ▶

Powerful, emotional, strong. There's got a lot going on. Love the childlike lettering, not a strong contrast. Pink, yellow into dark, a broken rule.



Distributors of Art Canvases, Cradled Birch Panels, and Display Easels

- Direct shipping from the factory to your studio
- High Quality Apollon Gotrick Products
- Most Competitive Pricing

We invite you to e-mail us with an indication of the products and quantities of which you are interested. Once approved, we will provide you with log-on information. Although there is a \$500.00 minimum order requirement, you pay only after you have received your shipment. Delivery is included to your door on all sizes less than 48 inches x 48 inches. For larger sizes...eg. 60 x 60 additional freight charges may apply.

CANWEST
ART

CANWEST ART SERVICES

www.canwestart.ca canwestart@shaw.ca



ALBERTA COUNCIL FOR THE UKRAINIAN ARTS
AND THE FIBRE ART NETWORK PRESENTS

ON THE BIAS

Artist Talk

**"SEARCHING FOR
DANDELIONS"**

WITH YVONNE BILAN-WALLACE

TUESDAY, JULY 19
2:00PM-3:00PM
ACUA, 9534 - 87 ST

VISIT WWW.ACUARTS.CA TO REGISTER!

acuarts.ca | (780) 488-8558 | 9534 - 87 ST NW

Book Reviews

by EAC Librarian, Barb Stachow

Capturing Light
in Watercolor

Marilyn Simandle with
Lewis Barrett Lehrman

While you are out and about in our beautiful Alberta weather or when you see a painting on the wall and it grabs your attention, you may find that it is the sparkle of light and the feeling of life that holds you in the moment. The way your eye moves through the scene is usually planned in advance by the artist. Influencing eye movement is a primary purpose of design. Design is the placement of pictorial elements, along with values, lines, colours, and especially shapes, within a certain format.

Harmony for the artist is a pleasant combination of elements that create order, agreement and balance in the design; diversity is a variety of elements used to create interest; simplicity is an uncomplicated combination of elements; and rhythm is the regular repetition of one or more elements. The artist attempts to capture light in the rendering of the watercolour and uses light as one element in the design. It is worthwhile then, for the artist to use shapes as building blocks in every painting.

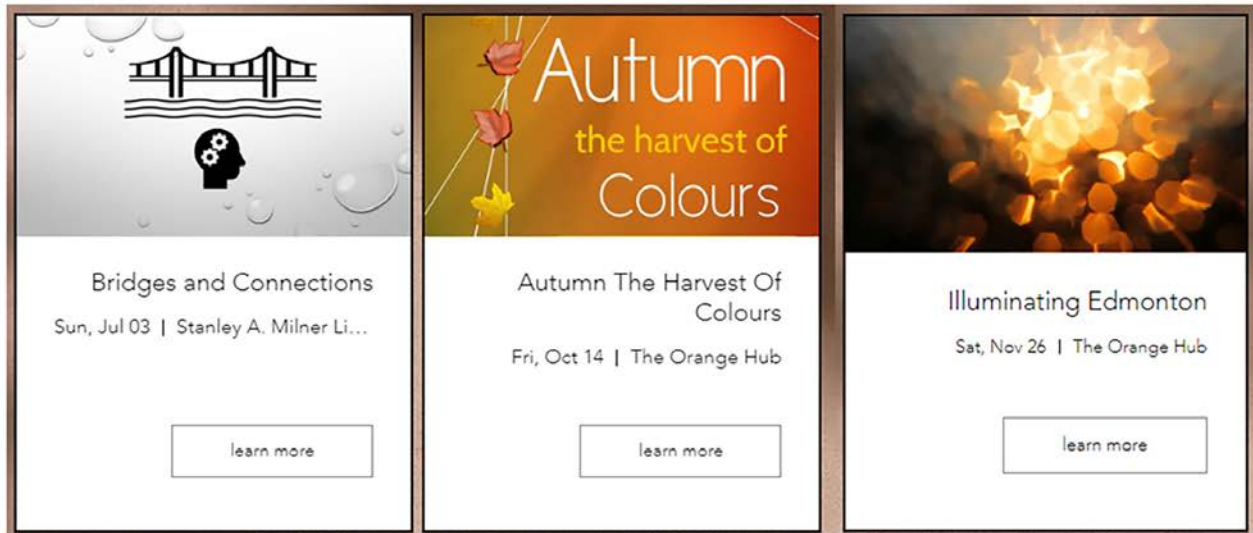
A shape is anything on a painting that is designed or suggested by paint. It can also be the absence of paint (referred to as negative space). There are three basic shapes; organic, geometric and abstract. The ideal composition usually includes a combination of these three basic shapes. The artist simplifies the shapes by seeing objects as shapes, an example of this can be shown by simplifying tree shapes into rough cube shape for the foliage, and cylindrical shapes for the trunk and branches. Static and dynamic shapes could be a receding bridge and its shadow form. Dynamic, triangular geometric shapes point towards the horizon and directs the eyes. Abstract and organic shapes can suggest movement as well.

This book is available in the Edmonton Art Club library, donated by Marlene Briggs



©2012 Connie J. Sun | www.conniewonnie.com

Exhibits



New Members Art Show

- December is our Christmas celebration with a gift exchange of small 6x6 painting, food, music and The New Members Show.
- Traditionally, the previous years new members organize the new members show.
- Due to circumstances beyond our control, the club has not had in-person December meeting since 2019. This year the show will be organized by the executive committee.



ACACA NORTHERN ZONE SHOW

The Edmonton Art Club had great representation at the ACACA Northern Zone Show held in St. Paul, Alberta from May 27- May 29.

Congratulations to the following members who had work selected from the show to go the ACACA Alberta Wide Show:

Ada Wong: *Morning Glitters*

Diana Panizzon: *Elk Island Bison*

Penny Lamnek: *Seasons of Joy* and *Garden Dweller*

Betty Dean: *Piece of Mind* and *Winspear's Davis Organ*

Donna Dahmer (Chamberland): *On Golden Wing*

The Alberta Wide Show will be held in Camrose, Alberta from August 5 to 28, 2022, with the Opening Reception on August 5 from 6:00 – 8:00 p.m.

The Alberta Spirit Show will be held in Red Deer, Alberta from August 30 to October 16, 2022. A reception will be held Friday, September 2 from 5:30 to 7:30 p.m.



THE GILDED RABBIT

Art Supplies & Framing

20% Discount for EAC
Members

10% Discount for All
Students and Seniors

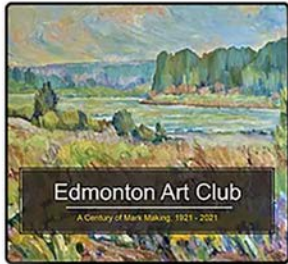
10104 149 Street
780.481.6950
thegildedrabbit.ca

 @gilded_rabbit

 thegildedrabbit



Merchandise Purchase



Commemorative Book \$50.00



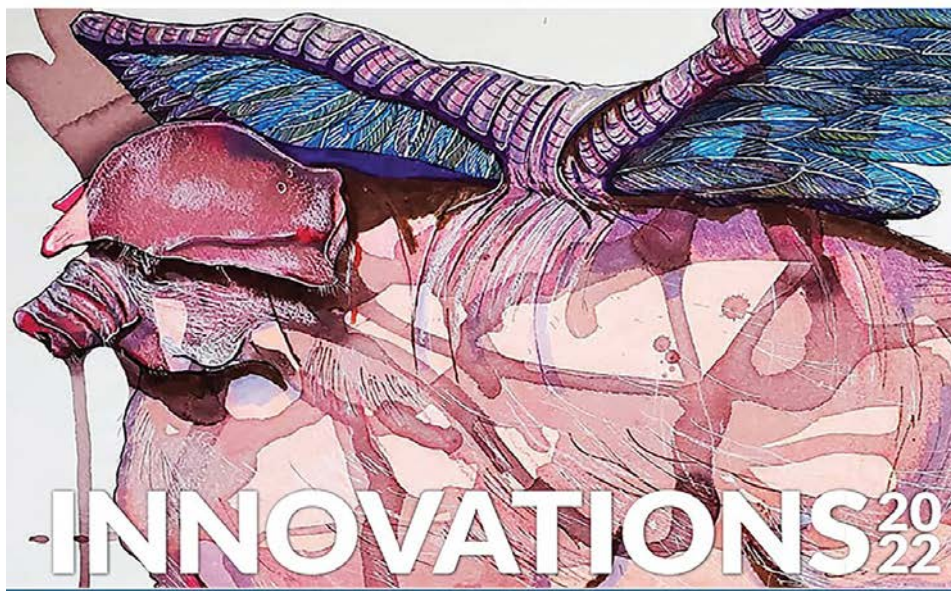
EAC/AGA Poster \$5.00



Mural Poster (double sided)
\$5.00

to purchase, contact Seraya Smit
serayasmit@hotmail.com

INTERNATIONAL SOCIETY OF EXPERIMENTAL ARTISTS



31st ANNUAL INTERNATIONAL OPEN JURIED EXHIBITION

August 18 - October 1, 2022

Hosted by the Art Gallery of St. Albert, Alberta, Canada

OVER US\$14,000 IN PRIZES!



symposium.iseartexhibit.org/inspire



Jake's Framing

10441 123 St, Edmonton, Alberta T5N 1N8 P: 780.426.4649 E: jake@jakesframing.com

Jake's Framing offers superior custom picture framing including museum-grade picture framing, specialized mat-cutting, canvas painting stretching, dry-mounting, and engraving.

"I strive to provide the best customer service in the industry at a fair price.

Please give me a chance to frame your artwork and I promise you won't be disappointed."

Jake Lewis Owner of Jake's Framing since 1993

ANNUAL SCHOLARSHIP PRESENTATION

The Scholarship Recipients for 2021

RHEA JANSEN

Recipient of the Mildred Nelson Scholarship in 2021

I was very pleased to receive this scholarship and immediately proceeded to buy supplies such as oil paints, brushes and canvases. I took an online course offered by Domestika, taught by Ale Casanova in Spanish, and learned how to mix colours and use the medium. When a workshop was offered at the Ottewell Centre in Sherwood Park taught by Mike Svob in person, I signed up and learned various methods to lay the foundation for a successful painting. I am still working on painting mother and child portraits in oil in the style of Mary Cassatt and am learning as much as I can from reading Richard Schmid's book, *Alla Prima*.

Many thanks to the Edmonton Art Club for giving me the opportunity to extend my knowledge and skills in oil painting.

SERAYA SMIT

Recipient of the Card Alling Scholarship in 2021

I am sincerely honored to have been selected as the recipient of the Card Alling Scholarship. Thank you for your generosity, which has allowed me to purchase a generous supply of papers, brushes, watercolour paints, and other accessories. My watercolour journey has begun and I look forward to the adventure.



Pictured from left: Rob Guetre, 2022 Mildred Nelson Scholarship recipient; Betty Dean, Scholarship Committee Chair; Jani Galarneau and Barb Stachow, 2022 Card Alling Scholarship recipients.

Scholarship Recipients for 2022

The Edmonton Art Club offers two scholarships to our members annually via an application process, two Card Alling Scholarships and the Mildred Nelson Scholarship.

Betty Dean, the Scholarship Committee Chair gave a short history of the scholarships and announced this year's recipients and presented their certificates.

The Card Alling Scholarships went to Barb Stachow and Jani Galarneau, while the Mildred Nelson Scholarship went to Rob Guetre

your one resource for

art supplies

PAINT • BRUSHES • MATT BOARD • PENCILS
PENS • SKETCH PADS • CANVAS • EASELS
AND MUCH MORE!

Check Out our App!!
Download our app and access our vast selection of products anywhere

Delta
Art & Drafting Supplies

11116 - 120 street, edmonton, alberta
Ph: 780.455.7983 fx: 780.454.5204
e: info@deltaart.ca 1.888.455.1606
www.deltaart.ca

THANK YOU!

Thanks to Colours, Delta Art and Drafting Supplies, The Paint Spot, and the Strathcona Art Society for their ongoing support in helping to distribute the EAC newsletters!

And thanks to the following businesses who give generous discounts to EAC members!



11116 - 120 Street NW, Edmonton



West Edmonton Mall
8882, 170th St NW, Edmonton



10032 - 81 Ave NW, Edmonton



10660 - 105 St. NW, Edmonton
7359 - 104 St. NW, Edmonton



10441 123 Street NW, Edmonton



Art Supplies & Framing - Discounts for students, seniors, and art memberships

10104 149 Street 780.481.6950 thegildedrabbit.ca



Alberta
Foundation
for the Arts

We're grateful to the Alberta Foundation of the Arts for their continuing support.

As the primary arts resource and grant-funding body in Alberta, the Alberta Foundation for the Arts helps to unleash the potential of every artist through funding, arts promotion, and capacity-building. We provide behind-the-scenes support to artists and arts organizations, giving them the power to inspire minds, encourage expression, foster creativity, and contribute to Alberta's economy. From story time at local libraries to annual festivals on neighbourhood streets, the arts are active in your community. Albertans celebrate and support the arts as artists, volunteers, donors, and attendees at local arts events and activities. Experience, celebrate, and take pride in the arts—they're all around you!

Read more at affta.ab.ca/home.



CARFAC
ALBERTA

Visual Arts Alberta – CARFAC is a Provincial Arts Service Organization funded provincially and municipally that provide a communications hub between members of the visual arts community and the general public. Visual Arts Alberta – CARFAC is the affiliate for the national arts organization Canadian Artists Representation/le Front des artistes canadiens (CARFAC) in the province of Alberta.

CARFAC Alberta Office & Project Space:

3rd Fl., 10215-112 St., Edmonton, AB

Hours: Wednesday to Friday, 10–4pm and Saturday 12–4pm

t 780.421.1731 tf 1.866.421.1731

carfacalberta.com

general@carfacalberta.com

MEETING MINUTES, JUNE 9, 2022

recorded by Frances Hessels

CALL TO ORDER

Seraya Smit called the meeting to order at 7:00 pm.

INTRODUCTION OF GUESTS / NEW MEMBERS

New member: Judy Koch, and guest: Misook Song

APPROVAL OF THE APRIL MINUTES

Moved by Johanne Septou, seconded by Rhea Jansen that the May minutes be accepted as written.

PRESIDENT'S REPORT (Seraya Smit)

Reminder that there are no meetings in July and August. Next meeting will be September 8, 2022.

December is our Christmas celebration with a gift exchange of small 6x6 paintings, food, music and The New Members Show. Traditionally, the previous year's new members organize the new members show. Due the circumstances beyond our control, the club has not had in-person December meetings since 2019. This year the show will be organized by the executive committee.

Last month during our May, 2022 meeting, we voted to invoke a temporary amendment to the exhibiting criteria for members. The temporary amendment is defined by attending three general meetings and submitting three pieces of artwork for critique. This temporary amendment will be in effect until December 31, 2022. January 1, 2023 will reinstate the five and five criteria.

Website statistics indicated that our site was visited by 108 countries, 405 cities worldwide. There were 1,042 users. Information with respect to upcoming exhibits and workshops until December are on the website. Workshop registration can be achieved through the website, or alternatively, today, sign up sheets can be found on the display tables. Payment details are found in the online registration form, or if you're registering today via the sign up sheets, please give your cheque to our Treasurer, Penny Lamnek. Details are on the display tables.

VICE-PRESIDENT'S REPORT (Jani Galarneau)

EXHIBITS

1. PROPAGANDA HAIR SALON SHOW – 10808 124 Street NW April 5 - June 4, 2022*. (show has been extended)

A portion of the proceeds will be donated to the EAC Ukraine relief efforts.

As a group, we are all responsible to promote all shows regardless of whether we are in them.

2. BRIDGES AND CONNECTIONS July 3 – Sept. 23

3. JURIED SHOW, AUTUMN, THE HARVEST OF COLOURS

Friday and Saturday, Oct 14 & 15, 6pm - 9pm and 11am - 4pm

4. ILLUMINATING EDMONTON (Christmas Market) November 26

WORKSHOPS

1. MIXED MEDIA – May 28 & 29 at the Orange Hub, \$120 fee

2. PAVERPOL WORKSHOP – June 18 at the Orange Hub, \$50 fee for members and \$65 for non members

3. CLAY CREATION – September 3, September 10 -full days, November 19 – half day. All classes are at the Orange Hub. \$50. fee for members and \$65. for non members.

We are looking for another member for the workshop committee.

Rhea Jansen discussed in some detail and passed out information and guidelines for the Bridges and Connections Show.

TREASURER'S REPORT (Penny Lamnek)

Balance forward on May 23, 2022	\$10,748.05
Expenses	\$3,280.19
Income	\$2,565.11
Investments , April 30, 2022	
Mildred Nelson Scholarship Account	\$34,461.60
Dec 31, 2021	\$37,700.77
Card/Alling Scholarship Account	\$98,524.13
Dec 31, 2021	\$107,790.16

NEWSLETTER (Rob Guetre)

Submissions for the final newsletter before summer break are due in 2 weeks time.

OTHER BUSINESS

Yvonne Bilan-Wallace conducted an interactive fibre art demonstration.

SCHOLARSHIPS

The Edmonton Art Club offers two scholarships funds to our members annually via an application process, the Card/Alling Scholarship and the Mildred Nelson Scholarship.

Betty Dean, the Scholarship Committee Chair gave a short history of the scholarships and announced this year's recipients and presented their certificates

The Card/Alling Scholarships went to Barb Stachow and Jani Galarneau

The Mildred Nelson Scholarship went to Rob Guetre

The recipients of last year's scholarships, Seraya Smit and Rhea Jansen gave short reports as to how they made use of their funds.

ATTENDANCE

21 members attended, 1 guest, 19 pieces of artwork submitted for critique.

MOTION TO ADJOURN

Moved by Betty Dean and seconded by Marge Somkuti that the meeting be adjourned.

The critic for this evening was Cindy Revell. She was introduced by Ada Wong and thanked by Donna Chamberland.

The meeting concluded with our June meeting tradition, shared snacks from the members

Website What's New

MEMBERS' ONLY UPDATE

- Streamlined Landing Page
- Resource Directory
- What Updates Have I Missed
- Calendar



Temporary Bylaw Amendment

Exhibiting Criteria 2022

The Edmonton Art Club will be temporarily amending the exhibiting criteria for members as outlined in our Bylaws and Policies. The current bylaw stipulates that in order for members to exhibit in any Edmonton Art Club sanctioned event, a member must attend five general meetings and submit five artworks for critique.

The proposed temporary amendment is attending three general meetings and submitting three pieces of artwork for critique.

This temporary amendment will be in effect until December 31, 2022. On January 1, 2023, we will reinstate the five and five criteria.

A NOTE TO MEMBERS REGARDING ADVERTISING IN YOUR NEWSLETTER...

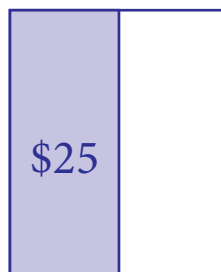
In order to help cover the circulation costs for our newsletter, paid advertising relevant to any artistic activities is being sought from artist groups, suppliers, and non-members. Rates on a per insertion basis are indicated in the page templates (pictured below). Please refer to these for sizes and shapes relative to the printed area of a newsletter page.



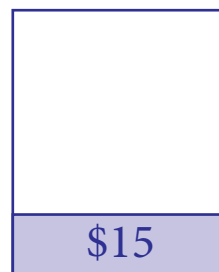
full page



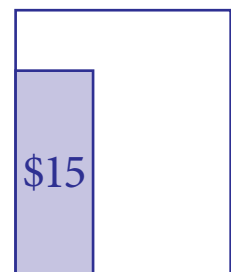
half page horizontal...



and vertical



quarter page horizontal...



and vertical

Important Notice Regarding Liability and Insurance

As per EAC Policies:

- As a condition of entering the show, participants agree that the EAC will not be held liable for damage, loss or theft of their artwork.
- Participants shall be responsible for obtaining adequate insurance coverage for their art work.

Insurance purchased for EAC is liability only, and does not cover personal items or art work.



EDMONTON ART CLUB
EST. 1921

July 3	Bridges & Connections Exhibit Begins
September 8	Monthly Meeting
September 3, 10	Clay Creation Workshop Part 1
September 23	Bridges & Connections Exhibit Ends
October 13	Monthly Meeting
October 14, 15	Annual Juried Show
November 10	Monthly Meeting
November 19	Clay Creation Workshop Part 2
November 26	Illuminating Edmonton Exhibit
December 8	Monthly Meeting, Christmas Celebration/New Member Show

Where can I find this information?

The website has an interactive calendar located in the Members Only section, follow the Calendar and Events link.

Important Dates

Edmonton Art Club Executive and Other Committees 2021

Position	Name	Contact Information	
EXECUTIVE COMMITTEE MEMBERS			
President	Seraya Smit	serayasmit@hotmail.com	780 953-8919
Vice President	Jani Galarneau	jgalarneau@live.ca	780 994-9210
Past President	Rhea Jansen	rheajansen@shaw.ca	780 242-6153
Treasurer	Penny Lamnek	hans.lamnek@outlook.com	780 689-2410
Correspondence Secretary	vacant		
Recording Secretary	Frances Hessels	hessels@shaw.ca	780 436-4912
OTHER COMMITTEE MEMBERS			
Critic Organizer	Ada Wong	artsinabox@gmail.com	780 434-3642
Critique Writer	Jenny Rodrigue	jenita8237@gmail.com	587 879-5367
Critique Photographer	Betty Dean	marydean@telus.net	780 466-9152
Grants Coordinator	Betty Dean	marydean@telus.net	780 466-9152
Grants Committee	Nola Bukvi	nbukvi@shaw.ca	780 444-0927
	Andrew Bedingfield	bedingfield@email.com	780 901-2431
	Donna Chamberland	donnachamberland@shaw.ca	780 250-7414
Historian	Johanne Septou	rseptou@telus.net	780 437-2504
Librarian	Barb Stachow	bstachow@telus.net	780 457-2356
Membership Committee	Jan Fraser	janfraserart@gmail.com	780 435-7525
	Marge Somkuti	somkutimarge@hotmail.com	780 953-3260
Newsletter Producer / Editor	Rob Guetre	rsguetre@gmail.com	780 468-4009
Newsletter Contributor	Betty Dean	marydean@telus.net	780 466-9152
	Ted Widen	twiden@gmail.com	587 497-2262
Newsletter Advertising	Marge Somkuti	somkutimarge@hotmail.com	780 953-3260
Orange Hub Committee	Seraya Smit	serayasmit@hotmail.com	780 953-8919
	Jani Galarneau	jgalarneau@live.ca	780 994-9210
	Betty Dean	marydean@telus.net	780 466-9152
Scholarships Committee	Betty Dean	marydean@telus.net	780 466-9152
	Rhea Jansen	rheajansen@shaw.ca	780 242-6153
Social Convener	Jani Galarneau	jgalarneau@live.ca	780 994-9210
	Seraya Smit	serayasmit@hotmail.com	780 953-8919
Social Media	Seraya Smit (admin)	serayasmit@hotmail.com	780 953-8919
	Jasmin Alstad (editor)	jasminbaldwin1@gmail.com	780 233-4603
Webmaster	Seraya Smit	serayasmit@hotmail.com	780 953-8919
Workshops Committee	Jani Galarneau (admin)	jgalarneau@live.ca	780 994-9210
	Seraya Smit	serayasmit@hotmail.com	780 953-8919

Our Next Meeting

Summer Hiatus:

July and August - no meetings

Next meeting:

September 8, 2022

Welcome New Members

- Yvonne Bilan-Wallace
- Lorie Meyer
- Michaela Rafferty
- Judy Koch
- Muhammed Salayi
- Franchesca Songco
- Lexi Zhu