



Alberta  
Foundation  
for the Arts

June 2022

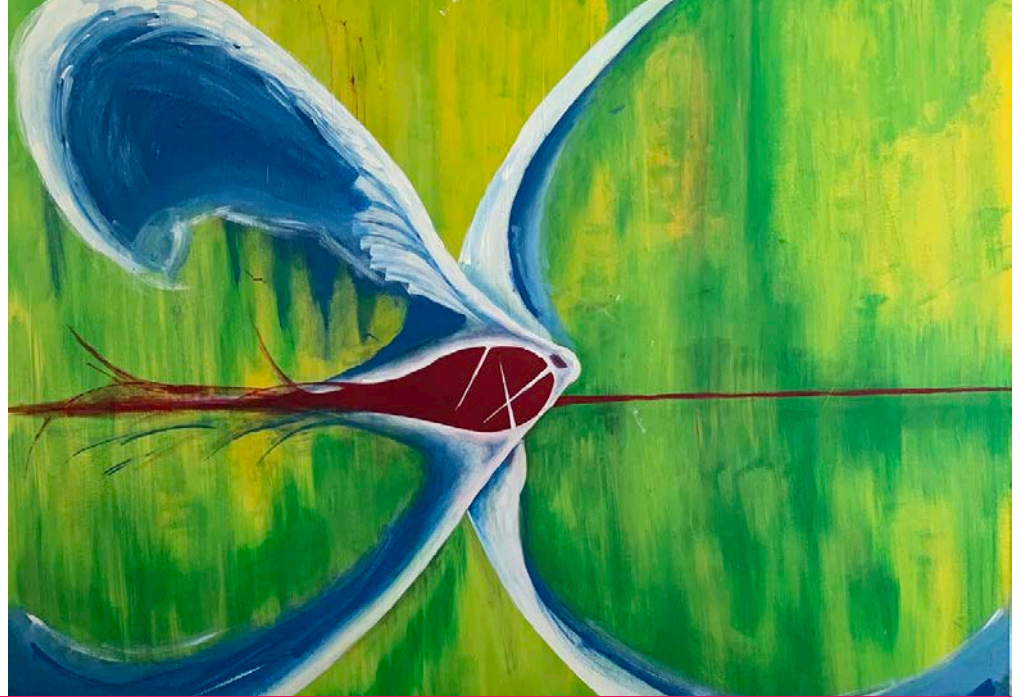
# EAC

EST. 1921  
EDMONTON ART CLUB  
[edmontonartclub.com](http://edmontonartclub.com)

## in this issue...

feature artist	page 2
critiques	pages 3-6
from our library	page 8
our sponsors	page 13
members only meeting minutes	page 14
committee phone list	page 16

cover art: "Spring is Here" by Yvonne Bilan-Wallace



FEATURE ARTIST

# Andrew Bedingfield

**A**NDREW BEDINGFIELD was born in England in 1968, and emigrated to Canada at the age of thirteen.

Andrew was always drawn to the atmosphere and simplicity of communicative imagery. During his adolescence this predilection intensified, encompassing artwork presented in film and advertising.

Initially indulged as a means of meditative withdrawal, the directness of expression that painting affords soon became apparent, and Andrew saw potential for “perfect

visual speech”; free from laws and prerequisites. Although emotionally influenced by painters such as Bacon, Rothko, and Dali, Andrew maintains that conscious imitation is counter-productive, and studies only to establish his own voice.

“I’m interested in a visual code that supersedes language; archetypes distilled through the membrane of experience. These are icons of the underside, designed to convey the hum of consciousness.”



# CRITIQUES

Notes compiled by Jenny Rodrigue. Jayne Willoughby, our scheduled critic for this meeting was unable to attend and the format for critique was adapted to an open forum where members' works were critiqued by peers.



## ◀ DIANA PANIZZON

"Train's a Coming" Acrylic – The railroad narrows down to a very interesting path. Rails need to be a bit wider coming up from the bottom. Maybe some more foliage on the left side of this scene. The snow is rendered nicely and looks like a windy scene.



## FRANCESCA SONGCO

"Abandoned Vehicles" – This piece suggests a melancholy atmosphere. The little spots of red are amazing. The use of white brush strokes is well rendered. This gives a french impressionist type of feel.



## FRANCES HESSELS

"We are Humans, Each of us Unique" Watercolour – Fantastic light and shadows. A beautiful entry for the Bridges and Connections exhibit. The boy's face needs a bit more flesh tone on the right cheek to the forehead. The left side of the Indian girl could use a bit more colour, perhaps a few more feathers to balance and fill the space. The bearded man is a nice anchor to this piece. The difference of people is beautifully rendered.

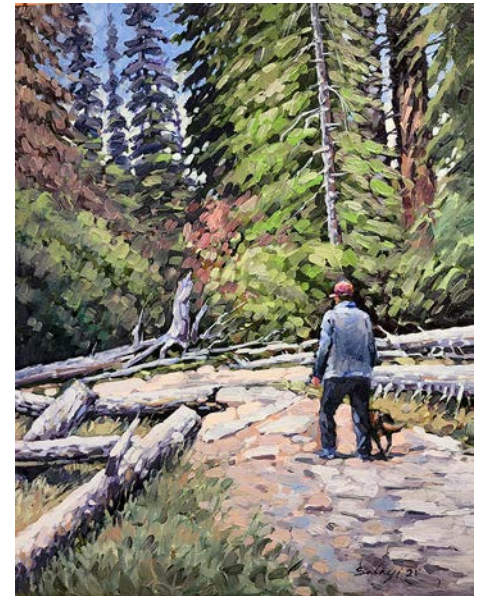


## YVONNE BILAN-WALLACE

"It All Depends on Us" quilting and stitching mixed media – A thoughtful, moving piece! The flow is nice and beautifully done. Love the warmth of yellow leaves against the blue and white background. Interesting spaces between the branches. Great concept of dying the initial fabric with snow.

## BARBARA STACHOW ▶

"Japanese Flora" Watercolour on rice paper – A very nice oriental Kobana style piece. Beautiful!



## MUHAMMED SALAYI

"The Hiker" water soluble oil – The pathway and repetition of pink colour makes the eye move. The background trees could be a little more irregular creating interest. A well executed piece from two photos.





**SERAYA SMIT**

“One of Six Butterflies with Echinacea Flower” acrylic, mixed media – Beautiful and the use of resin coating emphasizes the colours. A bright cheerful piece.



**RHEA JANSEN**

“Iris” – Lovely composition. The use of cerulean blue adds to the harmony of colours. Great colour selection. The back petal could use a bit of blending to soften. The underneath petal on bottom left and back petal underneath could have a stronger shadow. A beautiful placement of light, perhaps a little lighter on the front petal.



**LEXI ZHU**

“My Cat” watercolour on rice paper – A surreal, peaceful piece. Nicely rendered brush technique. Love the contrast textures, between the softness all around and the crispness of the cat’s eyes. The eyes provide a nice focal point.



**ADA WONG**

“Love Without Words” – Emotional, beautiful memory of a romantic couple. Nice highlights! The horizontal shadow forces the eye across the painting. Darkening the shadow about the right side of the woman’s sweater would create more of a closeness. A little more shadow on the right side of the umbrella and under the trees on the fence might create more balance.



**MYRNA WILKINSON**

“Mountain Scene” – A gorgeous Rocky Mountain scene. The sky is beautiful. The orange and yellow foliage is a little too balanced. A little darker value underneath the rocks in the foreground would create a bit more depth. Some of the bushes in the foreground need to have darker colours. The mountains are beautiful!



**JENNY RODRIGUE**

“Tulips, challenge from a photo” – A very good painting. The tulips in the back need to be a lighter as they are receding. A few more tulips at random would help give this a more natural feel. It’s more of a designed composition.



**JOHANNE SEPTOU**

“Peacock Medley #3” acrylic and mixed media – A great experimentation of different forms of art e.g.: pouring first, laying down the peacock feathers and filling it in with acrylics. Very nice movement with the curly lines added because it’s nice movement in those skinny little things coming off the stem. The green on the top left could be adjusted to flow more into the painting.



**ANDREW BEDINGFIELD**

“Hourglass Study” – A unique perspective of time. The drawing shape is wonderful. The inside of the glass could be lighter than the background and the structure needs to be grounded. Gloss medium with a bit of zinc white might heighten the glass.



**RICHARD ST AMANT**

“Distortion and Yellow” – A unique piece made from pig skin. Pure creation of molding and allowing the shape to take form.



**JANI GALARNEAU**

“Athabasca River Below the Falls” acrylic and mixed media – This has a magical luminous feeling. The atmosphere makes the subject a special place. The paper on the rocks makes it very organic, like looking little fossils. The rocks are positioned well. The outside border of this piece could be darker. Connect the rocks in the background with oranges and reds.



**JAN FRASER**

“Flowers” – Lovely composition with great atmosphere. The painting has a softness, a happy feel. The blending of blues reads well from the distance. The yellow in the flowers is well brought out. The tree trunks add interest to this piece.

# CRITIQUES (CONTINUED)



## DONNA CHAMBERLAND

“High Level Bridge” – This piece renders a local lovely sunset with the reflections on the water. The rocks are amazing. The white-water horizontal line lifts the painting. The foreground and background are set well with the rocks in the front.



## GAIL FAREWELL

“Watercolour Trees” – A vibrant piece with lots of colour! The looseness and boldness of colour work well. A few darker trees in the background could be added. Lovely snow and shadows are beautifully painted. The diagonal of the creek works well.

# WORKSHOP HIGHLIGHTS Suzanne Northcott – Acrylic and Mixed Media



This painting was completed during an Edmonton Art Club workshop led by Suzanne.

During her workshop earlier this year, Suzanne gradually developed this piece as she discussed and demonstrated various techniques, including mark-making and composition, building beautiful surfaces, brushwork, figure/ground relationships and personal expression.

Suzanne's price for a 12 x 12 is usually \$1200. Because this was a demo piece, she would reduce the price to \$850.

For the purposes of this sale and to support the Ukrainian relief efforts, Suzanne requested a price of \$550.

The entire amount will be donated.



Based in Langley, Canada, Suzanne Northcott is an interdisciplinary artist. Always a painter, she has moved through video, installation and photography. She has collaborated with poets, biologists and artists in other disciplines. Recently, environmental and feminist concerns drew her to textile and hand stitching.

Her new studio project is called Morph:ology, concentrating on up cycling garments. Themes of swarm behaviour, migration and the relationship of the one to the many compel her. Her work is held in private and public collections in Canada and worldwide.

<https://www.morphology.studio/>



# MEET AND GREET

*Propaganda Hair Salon Gallery Exhibition*



BLOCK PRINTS  
5X5 : \$5  
8X8 : \$6  
12X24 : \$9





## Book Reviews

by EAC Librarian, Barb Stachow

# Watercolor From the Heart - Techniques for Painting the Essence of Nature

by Barbara Nechis

**T**his book offers a very different perspective of what watercolour can be. The book is presented in four sections. First, the creative process, second, glazing and painting wet-into-wet, Third, the painting itself and how to be inventive when designing your painting and forth, how to paint on location while you absorb the natural environment into your work and how photography can work as an aid.

Photography can help by providing aid of reference. Very rarely would you paint directly from a photograph. The photograph will simply provide a new viewpoint. Asking yourself what is there in the landscape that maybe you never realized. Turn the photograph upside down and the water becomes a cloud, the pastel colours of trash can resemble the wood of a barn siding with texture. Seeing the shapes rather than the objects in a picture can take an object and change the way you see it. When you consider this, you may have found new ways to use photograph as a tool in your work.

Thus, no matter where you choose to set up and paint this summer try to view your world in different ways. The linear line view of a bridge may become veins in a leaf. The curve of a flower may become the curve of the bridge. The ideas provided by nature can quickly be absorbed and used to add excitement to your painting. So while you are enjoying the great outdoors this summer take some time to experiment with what you see and what your camera can see. It could be the makings of your best work yet!

*This book is available in the Edmonton Art Club library, donated by Reta Koslo*



## OPEN STUDIO Moves Outside

Francesca and Jani painted outside during open studio last week. Francesca wanted others to know that she is almost always painting outdoors in various locations. Just call if you want to join her (her number is on our membership list).





# P E R S P E C T I V E

**E**ILEEN STUART joined our club in 1961 and became an honorary member. Her daughter, Barb MacLaren, recalls her mom painting en plein air. Eileen would paint in their basement listening to CBC classical music with the scent of incense wafting through the house. She had a gallery, Canada West Artists, at Jasper Park Lodge and her paintings were shipped all over the world. Barb is a long time friend of mine and I am delighted to find this connection.



Jan Fraser



"It's good, but I don't know if it's refrigerator door good."

Bridges: Connecting Diversity  
Sun, Jul 03 | Stanley A. Milner Li...

Autumn  
the harvest of  
Colours  
Autumn The Harvest Of Colours  
Fri, Oct 14 | The Orange Hub

# UPCOMING EXHIBITS

# & WORKSHOPS

**Paverpol Workshop**  
Members \$50 Non Members \$65  
June 18, 2022

**Clay Creation**  
Members \$50 Non Members \$65  
September 10 and November 19

THE  
**GILDED RABBIT**  
Art Supplies & Framing

---

20% Discount for EAC Members  
10% Discount for All Students and Seniors

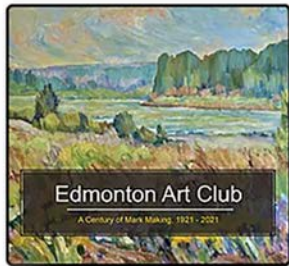
---

10104 149 Street  
780.481.6950  
thegildedrabbit.ca

---

@gilded\_rabbit  
 thegildedrabbit

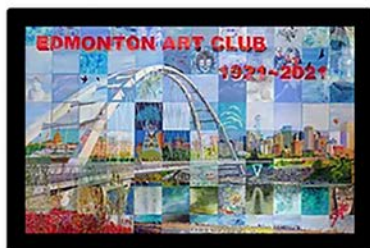
## Merchandise Purchase



Commemorative Book \$50.00



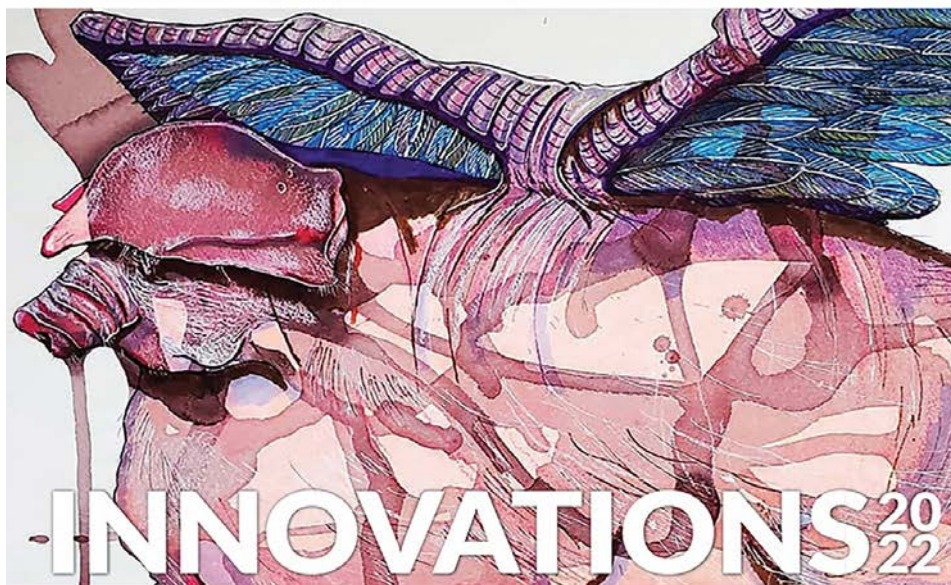
EAC/AGA Poster \$5.00



Mural Poster (double sided)  
\$5.00

to purchase, contact Seraya Smit  
[serayasmit@hotmail.com](mailto:serayasmit@hotmail.com)

## INTERNATIONAL SOCIETY OF EXPERIMENTAL ARTISTS



# INNOVATIONS<sup>20</sup><sub>22</sub>

CALL FOR SUBMISSIONS OPEN MARCH 1 - 31, 2022

## 31st ANNUAL INTERNATIONAL OPEN JURIED EXHIBITION

August 18 - October 1, 2022

Hosted by the Art Gallery of St. Albert, Alberta, Canada

OVER US\$14,000 IN PRIZES!



[symposium.iseaartexhibit.org/inspire](http://symposium.iseaartexhibit.org/inspire)



## Jake's Framing

10441 123 St, Edmonton, Alberta T5N 1N8 P: 780.426.4649 E: [jake@jakesframing.com](mailto:jake@jakesframing.com)

Jake's Framing offers superior custom picture framing including museum-grade picture framing, specialized mat-cutting, canvas painting stretching, dry-mounting, and engraving.

*"I strive to provide the best customer service in the industry at a fair price.*

*Please give me a chance to frame your artwork and I promise you won't be disappointed."*

**Jake Lewis** Owner of Jake's Framing since 1993

your one resource for

# art supplies

PAINT • BRUSHES • MATT BOARD • PENCILS  
PENS • SKETCH PADS • CANVAS • EASELS  
AND MUCH MORE!



**Check Out our App!!**  
Download our app and access our vast selection of products anywhere



11116 - 120 street, edmonton, alberta  
Ph: 780.455.7983 fx: 780.454.5204  
e: info@deltaart.ca 1.888.455.1606

[www.deltaart.ca](http://www.deltaart.ca)

©2015 Stivers



## BE AN

# Artist

YOU'LL GET:

- FAME
- WEALTH
- BEAUTIFUL LOVERS
- A BRIEF RESPITE FROM YOUR TERROR OF DYING

### Testimonials!

"I'm sixty, and I'm dating a twenty-year-old."  
—Pablo P.

"I get invited to all the best parties."  
—Andy W.

Yes! I'd like to alter the course of cultural history.  
Mail 25 cents to: BE AN ARTIST, Box 42, Hohokus, NJ

# THANK YOU!

Thanks to Colours, Delta Art and Drafting Supplies, The Paint Spot, and the Strathcona Art Society for their ongoing support in helping to distribute the EAC newsletters!

And thanks to the following businesses who give generous discounts to EAC members!



11116 - 120 Street NW, Edmonton



West Edmonton Mall  
8882, 170th St NW, Edmonton



10032 - 81 Ave NW, Edmonton



10660 - 105 St. NW, Edmonton  
7359 - 104 St. NW, Edmonton



10441 123 Street NW, Edmonton



Art Supplies & Framing - Discounts for students, seniors, and art memberships

10104 149 Street 780.481.6950 thegildedrabbit.ca



Alberta  
Foundation  
for the Arts

**We're grateful to the Alberta Foundation of the Arts for their continuing support.**

As the primary arts resource and grant-funding body in Alberta, the Alberta Foundation for the Arts helps to unleash the potential of every artist through funding, arts promotion, and capacity-building. We provide behind-the-scenes support to artists and arts organizations, giving them the power to inspire minds, encourage expression, foster creativity, and contribute to Alberta's economy. From story time at local libraries to annual festivals on neighbourhood streets, the arts are active in your community. Albertans celebrate and support the arts as artists, volunteers, donors, and attendees at local arts events and activities. Experience, celebrate, and take pride in the arts—they're all around you!

Read more at [affta.ab.ca/home](http://affta.ab.ca/home).



CARFAC  
ALBERTA

Visual Arts Alberta – CARFAC is a Provincial Arts Service Organization funded provincially and municipally that provide a communications hub between members of the visual arts community and the general public. Visual Arts Alberta – CARFAC is the affiliate for the national arts organization Canadian Artists Representation/le Front des artistes canadiens (CARFAC) in the province of Alberta.

**CARFAC Alberta Office & Project Space:**

3rd Fl., 10215-112 St., Edmonton, AB

Hours: Wednesday to Friday, 10–4pm and Saturday 12–4pm

t 780.421.1731 tf 1.866.421.1731

[carfacalberta.com](http://carfacalberta.com)

[general@carfacalberta.com](mailto:general@carfacalberta.com)

# MEETING MINUTES, MAY 12, 2022 recorded by Frances Hessels

## CALL TO ORDER

Seraya Smit called the meeting to order at 7:00 pm.

## INTRODUCTION OF GUESTS / NEW MEMBERS

New members: Francesca Songco, Lexi Zhu, Mohamed Salayi  
Guests: Judy Koch, Les Holmgren

## APPROVAL OF THE APRIL MINUTES

Moved by Nola Bukvi, seconded by Johanne Septou that the April minutes be accepted as written.

## PRESIDENT'S REPORT (Seraya Smit)

a) NEW FORMAT Due to the illness of our scheduled critic, Jane Willoughby, the format of this meeting's critique will be Open Forum. The artist will have 1 minute to introduce their artwork. The audience will have 4 minutes to deliver a critique. The process will be open discussion.

b) EXHIBITING CRITERIA Seraya introduced the topic of Exhibiting Criteria for 2022. The current bylaw stipulates that in order for members to exhibit in any Edmonton Art Club sanctioned event, a member must attend 5 general meetings and submit 5 artworks for critique. Because of irregular meetings in 2022 due to COVID the membership should reconsider a temporary amendment.

Moved by Barb Stachow, and seconded by Jan Frazer the following amendment, carried.

The proposed temporary amendment is attending three general meetings and submitting three pieces of artwork for critique. This temporary amendment will be in effect until December 31, 2022. January 1, 2023, we will reinstate the five and five criteria.

c) WEBSITE UPDATE. Referral to the display at the back table of website information

Information on exhibits and workshops until September is on website. Workshop registration can be achieved through website. Payment details are found in the online registration form.

## VICE-PRESIDENT'S REPORT (Jani Galarneau)

### EXHIBITS

a) EAC UKRAINE RELIEF EFFORTS Propaganda Hair 10808 124 Street, April 5 - June 4

*Meet the artist* Sunday, May 15, 2-4pm

Please note that portion of the proceeds will be donated.

As a group we are all responsible to promote all shows regardless of whether you are in it.

b) BRIDGES AND CONNECTIONS, Sunday, July 3

Rhea will talk more about this exhibit

c) AUTUMN: THE HARVEST OF COLOURS, Juried Show, Friday and Saturday, October 14 & 15, 6-9pm and 11am- 4pm

We will have smaller items for sale in a separate area of the show

d) ILLUMINATING EDMONTON 12"x12" Show, Nov 26 at the Orange Hub.

## WORKSHOPS

a) MIXED MEDIA, \$120, May 28 & 29, 10am-4pm at the Orange Hub

b) PAVERPOL WORKSHOP, members \$50 non-members \$65, June 18, 10am at the Orange Hub

d) Clay Creation

*Session #1* September 10, full day

*Session #2* November 19, half a day

At the Orange Hub, members \$50, non-members \$65

We are also looking for another member for the workshop committee.

## TREASURER'S REPORT (Penny Lamnek)

Balance forward on March 23, 2022	\$9,650.52
Expenses	\$314.98
Revenue	\$1,412.51
Closing balance , May 5, 2022	\$10,748.05

## ART SHOWS (Rhea Jansen)

Because some members were having difficulty with the theme, Bridges and Connecting Diversity, the theme will change to Bridges and Connections.

## NEWSLETTER (Rob Guetre)

Seraya Smit delivered the message that submissions are due in 2 weeks

## MEMBERSHIP COMMITTEE

Name tags are available for purchase.

## LIBRARIAN (Barb Stachow)

A book review is featured in the newsletter each month. Book donations are welcomed.

## ATTENDANCE

20 members attended, 2 guests, 19 pieces of artwork submitted for critique.

## MOTION TO ADJOURN

Moved by Barb Stachow and seconded by Johanne Septou that the meeting be adjourned.

Gofers – Diana Pannizon and Marge Somkuti

## Temporary Bylaw Amendment

### Exhibiting Criteria 2022

The Edmonton Art Club will be temporarily amending the exhibiting criteria for members as outlined in our Bylaws and Policies. The current bylaw stipulates that in order for members to exhibit in any Edmonton Art Club sanctioned event, a member must attend five general meetings and submit five artworks for critique.

The proposed temporary amendment is attending three general meetings and submitting three pieces of artwork for critique.

This temporary amendment will be in effect until December 31, 2022. On January 1, 2023, we will reinstate the five and five criteria.

## Website What's New

### MEMBERS' ONLY UPDATE

- Streamlined Landing Page
- Resource Directory
- What Updates Have I Missed
- Calendar

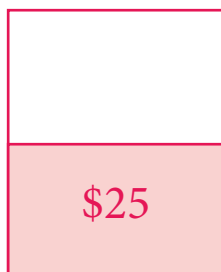


### ***A NOTE TO MEMBERS REGARDING ADVERTISING IN YOUR NEWSLETTER...***

In order to help cover the circulation costs for our newsletter, paid advertising relevant to any artistic activities is being sought from artist groups, suppliers, and individuals. Rates on a per insertion basis are indicated in the page templates (pictured below). Please refer to these for sizes and shapes relative to the printed area of a newsletter page.



full page



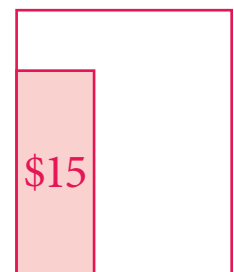
half page horizontal...



and vertical



quarter page horizontal...



and vertical

### ***Important Notice Regarding Liability and Insurance***

As per EAC Policies:

- As a condition of entering the show, participants agree that the EAC will not be held liable for damage, loss or theft of their artwork.
  - Participants shall be responsible for obtaining adequate insurance coverage for their art work.
- Insurance purchased for EAC is liability only, and does not cover personal items or art work.

## Edmonton Art Club Executive and Other Committees 2021

Position	Name	Contact Information	
<b>EXECUTIVE COMMITTEE MEMBERS</b>			
President	Seraya Smit	serayasmit@hotmail.com	780 953-8919
Vice President	Jani Galarneau	jgalarneau@live.ca	780 994-9210
Past President	Rhea Jansen	rheajansen@shaw.ca	780 242-6153
Treasurer	Penny Lamnek	hans.lamnek@outlook.com	780 689-2410
Correspondence Secretary	vacant		
Recording Secretary	Frances Hessels	hessels@shaw.ca	780 436-4912
	Eleanor MacAllister*	emaca418@gmail.com	780 886-3186
<b>OTHER COMMITTEE MEMBERS</b>			
Critic Organizer	Ada Wong	artsinabox@gmail.com	780 434-3642
Critique Writer	Jenny Rodrigue	jenita8237@gmail.com	587 879-5367
Critique Photographer	Betty Dean	marydean@telus.net	780 466-9152
Grants Coordinator	Betty Dean	marydean@telus.net	780 466-9152
	Nola Bukvi	nbukvi@shaw.ca	780 444-0927
Grants Committee	Andrew Bedingfield	bedingfield@email.com	780 901-2431
	Donna Chamberland	donnachamberland@shaw.ca	780 250-7414
Historian	Johanne Septou	rseptou@telus.net	780 437-2504
Librarian	Barb Stachow	bstachow@telus.net	780 457-2356
Membership Committee	Jan Fraser	janfraserart@gmail.com	780 435-7525
	Marge Somkuti	somkutimarge@hotmail.com	780 953-3260
Newsletter Producer / Editor	Rob Guetre	rsguetre@gmail.com	780 468-4009
Newsletter Contributor	Betty Dean	marydean@telus.net	780 466-9152
	Ted Widen	twiden@gmail.com	587 497-2262
Newsletter Advertising	Marge Somkuti	somkutimarge@hotmail.com	780 953-3260
Orange Hub Committee	Seraya Smit	serayasmit@hotmail.com	780 953-8919
	Jani Galarneau	jgalarneau@live.ca	780 994-9210
	Betty Dean	marydean@telus.net	780 466-9152
Scholarships Committee	Betty Dean	marydean@telus.net	780 466-9152
	Rhea Jansen	rheajansen@shaw.ca	780 242-6153
Social Convener	Jani Galarneau	jgalarneau@live.ca	780 994-9210
	Seraya Smit	serayasmit@hotmail.com	780 953-8919
Social Media	Seraya Smit (admin)	serayasmit@hotmail.com	780 953-8919
	Jasmin Alstad (editor)	jasminbaldwin1@gmail.com	780 233-4603
Webmaster	Seraya Smit	serayasmit@hotmail.com	780 953-8919
Workshops Committee	Jani Galarneau (admin)	jgalarneau@live.ca	780 994-9210
	Seraya Smit	serayasmit@hotmail.com	780 953-8919

\*Eleanor will act as recording secretary for Zoom meetings only. Frances Hessels to take over once we resume in person meetings.