

EST. 1921
EDMONTON ART CLUB
edmontonartclub.com



in this issue...	
critiques	pages 2-3
before and after	page 6
reflections	pages 8-9
our sponsors	page 11
members only	
AGM meeting minutes	page 12-13
committee phone list	page 15
cover: "River Valley" photo by Rob Guetre	



Alberta
Foundation
for the Arts



Emily Jan, our critic

EMILY JAN CREATES intricately crafted, hyper-realistic installations of found objects inhabited by both handmade and found flora and fauna.

As a writer and illustrator, Jan creates artist's books that amalgamate the lived research of a semi-nomadic life into works that engage broader concepts such as the circularity of time, the richness of biological and cultural diversity, and the finitude of the planet. Her subject matter ranges in scale from the vast landscapes of the Alaska Range to the minute details of the museum specimen.

In this age of mass extinctions and climate change, the importance of being able to envision places we may never personally see, to hold space for them in our minds and in our hearts, is ever greater. To this end, the work both sculptural and literary seeks to transport some of that distant experience to the viewer – to stretch the boundaries of our collective imaginings in order to encompass the unseen, to learn to love the unknown as well as the familiar, and ultimately to strive to weave all these strands into a larger narrative about what it means to be a human living in a world roiling with turmoil and catastrophe but yet which is still mysterious and beautiful.

adapted from <https://emilyjan.com/>



JANI GALARNEAU

24 x 36 Oil "The Arrival" Dracula #1
Theatrical, very atmospheric, sense of mystery. Many layers in the mist, green is effective and creates suspense. Purple is wonderful and definitely not Disney. Strange, captivating glow from the red underpainting. Do this in the rest of the series. Intrigue by the shadowy figure is uncanny, slightly disturbing. Amazing clouds, moon is perfect. Not sure why the mist / clouds change colour from purple to gray, may need more transition. Great composition. This is a great series that I hope continues. Really like the size of the piece. Reminds me of Jim Davies, love the mood and great capture of anxiety.



DONNA CHAMBERLAND

Beautifully realized. Successful layering of colors shows the contrast between old grass and new blossoms. This captures the season and evokes spring. Exceptional use of shading; beautifully rendered. The flowers pop (yet the painting itself is calming). The subject is very well placed in the piece, which adds flow to the image. The detail in the background really highlights the beauty of the flowers. The hues are lovely – mild yet fresh. This painting makes me mad! I tried crocuses and they were nowhere near the high quality of this work. Thanks for the inspiration!



◀ **FRANCES HESSELS**

The painting is sensitive and captures the impishness of the boy. The background is soft and loose and puts emphasis on the child. The object, under which he is peering, should have more colour or texture.



SERAYA SMIT

“The Giant Steps, Paradise Island, Lake Louise”

Good sense of space and use of colours. I can hear the roar of the water and feel the spray. I like its transparency in certain places. There is dynamic movement here, the flow of water is realistic and ties well with the landscape. Good combination of soft and hard edges. The midground trees with their soft edges unites the background and foreground. Good gestural quality. The saturated colours of the rocks suits them. I like the warmth under the water. Overall, good use of colours, the orange colour gives the rocks a deep richness. Rocks to left could have a little added reflection to them.



NOLA BUKVI

There is a traditional feel to this painting. Great use of colour, with the red structure and the cardinal. Wonderful composition. The shadows and texture in the woods brings balance. Take it to another level, something still needed behind the trees to bring the eye back.



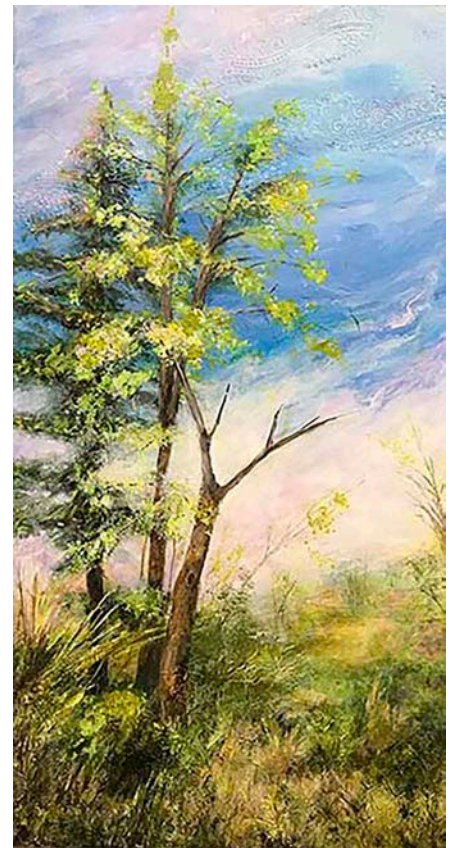
PENNY LAMNEK

[no notes available]



RHEA JANSEN

An experimental piece. Great texture and lush colours. The lights and darks create a lovely depth. The right side is less interesting than the left side and needs more colour variety, movement and contrast to balance the piece.



BETTY DEAN

12 x 24 mixed media “Spring”
A light, airy piece with good use of colour. Textures add interest and mood. I like the way the sides are handled, good composition. I would suggest you work on the dead tree.





Suzanne Northcott

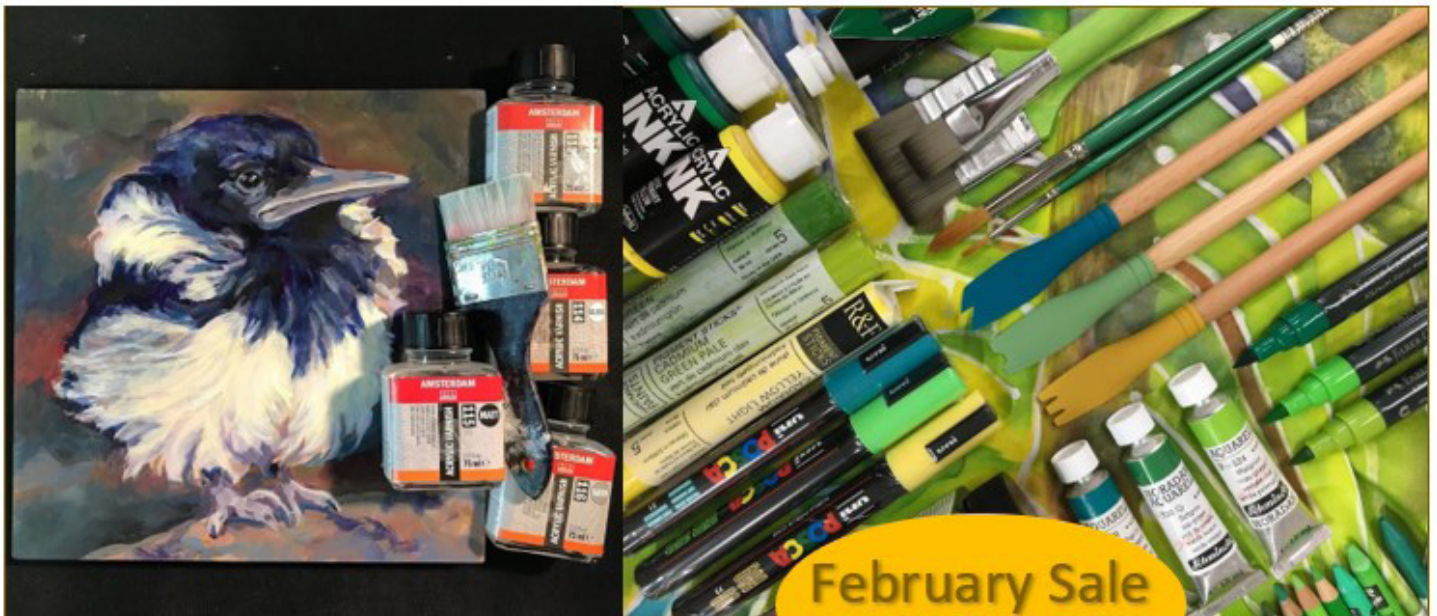
Acrylic and Mixed Media

Location: TBD

Friday, April 29 to Sunday, May 1, 2022

9:00am to 4:00pm
\$375

This workshop format will lean on individual instruction and will also include lecture, discussion, and demonstration of particular techniques, including mark-making and composition, building beautiful surfaces, brushwork, figure/ground relationships, and personal expression. Artists may choose to integrate drawing media or image transfer.



February Sale
SAVE 10% - 50%



GALLERY

Tips on varnishing can be found on our **YouTube Channel** and **blog posts** on our website.

ART SUPPLIES

**10032 81 AVE
EDMONTON AB**

PAINTSPOT.CA

ART CLASSES



BEGINNING FEB 5TH

**THE LOFT ART GALLERY & GIFT GALLERY
OF THE ART SOCIETY OF STRATHCONA COUNTY
IS OPEN!**

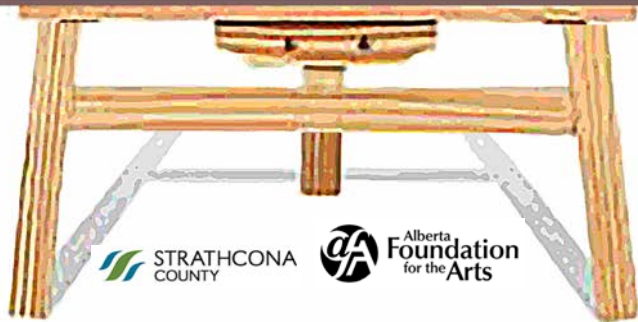
Saturdays & Sundays from 12 noon to 4 pm

at the Ottewell Centre (the Red Barn),
590 Broadmoor Blvd, Sherwood Park

SOLO ARTIST FOR FEBRUARY IS STEPHANIE LANE

***New beautiful artist-made gifts and artwork
from member artists in the Gift Gallery!***

Support your local artists with a visit to the Loft
www.artstrathcona.com or artsoc@telus.net



HELP NEEDED!

We need ideas for a suitable theme for our upcoming show at the Milner Library.

We are very fortunate to be asked to display our artwork at this beautiful venue for July, August and September of 2022. The current theme EPL is using is "Isolation" due to Covid causing people to isolate. We will be accepting ideas until February 5th. The committee will then decide and let all of you know so you can get started on your paintings. If we keep our works small or medium sized we should have room for everyone to hang a painting. Please check out <https://www.epl.ca/capital-city-art/> to get more information on the gallery space. Send your ideas to rheajansen@shaw.ca The following art club members are on the committee: Rhea Jansen, Marge Somkuti, Jenny Rodrigue, Seraya Smit and Jani Galarneau.

Looking forward to receiving your ideas!

Rhea

Jake's Framing

10441 123 St, Edmonton, Alberta T5N 1N8 P: 780.426.4649 E: jake@jakesframing.com

Jake's Framing offers superior custom picture framing including museum-grade picture framing, specialized mat-cutting, canvas painting stretching, dry-mounting, and engraving.

*"I strive to provide the best customer service in the industry at a fair price.
Please give me a chance to frame your artwork and I promise you won't be disappointed."*

Jake Lewis *Owner of Jake's Framing since 1993*

BEFORE & AFTER

I WANTED TO SHOW everyone “before” and “after” photos of my wheelbarrow painting. This was critiqued last fall during our October meeting by our critic for that evening, Karen Bishop.

The changes are as follows:

- 1) more shade underneath window and flowers,
- 2) more shadow underneath wheelbarrow,
- 3) straighten out the bump in the wheelbarrow, and
- 4) add red flowers.

I appreciated this critique and produced a better painting because of it!

My inspiration came from a flower filled wheelbarrow whilst visiting Johnston Canyon last summer.

Jenny Rodrigue



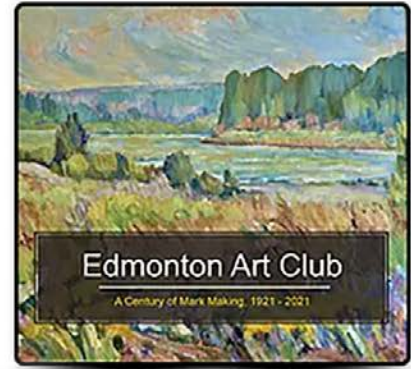
before



after



Merchandise Purchase



Commemorative Book \$50.00



EAC/AGA Poster \$5.00



**Mural Poster (double sided)
\$5.00**

to purchase, contact Seraya Smit
serayasmit@hotmail.com

Chic Woodwork & Design

Customizable Home Décor

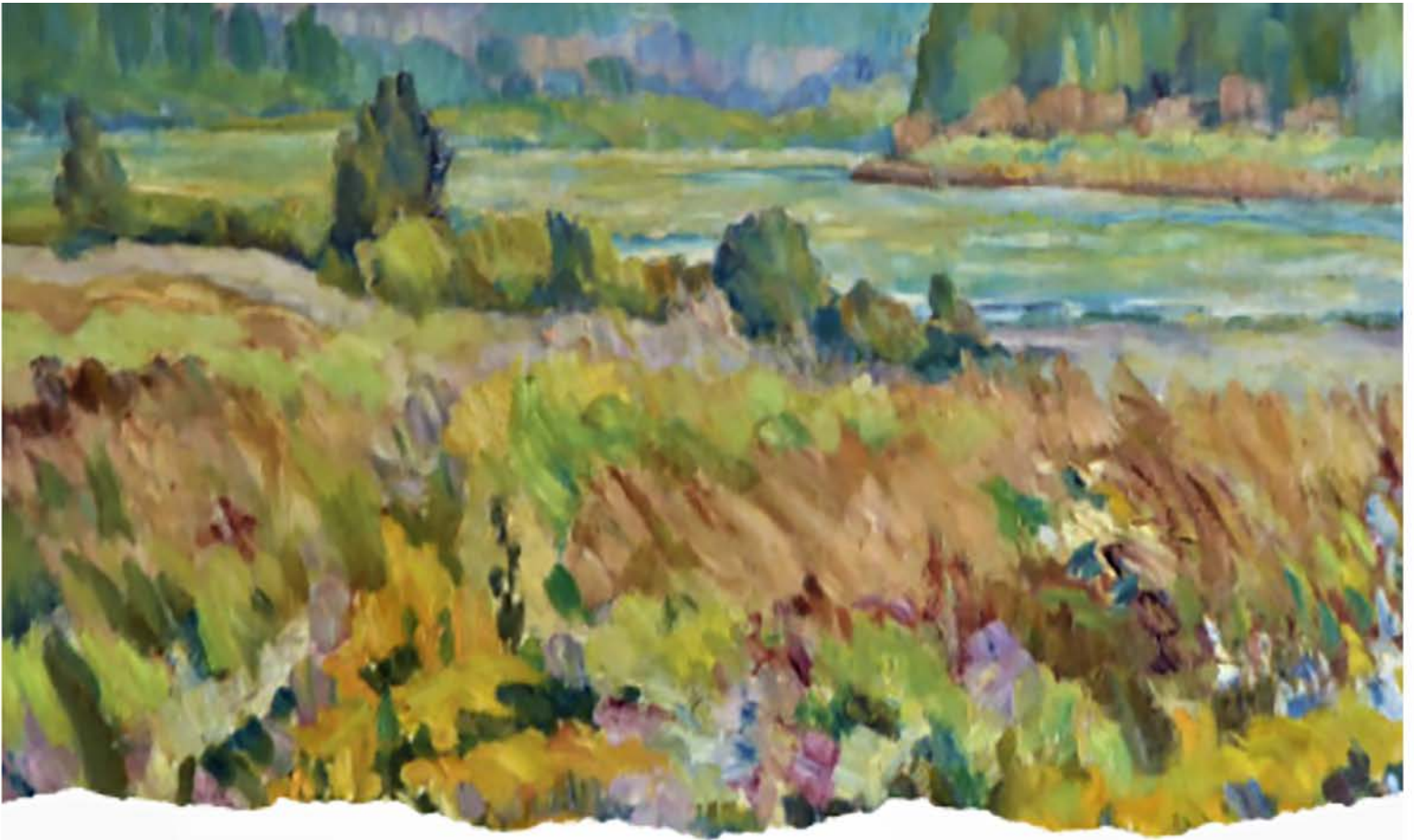
We are a fully customizable home décor company. We strive to create wood into pieces of art for your home!

Tammy Pelletier
Owner

Dylan Schriener
Co-founder

780-271-3936

chicwoodworkdesign@gmail.com
facebook/Chic Woodwork & Design
Edmonton / Spruce Grove / Stony Plain



Edmonton Art Club Celebrating 100 Years

1921 - 2021

The Edmonton Art Club is a professional association for visual artists with a mandate to promote the visual arts through exhibitions, special projects and arts advocacy. It is an environment of artists gathering to explore creativity.

Friendships are established, information is shared, opinions and ideas are exchanged in a supportive environment.



Artwork: J. Gordon Sinclair
"Tawatinaw Creek Country"

www.edmontonartclub.com

Reflections

ON OUR ANNIVERSARY YEAR

by Betty Dean

THE FINAL EVENT of our 100 Year Anniversary celebrations took place on January 20, 2022 at the Art Gallery of Alberta and gave me pause for reflection. Eight of our current members, one new member, and several members of the public came together to hear comments on the work presented from guest critic Emily Jan (www.emilyjan.com), an instructor in the Studio Arts department of MacEwan University. Attendees also provided feedback.

This was a wonderful final event for our anniversary year. When we initially began planning to celebrate we had no idea that we would be in the midst of a pandemic and how drastically that would impact our plans. After a great deal of discussion and brainstorming we identified three areas of focus: a mural, which could include all members in its production; a commemorative

book, featuring our history and profiles of current members; and an exhibition partnership with the Art Gallery of Alberta (AGA).

The Mural

Jani Galarneau and Seraya Smit lead us through the mural creation. The finished product was displayed across from the elevator doors of the AGA Community Gallery as part of the EAC members' show. Forty-four members painted the ninety-six 6" birch tiles in the mural, which was then finished with two coats of resin, framed, and prepared for hanging.

The Book

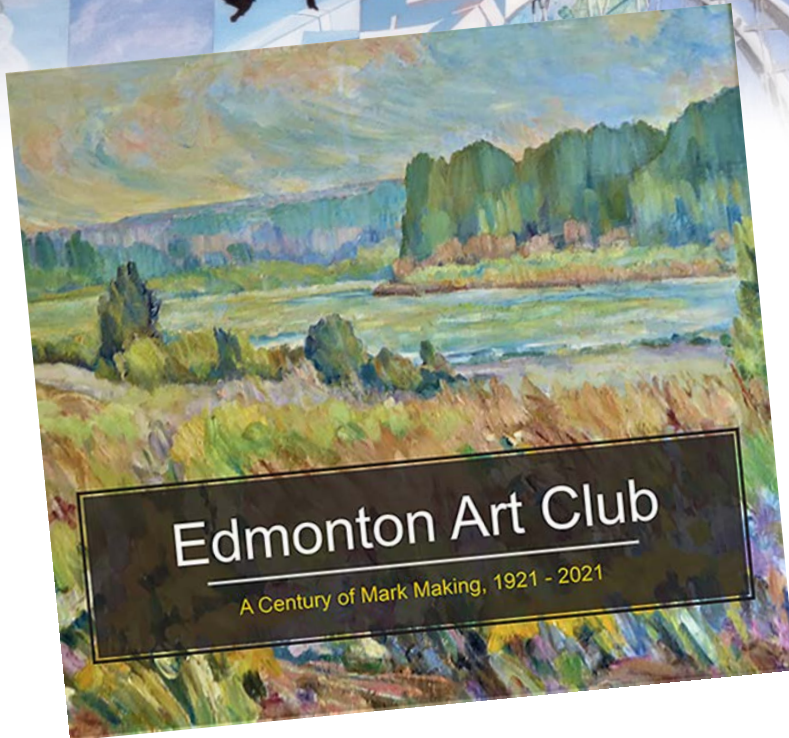
Our commemorative book, *Edmonton Art Club A Century of Mark Making 1921 – 2021*, was compiled by a book committee including Ted Widen, Seraya Smit, Betty Dean, Jani Galarneau, Rhea Jansen and Connie Clarke. Connie worked with ATB to develop a show and fundraising campaign and Ted compiled the pages and worked with College Copy to ensure successful printing. Content was drawn from our historical documents, well organized and maintained by Johanne Septou, our current club historian, and club

historians of the past. Our historical files were shared with the AGA as they developed the retrospective show. The book includes a brief history of the club, honouring our past, the remarkable vision of our fourteen founders, and some of our journey to today. A significant portion of the



EDMONTON ART CLUB

1921~2021



book is devoted to work by current members of the EAC, including a copy of the work each member selected for our AGA Community Gallery show. Also on each member's pages are photos of the tiles each painted for our mural, a photo of the artist and a brief biography. A photo of the mural we created is included, along with two legends detailing who painted which tiles. In our description of where we are today, we've included some details of our remarkable relationship with the Art Gallery of Alberta.

The AGA Exhibition Partnership

An initial show proposal had been sent to the AGA in 2017. We used that proposal as a starting point for discussions and were encouraged by their response. Curator and Collections Manager Danielle Siemens, with others, helped us finalize details of two shows:

- The Edmonton Art Club A Century of Mark Making 1921 – 2021, which ran from October 30, 2021 to January 23, 2022
- Making Art, Building Community: 100 Years of the Edmonton Art Club, which opened on November 6, 2021 and will close March 13, 2022.

Because of COVID closures, the opening of the shows was delayed several times. Once final opening dates were established, several special events were planned. The opening reception, held November 5, had limited attendance because of COVID restrictions. A curated members' tour of Making Art, Building Community was held on November 24, and our final event was the recent Critique Night.

We were pleased to receive a grant from the Edmonton Arts Council to support advertising and social media posts promoting our shows. Using the art of Andrew Bedingfield, Nola Bukvi, Linda Nelson and Aeris Osborne, several promotions were developed and will run until March 13, 2022 when the show closes.

2021 was a year to remember. It was a year to reflect upon and celebrate the foresight of the fourteen founding members, on the part we can each play to build our future, and on the very real benefits of the Edmonton Art Club.

your one resource for

art supplies

PAINT • BRUSHES • MATT BOARD • PENCILS
PENS • SKETCH PADS • CANVAS • EASELS
AND MUCH MORE!



Check Out our App!!
Download our app and access our vast selection of products anywhere



11116 - 120 street, edmonton, alberta
Ph: 780.455.7983 fx: 780.454.5204
e: info@deltaart.ca 1.888.455.1606

www.deltaart.ca



THE
**GILDED
RABBIT**

Art Supplies & Framing

20% Discount for EAC
Members

10% Discount for All
Students and Seniors

10104 149 Street
780.481.6950
thegildedrabbit.ca

 @gilded_rabbit

 thegildedrabbit



THANK YOU!

Thanks to Colours, Delta Art and Drafting Supplies, The Paint Spot, and the Strathcona Art Society for their ongoing support in helping to distribute the EAC newsletters!

And thanks to the following businesses who give generous discounts to EAC members!



11116 - 120 Street NW, Edmonton



West Edmonton Mall
8882, 170th St NW, Edmonton



10032 - 81 Ave NW, Edmonton



10660 - 105 St. NW, Edmonton
7359 - 104 St. NW, Edmonton



10441 123 Street NW, Edmonton



Art Supplies & Framing - Discounts for students, seniors, and art memberships

10104 149 Street 780.481.6950 thegildedrabbit.ca



Alberta
Foundation
for the Arts

We're grateful to the Alberta Foundation of the Arts for their continuing support.

As the primary arts resource and grant-funding body in Alberta, the Alberta Foundation for the Arts helps to unleash the potential of every artist through funding, arts promotion, and capacity-building. We provide behind-the-scenes support to artists and arts organizations, giving them the power to inspire minds, encourage expression, foster creativity, and contribute to Alberta's economy. From story time at local libraries to annual festivals on neighbourhood streets, the arts are active in your community. Albertans celebrate and support the arts as artists, volunteers, donors, and attendees at local arts events and activities. Experience, celebrate, and take pride in the arts—they're all around you!

Read more at affta.ab.ca/home.



CARFAC
ALBERTA

Visual Arts Alberta – CARFAC is a Provincial Arts Service Organization funded provincially and municipally that provide a communications hub between members of the visual arts community and the general public. Visual Arts Alberta – CARFAC is the affiliate for the national arts organization Canadian Artists Representation/le Front des artistes canadiens (CARFAC) in the province of Alberta.

CARFAC Alberta Office & Project Space:

3rd Fl., 10215-112 St., Edmonton, AB

Hours: Wednesday to Friday, 10–4pm and Saturday 12–4pm

t 780.421.1731 tf 1.866.421.1731

carfacalberta.com

general@carfacalberta.com

ANNUAL GENERAL MEETING MINUTES, JANUARY 22, 2022

recorded by Eleanor MacAllister

21 members and 3 guests. Quorum was not met. However all offices were filled by acclamation no proxies were required.

CALL TO ORDER

Sharon called the meeting to order at 7:00 pm

INTRODUCTION OF GUESTS / NEW MEMBERS

There were 3 guests: Michaela Rafferty, Lorie Meyer, and Kathleen Schleindl.

APPROVAL OF THE AGENDA

Moved by Jani, seconded by Jan, that the agenda be accepted as written.

APPROVAL OF THE DECEMBER MINUTES

Moved by Betty, seconded by Jani that the December minutes be accepted as written. All for, none against.

PRESIDENT'S ANNUAL REPORT (Sharon)

A summary of the Club's activities in 2021, our Centennial Year, was presented, month by month.

Exhibits at Propaganda and the Misericordia Hospital were continuing. The new website was up and running. 100 Year projects (the commemorative book, mural, and AGA exhibit) were proceeding. Planning for the ATB show was underway. However there were postponements and cancellations due to COVID and virtual options were explored. Meetings were conducted by Zoom except for September. By April, online critiques were held.

The ATB show was changed to an online format. A request to Alberta Culture Days for a grant to fund a Promenade and Paint Party was submitted but not accepted. Scholarships were awarded to Connie Clark, Rhea Jansen, and Seraya Smit. Open Studio resumed in June, but suspended later in the year.

A grant of \$8000 was received from the Edmonton Arts Council. \$3000 for workshops and \$5000 to hire a social media campaign manager from outside the Club.

During the summer we said goodbye to a long time member, Maureen Woolley.

In September, the commemorative book, mural poster, and AGA poster were on sale.

Member profiles were updated, yearly now.

Betty Dean accepted the role as social media campaign manager for the EAC grant. Artworks by Andrew Beddingfield, Nola Bukvi, Aeris Osborne, and Linda Nelson were selected for the billboard advertising campaign. The Contemporary Show is being held from October 30 to January 23 while the Retrospective Exhibit is being held

from November 6 to March 13. A personal tour of the retrospective exhibit was held for members. A call was sent to members for a volunteer to head the new Social Media Committee.

TREASURER'S ANNUAL REPORT (Connie)

The report was not presented as the meeting concluded before Connie was able to attend.

PRESIDENT'S AGM SPEECH (Sharon)

This is the AGM of the Edmonton Art Club. This annual meeting will be held in January for the election of officers and the reports of the President and Treasurer. Other reports may be presented as deemed necessary by the executive. Unless authorized at any meeting no officer or member shall receive any remuneration for work done for this organization. Elections of officers shall be by nomination at the December meeting as required. Such term of office shall be for two years. No officer shall be eligible for more than two consecutive terms in the same office except for the Treasurer who at the request of the executive can continue for a determined time. Election of officers is a mandate of the Past President. Our Past President is Rhea Jansen and she will take over at this time and I will take my leave. Thank you very much.

ELECTION OF NEW EXECUTIVE (Rhea)

The Executive members were acclaimed as submitted.
President. Seraya Smit
Vice President. Jani Galarneau
Past President. Rhea Jansen
Treasurer. Penny Lamnek
Recording Secretary. Eleanor MacAllister (acting)
Eleanor will continue as Recording Secretary only until COVID-19 restrictions on in-person meetings are lifted.

NEW PRESIDENT'S SPEECH AND ANNOUNCEMENTS (Seraya)

We are the custodians of the historical significance of the Edmonton Art Club. The transition from Vice President to President should be seamless. Mentorship is an important part of the Club. The success of our Club is based on the commitment, loyalty, and volunteerism of our members.

- AGA Show. The artworks will be retrieved by the committee and taken to Seraya's house, after which an email will be sent to members with pick up options.
- Commemorative books and posters are still available for purchase. Contact Seraya or order from website.
- Suzanne Northcott workshop is scheduled for April.
- The Workshop Committee has gathered the results from

MEETING MINUTES FROM JANUARY 22, 2022 (continued)

the survey and are moving forward.

- Website. The website has been streamlined in a number of areas. The blog is updated monthly and uploaded to the Facebook page. Statistics for 2020 were impressive.

NEW VICE PRESIDENT'S WELCOME SPEECH (Jani)

Thank you to the previous Executive during the challenging times. Mentorship is important to me in fulfilling this position. I believe in accountability and clarity to the membership and have reached out to other members to act as mentors to me. COVID is still with us and I am looking into the options available to us. I am looking forward to working with the Edmonton Art Club in this position.

I am currently in contact with SNAP and the Edmonton Sculptors Society regarding workshops funded by the grant.

NEWSLETTER

January 20 is the deadline for the next newsletter.

OTHER BUSINESS

• *Marketing and Social Media (Betty)*

The Edmonton Arts Council grant included \$5000 for promotion of the AGA exhibit on social media. The contract was awarded to Bottom Line Productions. A cheat sheet was provided to the Club for Facebook and Instagram.

Jasmin has agreed to head the new Social Media committee. She plans to schedule posts for Tuesdays, starting with The Artist of the Week. An email will be sent with 10 questions for the members. Their answers, website, and up to 3 pictures will be in their post.

Jani is setting up workshops as per the Edmonton Arts Council grant. They will be open to the public, recommended cost is \$10. The purpose is to expand expertise and attract new members.

Open Studio will reopen on January 25.

• *EPL Show (Rhea)*

The show will be from July through September at the Downtown Milner Library. Approximately 25 medium sized paintings can be accommodated. Check EPL - Capital City Art - Gallery Space Information for more information.

Rhea, Marge, Jenny, Seraya, and Jani will form the committee.

Ideas for a theme are to be forwarded to Rhea for consideration.

• *Critique Photos and the Newsletter (Eleanor)*

No change will be made to the critique photos and comments in the newsletter. If anyone is concerned about the publishing of a work in progress, they are to contact Rob directly.

Members are encouraged to submit articles about their artwork, adding comments such as the story behind the piece, how the artwork was changed because of the critique with before and after photos, how the critique helped the artist in other works, etc. This would show the community the value of critiques by a working artist and add more content to the newsletter.

Questions:

Where should e-transfers be sent?

edmartclub.treasurer@gmail.com is the email address to be used.

ATTENDANCE

21 members attended.

Betty will forward the names of members submitting pictures to the AGA critique so they are recorded in the Yes/No spreadsheet.

MOTION TO ADJOURN

The meeting was adjourned at 8:02 pm

President Remarks

I'm so pleased to have been elected as President of the Edmonton Art Club. It's no secret that it is my belief that we are the custodians of preserving and safeguarding the historical significance of the Edmonton Art Club, particularly now as we are ushering it into a technological and modern age. I also believe that defending the past is as important as embracing change.

I look forward being part of the team that ushers in the next adventure of the Edmonton Art Club.

Seraya Smit

President

Website What's New

MEMBERS' ONLY UPDATE

- Streamlined Landing Page
- Resource Directory
- What Updates Have I Missed
- Calendar

UPDATE



We are sorry to note that Sharon Bongers is leaving our club. We greatly appreciate all the work she did for the benefit of our group while she was president for the last two years and before that as a regular member. She was our critique writer for at least four years and put in many hours of work for the ACACA Northern Zone Show in 2019. Thank you for your service, Sharon. We will miss you! Best wishes as you continue on your path as a successful artist!

Rhea Jansen
Past President

111 Countries

639 Cities Worldwide

4,336 Users

VIEW YOUR WEBSITE STATS
January 1 to December 31, 2021

A NOTE TO MEMBERS REGARDING ADVERTISING IN YOUR NEWSLETTER...

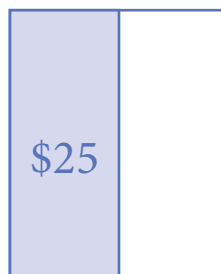
In order to help cover the circulation costs for our newsletter, paid advertising relevant to any artistic activities is being sought from artist groups, suppliers, and individuals. Rates on a per insertion basis are indicated in the page templates (pictured below). Please refer to these for sizes and shapes relative to the printed area of a newsletter page.



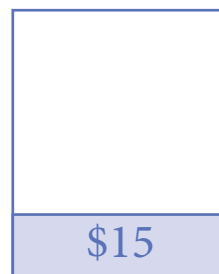
full page



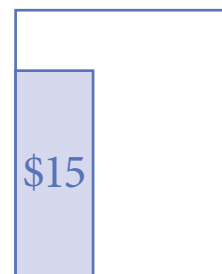
half page horizontal...



and vertical



quarter page horizontal...



and vertical

Important Notice Regarding Liability and Insurance

As per EAC Policies:

- As a condition of entering the show, participants agree that the EAC will not be held liable for damage, loss or theft of their artwork.
 - Participants shall be responsible for obtaining adequate insurance coverage for their art work.
- Insurance purchased for EAC is liability only, and does not cover personal items or art work.

Edmonton Art Club Executive and Other Committees 2021

Position	Name	Contact Information	
EXECUTIVE COMMITTEE MEMBERS			
President	Seraya Smit	serayasmit@hotmail.com	780 953-8919
Vice President	Jani Galarneau	jgalarneau@live.ca	780 994-9210
Past President	Rhea Jansen	rheajansen@shaw.ca	780 242-6153
Treasurer	Penny Lamnek	hans.lamnek@outlook.com	780 689-2410
Correspondence Secretary			
Recording Secretary	Eleanor MacAllister*	emaca418@gmail.com	780 886-3186
OTHER COMMITTEE MEMBERS			
Critic Organizer	Ada Wong	artsinabox@gmail.com	780 434-3642
Critique Writer	Vacant		
Critique Photographer	Vacant		
Grants Committee	Penny Lamnek	hans.lamnek@outlook.com	780 689-2410
	Andrew Bedingfield	bedingfield@email.com	780 901-2431
Historian	Johanne Septou	rseptou@telus.net	780 437-2504
Membership Committee	Jan Fraser	janfraserart@gmail.com	780 435-7525
	Marge Somkuti	somkutimarge@hotmail.com	780 953-3260
Newsletter Producer / Editor	Rob Guetre	rsguetre@gmail.com	780 468-4009
Newsletter Contributors	Betty Dean	marydean@telus.net	780 466-9152
	Ted Widen	twiden@gmail.com	587 497-2262

*Eleanor will act as recording secretary for Zoom meetings only. Frances Hessels to take over once we resume in person meetings.



What my friends think I do.



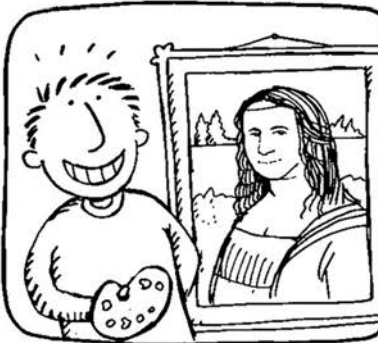
What my mom thought I did.



What the general population thinks.



What critics think I do.



What I think I do.



Reality.