

EST. 1921
EDMONTON ART CLUB
edmontonartclub.com



in this issue...	
critiques	pages 2-3
before and after	page 6
reflections	pages 8-9
our sponsors	page 11
members only	
AGM meeting minutes	page 12-13
committee phone list	page 15
cover: "River Valley" photo by Rob Guetre	



Alberta
Foundation
for the Arts



Emily Jan, our critic

EMILY JAN CREATES intricately crafted, hyper-realistic installations of found objects inhabited by both handmade and found flora and fauna.

As a writer and illustrator, Jan creates artist's books that amalgamate the lived research of a semi-nomadic life into works that engage broader concepts such as the circularity of time, the richness of biological and cultural diversity, and the finitude of the planet. Her subject matter ranges in scale from the vast landscapes of the Alaska Range to the minute details of the museum specimen.

In this age of mass extinctions and climate change, the importance of being able to envision places we may never personally see, to hold space for them in our minds and in our hearts, is ever greater. To this end, the work both sculptural and literary seeks to transport some of that distant experience to the viewer – to stretch the boundaries of our collective imaginings in order to encompass the unseen, to learn to love the unknown as well as the familiar, and ultimately to strive to weave all these strands into a larger narrative about what it means to be a human living in a world roiling with turmoil and catastrophe but yet which is still mysterious and beautiful.

adapted from <https://emilyjan.com/>



JANI GALARNEAU

24 x 36 Oil "The Arrival" Dracula #1
Theatrical, very atmospheric, sense of mystery. Many layers in the mist, green is effective and creates suspense. Purple is wonderful and definitely not Disney. Strange, captivating glow from the red underpainting. Do this in the rest of the series. Intrigue by the shadowy figure is uncanny, slightly disturbing. Amazing clouds, moon is perfect. Not sure why the mist / clouds change colour from purple to gray, may need more transition. Great composition. This is a great series that I hope continues. Really like the size of the piece. Reminds me of Jim Davies, love the mood and great capture of anxiety.



DONNA CHAMBERLAND

Beautifully realized. Successful layering of colors shows the contrast between old grass and new blossoms. This captures the season and evokes spring. Exceptional use of shading; beautifully rendered. The flowers pop (yet the painting itself is calming). The subject is very well placed in the piece, which adds flow to the image. The detail in the background really highlights the beauty of the flowers. The hues are lovely – mild yet fresh. This painting makes me mad! I tried crocuses and they were nowhere near the high quality of this work. Thanks for the inspiration!



◀ **FRANCES HESSELS**

The painting is sensitive and captures the impishness of the boy. The background is soft and loose and puts emphasis on the child. The object, under which he is peering, should have more colour or texture.

CRITIQUES



SERAYA SMIT

“The Giant Steps, Paradise Island, Lake Louise”

Good sense of space and use of colours. I can hear the roar of the water and feel the spray. I like its transparency in certain places. There is dynamic movement here, the flow of water is realistic and ties well with the landscape. Good combination of soft and hard edges. The midground trees with their soft edges unites the background and foreground. Good gestural quality. The saturated colours of the rocks suits them. I like the warmth under the water. Overall, good use of colours, the orange colour gives the rocks a deep richness. Rocks to left could have a little added reflection to them.



NOLA BUKVI

There is a traditional feel to this painting. Great use of colour, with the red structure and the cardinal. Wonderful composition. The shadows and texture in the woods brings balance. Take it to another level, something still needed behind the trees to bring the eye back.



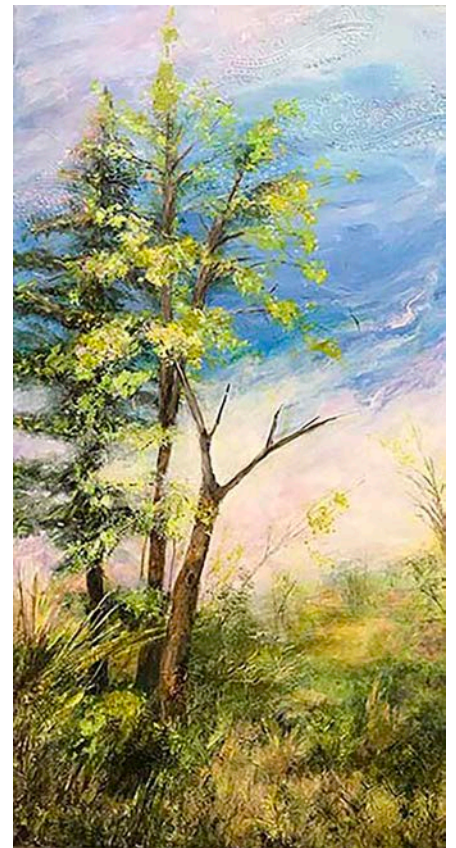
PENNY LAMNEK

[no notes available]



RHEA JANSEN

An experimental piece. Great texture and lush colours. The lights and darks create a lovely depth. The right side is less interesting than the left side and needs more colour variety, movement and contrast to balance the piece.



BETTY DEAN

12 x 24 mixed media “Spring”
A light, airy piece with good use of colour. Textures add interest and mood. I like the way the sides are handled, good composition. I would suggest you work on the dead tree.





Suzanne Northcott

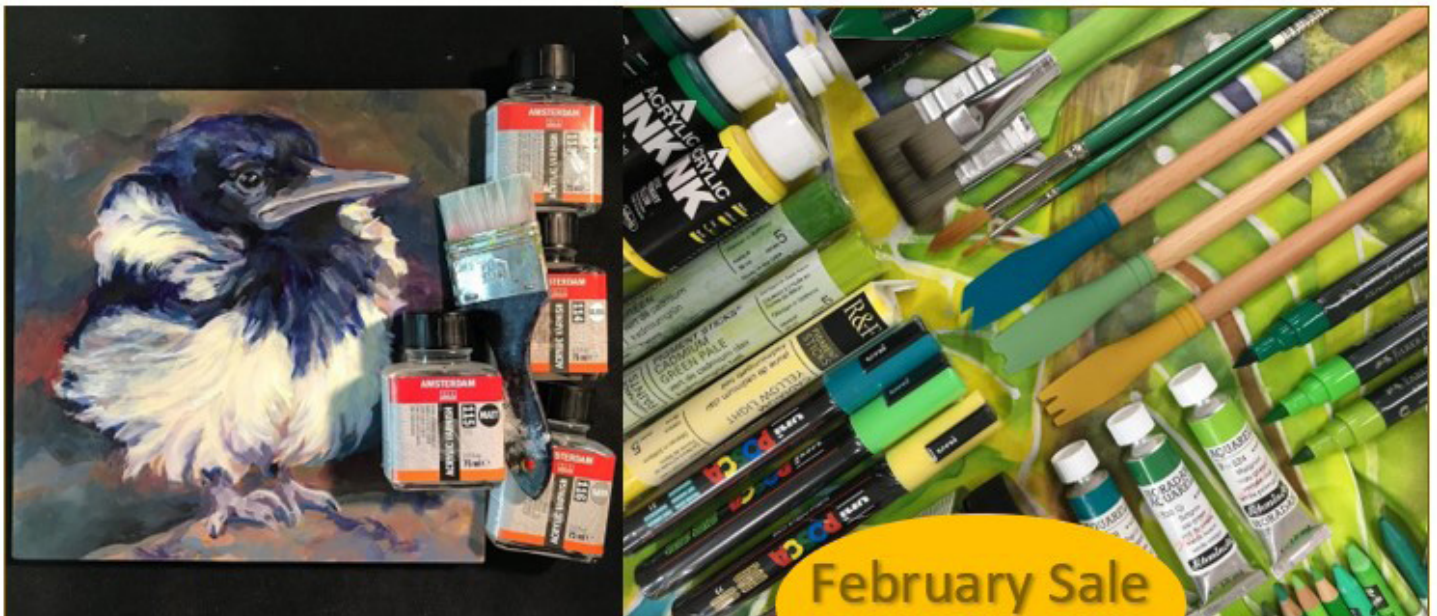
Acrylic and Mixed Media

Location: TBD

Friday, April 29 to Sunday, May 1, 2022

9:00am to 4:00pm
\$375

This workshop format will lean on individual instruction and will also include lecture, discussion, and demonstration of particular techniques, including mark-making and composition, building beautiful surfaces, brushwork, figure/ground relationships, and personal expression. Artists may choose to integrate drawing media or image transfer.



February Sale
SAVE 10% - 50%



GALLERY

Tips on varnishing can be found on our **YouTube Channel** and **blog posts** on our website.

ART SUPPLIES

**10032 81 AVE
EDMONTON AB**

PAINTSPOT.CA

ART CLASSES



BEGINNING FEB 5TH

**THE LOFT ART GALLERY & GIFT GALLERY
OF THE ART SOCIETY OF STRATHCONA COUNTY
IS OPEN!**

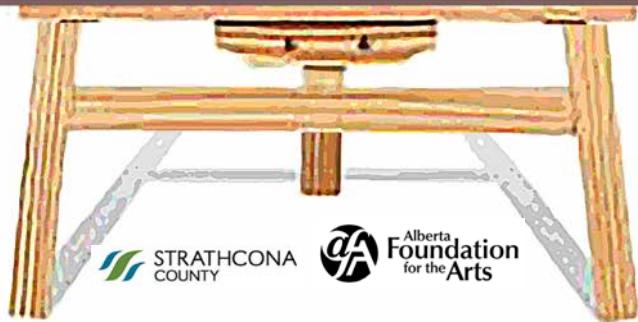
Saturdays & Sundays from 12 noon to 4 pm

at the Ottewell Centre (the Red Barn),
590 Broadmoor Blvd, Sherwood Park

SOLO ARTIST FOR FEBRUARY IS STEPHANIE LANE

***New beautiful artist-made gifts and artwork
from member artists in the Gift Gallery!***

Support your local artists with a visit to the Loft
www.artstrathcona.com or artsoc@telus.net



HELP NEEDED!

We need ideas for a suitable theme for our upcoming show at the Milner Library.

We are very fortunate to be asked to display our artwork at this beautiful venue for July, August and September of 2022. The current theme EPL is using is "Isolation" due to Covid causing people to isolate. We will be accepting ideas until February 5th. The committee will then decide and let all of you know so you can get started on your paintings. If we keep our works small or medium sized we should have room for everyone to hang a painting. Please check out <https://www.epl.ca/capital-city-art/> to get more information on the gallery space. Send your ideas to rheajansen@shaw.ca The following art club members are on the committee: Rhea Jansen, Marge Somkuti, Jenny Rodrigue, Seraya Smit and Jani Galarneau. Looking forward to receiving your ideas!

Rhea

Jake's Framing

10441 123 St, Edmonton, Alberta T5N 1N8 P: 780.426.4649 E: jake@jakesframing.com

Jake's Framing offers superior custom picture framing including museum-grade picture framing, specialized mat-cutting, canvas painting stretching, dry-mounting, and engraving.

*"I strive to provide the best customer service in the industry at a fair price.
Please give me a chance to frame your artwork and I promise you won't be disappointed."*

Jake Lewis *Owner of Jake's Framing since 1993*

BEFORE & AFTER

I WANTED TO SHOW everyone “before” and “after” photos of my wheelbarrow painting. This was critiqued last fall during our October meeting by our critic for that evening, Karen Bishop.

The changes are as follows:

- 1) more shade underneath window and flowers,
- 2) more shadow underneath wheelbarrow,
- 3) straighten out the bump in the wheelbarrow, and
- 4) add red flowers.

I appreciated this critique and produced a better painting because of it!

My inspiration came from a flower filled wheelbarrow whilst visiting Johnston Canyon last summer.

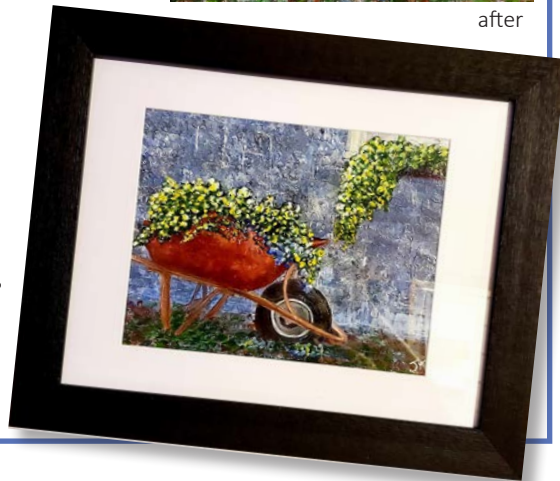
Jenny Rodrigue



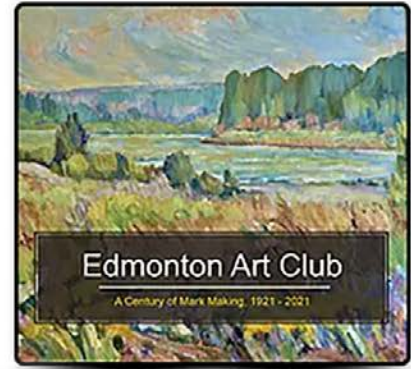
before



after



Merchandise Purchase



Commemorative Book \$50.00



EAC/AGA Poster \$5.00



**Mural Poster (double sided)
\$5.00**

to purchase, contact Seraya Smit
serayasmit@hotmail.com

Chic Woodwork & Design

Customizable Home Décor

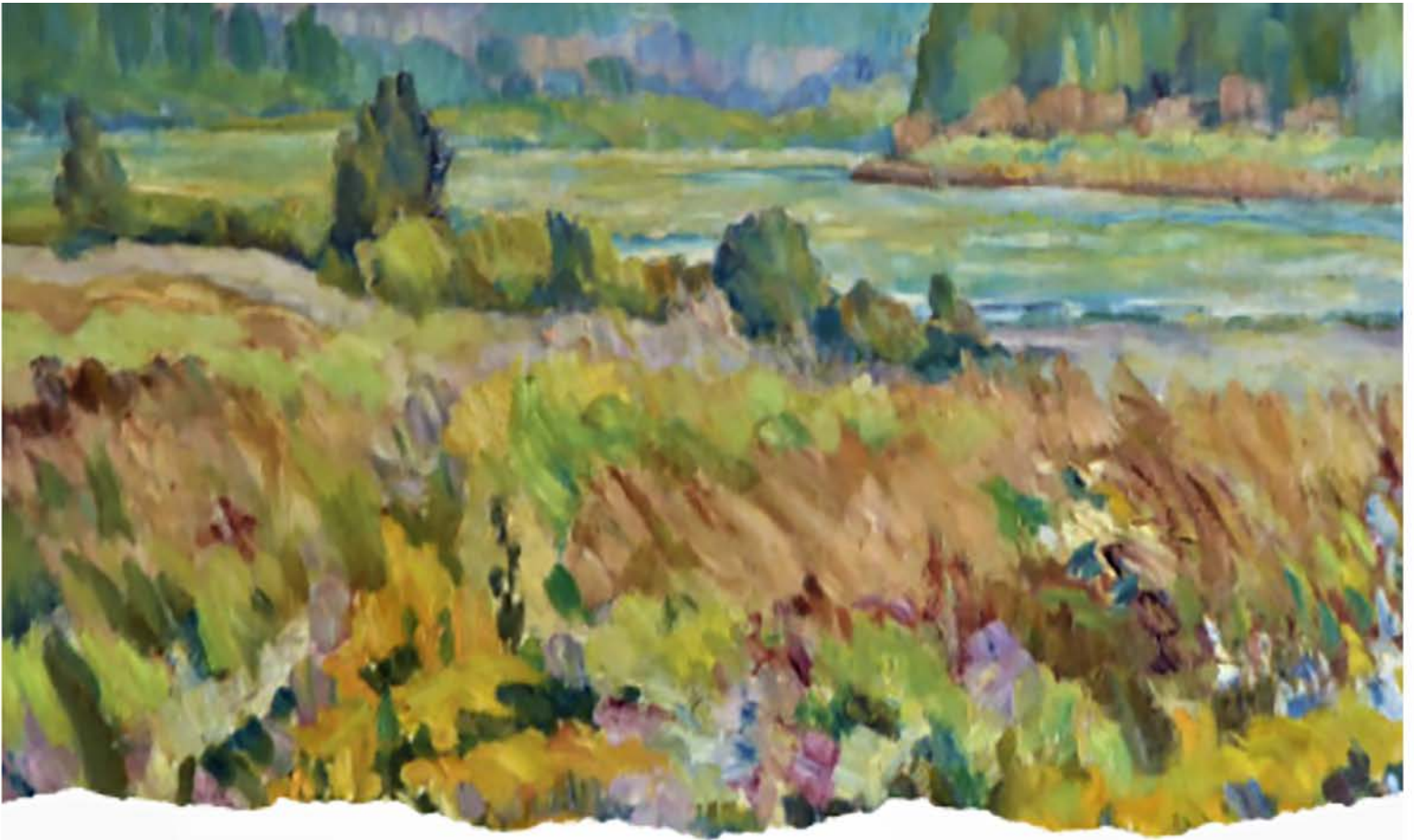
We are a fully customizable home décor company. We strive to create wood into pieces of art for your home!

Tammy Pelletier
Owner

Dylan Schriener
Co-founder

780-271-3936

chicwoodworkdesign@gmail.com
facebook/Chic Woodwork & Design
Edmonton / Spruce Grove / Stony Plain



Edmonton Art Club Celebrating 100 Years

1921 - 2021

The Edmonton Art Club is a professional association for visual artists with a mandate to promote the visual arts through exhibitions, special projects and arts advocacy. It is an environment of artists gathering to explore creativity.

Friendships are established, information is shared, opinions and ideas are exchanged in a supportive environment.



Artwork: J. Gordon Sinclair
"Tawatinaw Creek Country"

www.edmontonartclub.com

Reflections

ON OUR ANNIVERSARY YEAR

by Betty Dean

THE FINAL EVENT of our 100 Year Anniversary celebrations took place on January 20, 2022 at the Art Gallery of Alberta and gave me pause for reflection. Eight of our current members, one new member, and several members of the public came together to hear comments on the work presented from guest critic Emily Jan (www.emilyjan.com), an instructor in the Studio Arts department of MacEwan University. Attendees also provided feedback.

This was a wonderful final event for our anniversary year. When we initially began planning to celebrate we had no idea that we would be in the midst of a pandemic and how drastically that would impact our plans. After a great deal of discussion and brainstorming we identified three areas of focus: a mural, which could include all members in its production; a commemorative

book, featuring our history and profiles of current members; and an exhibition partnership with the Art Gallery of Alberta (AGA).

The Mural

Jani Galarneau and Seraya Smit lead us through the mural creation. The finished product was displayed across from the elevator doors of the AGA Community Gallery as part of the EAC members' show. Forty-four members painted the ninety-six 6" birch tiles in the mural, which was then finished with two coats of resin, framed, and prepared for hanging.

The Book

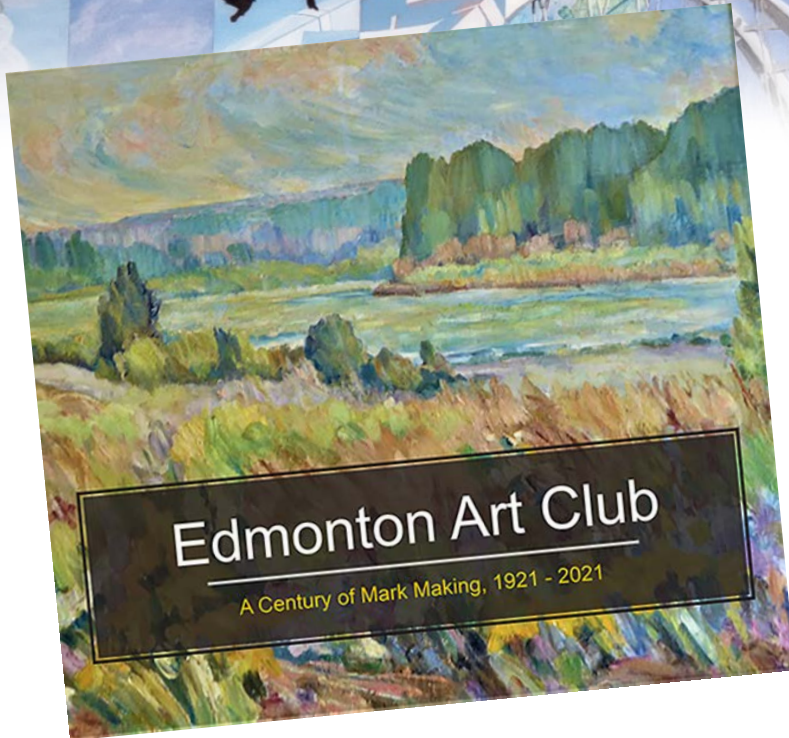
Our commemorative book, *Edmonton Art Club A Century of Mark Making 1921 – 2021*, was compiled by a book committee including Ted Widen, Seraya Smit, Betty Dean, Jani Galarneau, Rhea Jansen and Connie Clarke. Connie worked with ATB to develop a show and fundraising campaign and Ted compiled the pages and worked with College Copy to ensure successful printing. Content was drawn from our historical documents, well organized and maintained by Johanne Septou, our current club historian, and club

historians of the past. Our historical files were shared with the AGA as they developed the retrospective show. The book includes a brief history of the club, honouring our past, the remarkable vision of our fourteen founders, and some of our journey to today. A significant portion of the



EDMONTON ART CLUB

1921~2021



book is devoted to work by current members of the EAC, including a copy of the work each member selected for our AGA Community Gallery show. Also on each member's pages are photos of the tiles each painted for our mural, a photo of the artist and a brief biography. A photo of the mural we created is included, along with two legends detailing who painted which tiles. In our description of where we are today, we've included some details of our remarkable relationship with the Art Gallery of Alberta.

The AGA Exhibition Partnership

An initial show proposal had been sent to the AGA in 2017. We used that proposal as a starting point for discussions and were encouraged by their response. Curator and Collections Manager Danielle Siemens, with others, helped us finalize details of two shows:

- The Edmonton Art Club A Century of Mark Making 1921 – 2021, which ran from October 30, 2021 to January 23, 2022
- Making Art, Building Community: 100 Years of the Edmonton Art Club, which opened on November 6, 2021 and will close March 13, 2022.

Because of COVID closures, the opening of the shows was delayed several times. Once final opening dates were established, several special events were planned. The opening reception, held November 5, had limited attendance because of COVID restrictions. A curated members' tour of Making Art, Building Community was held on November 24, and our final event was the recent Critique Night.

We were pleased to receive a grant from the Edmonton Arts Council to support advertising and social media posts promoting our shows. Using the art of Andrew Bedingfield, Nola Bukvi, Linda Nelson and Aeris Osborne, several promotions were developed and will run until March 13, 2022 when the show closes.

2021 was a year to remember. It was a year to reflect upon and celebrate the foresight of the fourteen founding members, on the part we can each play to build our future, and on the very real benefits of the Edmonton Art Club.

your one resource for

art supplies

PAINT • BRUSHES • MATT BOARD • PENCILS
PENS • SKETCH PADS • CANVAS • EASELS
AND MUCH MORE!



Check Out our App!!
Download our app and access our vast selection of products anywhere



11116 - 120 street, edmonton, alberta
Ph: 780.455.7983 fx: 780.454.5204
e: info@deltaart.ca 1.888.455.1606

www.deltaart.ca



THE GILDED RABBIT

Art Supplies & Framing

20% Discount for EAC
Members

10% Discount for All
Students and Seniors

10104 149 Street
780.481.6950
thegildedrabbit.ca

 @gilded_rabbit

 thegildedrabbit



THANK YOU!

Thanks to Colours, Delta Art and Drafting Supplies, The Paint Spot, and the Strathcona Art Society for their ongoing support in helping to distribute the EAC newsletters!

And thanks to the following businesses who give generous discounts to EAC members!



11116 - 120 Street NW, Edmonton



West Edmonton Mall
8882, 170th St NW, Edmonton



10032 - 81 Ave NW, Edmonton



10660 - 105 St. NW, Edmonton
7359 - 104 St. NW, Edmonton



10441 123 Street NW, Edmonton



Art Supplies & Framing - Discounts for students, seniors, and art memberships

10104 149 Street 780.481.6950 thegildedrabbit.ca



Alberta
Foundation
for the Arts

We're grateful to the Alberta Foundation of the Arts for their continuing support.

As the primary arts resource and grant-funding body in Alberta, the Alberta Foundation for the Arts helps to unleash the potential of every artist through funding, arts promotion, and capacity-building. We provide behind-the-scenes support to artists and arts organizations, giving them the power to inspire minds, encourage expression, foster creativity, and contribute to Alberta's economy. From story time at local libraries to annual festivals on neighbourhood streets, the arts are active in your community. Albertans celebrate and support the arts as artists, volunteers, donors, and attendees at local arts events and activities. Experience, celebrate, and take pride in the arts—they're all around you!

Read more at affta.ab.ca/home.



CARFAC
ALBERTA

Visual Arts Alberta – CARFAC is a Provincial Arts Service Organization funded provincially and municipally that provide a communications hub between members of the visual arts community and the general public. Visual Arts Alberta – CARFAC is the affiliate for the national arts organization Canadian Artists Representation/le Front des artistes canadiens (CARFAC) in the province of Alberta.

CARFAC Alberta Office & Project Space:

3rd Fl., 10215-112 St., Edmonton, AB

Hours: Wednesday to Friday, 10–4pm and Saturday 12–4pm

t 780.421.1731 tf 1.866.421.1731

carfacalberta.com

general@carfacalberta.com