



EAC

EST. 1921
EDMONTON ART CLUB
edmontonartclub.com

in this issue...	
critiques	pages 3-5
the art of retirement	pages 6-7
our sponsors	page 13
members only meeting minutes	pages 15
committee phone list	page 17
cover photo: "pysanky"	



THE
EDMONTON ART CLUB
SHOW & SALE
IN SUPPORT OF
UKRAINE RELIEF EFFORTS

PROPAGANDA HAIR
10808 - 124 STREET NW
EDMONTON

TUESDAY, APRIL 5, 2022 to
SATURDAY, JUNE 4, 2022

A portion of all proceeds will be donated to
Ukraine relief efforts.



Alberta
Foundation
for the Arts



**About our critic,
Samantha Williams-
Chapelsky...**

Abstract landscape artist Samantha Williams-Chapelsky completed her Bachelor of Fine Arts Degree from the University of Alberta in 2009, with distinction, majoring in painting and art history.

Samantha has been exhibiting her art extensively for the past 15 years worldwide. Her paintings are included in numerous corporate and private collections and are represented in select commercial art galleries.

Samantha is the Golden Working Artist for the province of Alberta and Saskatchewan. She also works as an art instructor and lecturer, hosting workshops and sessions across Alberta.

...

As an abstract landscape painter, I have explored the prairies of Western Canada. This voyage has lured me down a rabbit hole to all manner of physical manifestations of paint that evoke texture, light, tone, and contrast.

I have a deep appreciation for the varied crops, the vertical lines, rows of plants that seem to follow the curves and shapes of the land itself. I am fascinated by the resolved tenacity of certain crops to grow and persist in the harsh winters and the hot bleaching of a summer sun. The slow deliberate action of planting seed by seed, row by row, thread by thread, plant by plant creates the narrative of my painting.

adapted from
samanthawilliamschapelsky.com/



ADA WONG

Beautiful lights and shadows. I really like the purple and yellow combinations. May need some more grasses in front.



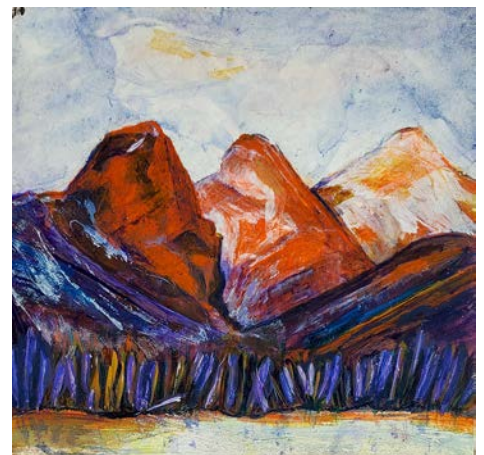
DIANA PANIZZON

A lovely composition with beautifully painted figures. Add texture in the foreground. The sky can be more dramatic by blocking in with ultra-marine blue mixed with white.



RHEA JANSEN

Lovely composition. I like the yellow. Careful with the black. Glazing the black with blue is suggested to enliven it. Love the combination of colours.



SERAYA SMIT

Love the simplicity of this small painting. The colours are well chosen. Strongly suggest doing several of these small paintings and you'll love the result. Your perspective is good.



◀ **ANDREW BEDINGFIELD**

I see the mid-century architectural design influence. Keep the green. The use of two primaries with one secondary colour works well. A blue background reflection might help. Textures are good and perhaps some in the half moon. A very fun painting.



JENNY RODRIGUE

Lovely flower. A use of azo yellow or gold is suggested as a glaze on the green to warm this painting. Also suggest losing the signature as this is a smaller painting and it should be signed on the back.



ROB GUETRE

Wonderful oil portrait. Good proportions in the face. A little reflection haze on the glasses using a stroke of zinc white would help. The fabric could be a little more realistic.



FRANCES HESSELS

Beautiful work! The hands could be simplified by using less brush strokes. Suggest you make hand studies by taking photos and practising with minimal brush strokes.



JANI GALARNEAU

A very intuitive piece! Effective with the display of colours used. An area of calmness underneath the raven will bring her out by using light yellow. Play with the volume of modelling paste.



LEONA OLAUSEN

Love this abstract. The effect of layering and scraping is noticeable. A glaze of dioxazine purple or dark blue on the black will make it look less dark. Nice and punchy, love the swirly lines.



DONNA CHAMBERLAIN

The background of this piece is beautiful, and the horizontal lines are well placed. The foreground needs to be brighter and a bit more shadow would help outline the trees in the foreground.



MYRNA WILKINSON

A beautiful forest scene. Mountains are a challenge and need to be simplified to push them back and give a sense of distance. Add deeper and lighter values for tonal change in the colour of the water.

RICHARD ST. AMANT

Very nice use of gouache. I love all the various greens. Don't be afraid to extend a tree to branch or two off the page to create more interest.

◀ **JOANNE SEPTOU**

Beautiful cat portrait. Suggest using a fine acrylic pen to break the fur outline into the background. Its face is lovely, the eyes reflect well. Straighten the horizontal line in the front.



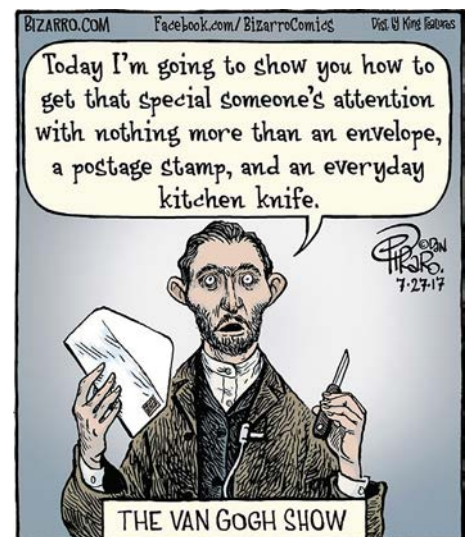
NOLA BUKVI

Beautifully painted. Blue could be glazed into the mountains and the horizon line needs to be straightened. Spectacular work, challenging subject.



JANET FRASER

Love the pop of ultramarine blue in the sky making these two pieces really stand out. Great choice of colours and fabric. Keep the sky flat and introduce more colour in the foreground such as bright pink.



THE ART OF RETIREMENT



Jan

I HAD A PLAN for my retirement. I wanted to be immersed in my art after years of wearing my teacher-administrator hat. Then the time came. I retired.

My first art mentor had been Murray MacDonald, my grand uncle, a well-known watercolour master, former teacher, and Supervisor of Art with Edmonton Public Schools. He gave me private lessons from his home



Murray MacDonald: *West of Calgary* — Watercolour



Jan Fraser: *Into the Wind* — Acrylic, In response to weather and atmosphere in Alberta

Jan Fraser and Betty Dean

starting in 1980. Three generations took part in watercolour lessons in Murray's old frame house in Garneau: Murray, my Aunt Edythe Markstad, and me. Murray gave us an assignment at each Sunday session, such as an atmospheric poem to respond to in paint. He gently critiqued our work and told stories. He demonstrated loosely and expected us to do the same, and in 1981 we held our first three generation show.

Murray also taught at the Banff School of Fine Art in the late 1950s with members of the Group of Seven, including A.Y. Jackson. Jackson had the same philosophy of teaching; Murray told us of a time when one of Jackson's students was laboriously painting every tree on the side of a mountain on her canvas. It was taking forever. Jackson put his large thumb onto her oil paint and smushed her trees together. That upset her — until, of course, she saw how much it improved the work!

Upon retiring, I was painting by myself and felt a huge gap in my learning. Murray had passed away, and I missed him. I also missed the buzz of school activity and sharing with staff, students, and parents — but I was so grateful for my retirement pension! A year into retirement, I went for lunch with Betty Dean, a dear friend and former principal of mine, for "Retirement Lessons." Betty is an active and popular artist in her own retirement. When she persuaded me to join the Edmonton Art Club (EAC), the threads started to come together.



Betty

I ALSO HAD PLANS for my retirement. I too, wanted to immerse myself in art. As a university student, I had majored in fine arts, but as my career progressed, my painting fell by the wayside. Once retired, I started to register in local workshops and discovered that several of my retired teacher friends were also closet artists. In fact, several of them were also members of the EAC, and as I became more engaged in painting, I too was invited to join — I was thrilled! I had often attended their shows, especially in malls, and had gazed at the paintings with awe, dreaming of being able to join the club!

The EAC gave me the sense of community I had been missing since retirement. Art and new friends were often my reasons for getting up in the morning.

When Jan and I re-connected, what started as a conversation about retirement became a conversation about art. I knew Jan was an amazing artist, and in fact I had purchased one of her paintings several years prior. What I didn't know was her connection to Murray MacDonald; he too, was an artist I admired and whose work I saw as often as possible.

Through the club and our growing friendship, Jan and I shared ideas about art, retirement, and life. We both worked with others on the celebratory plans for the Edmonton Art Club 100 Year Anniversary last

continues next page

The Art of Retirement (continued)

year, and I learned what an important role Murray MacDonald, who joined the EAC in 1922, had played in the early years of the club. Through our conversations, I also learned of the role he had played in Jan's development as an artist and in the development of art instruction in schools. When he was Supervisor of Art for Edmonton Public Schools, he wanted children to get down on the floor and paint expressively on large paper — despite the mess! That kind of art experience was rare at the time, but Murray often said and firmly believed that "making art is democratic" — meaning that the work of every child should be displayed, not just what might be called the "best work." Murray changed the way art was taught in our city and our province and lived his belief that art is for everyone who wants to learn.



Betty Dean: Peace of Mind — Mixed Media

Jan Fraser continues to paint in a variety of media and to teach in Edmonton. "Be creative every day", she says, "and you have a reason to get up in the morning."

Betty Dean has been painting almost full time since retiring from a career with Edmonton Public Schools. Betty is a member of the Edmonton Art Club and hosts art groups and classes.

Article and Photos excerpted from <https://www.arta.net/wp-content/uploads/2018/06/2022-spring-newsviews.pdf>

April Sale
SAVE 20% - 30%

THE PAINT SPOT

Featuring
Holbein Water soluble oil
paints and mediums
on sale all April.

10032 81 AVE
EDMONTON AB

PAINTSPOT.CA

GALLERY ART SUPPLIES ART CLASSES



WORKSHOP

Suzanne Northcott

April 29 to May 1, 2022

To learn more and register:

www.edmontonartclub.com/workshops/Acrylic-and-Mixed-Media

Paverpol Insight
Free
March 23, 2022

Acrylic and Mixed Media
\$375
April 29 to Sunday, May 1, 2022

Mixed Media Madness
\$120
May 28 - 29 10:00am - 2pm

Paverpol Workshop
Members \$50 Non Members \$65
June 18, 2022

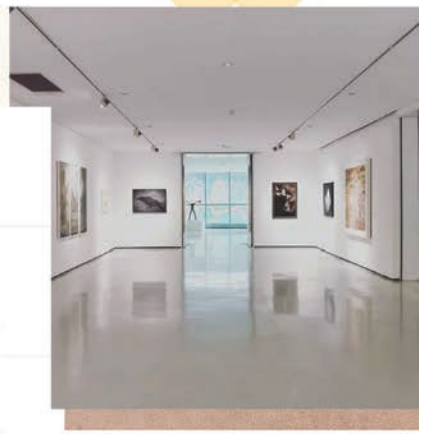
Clay Creation
Members \$50 Non Members \$65
September 10 and November 19

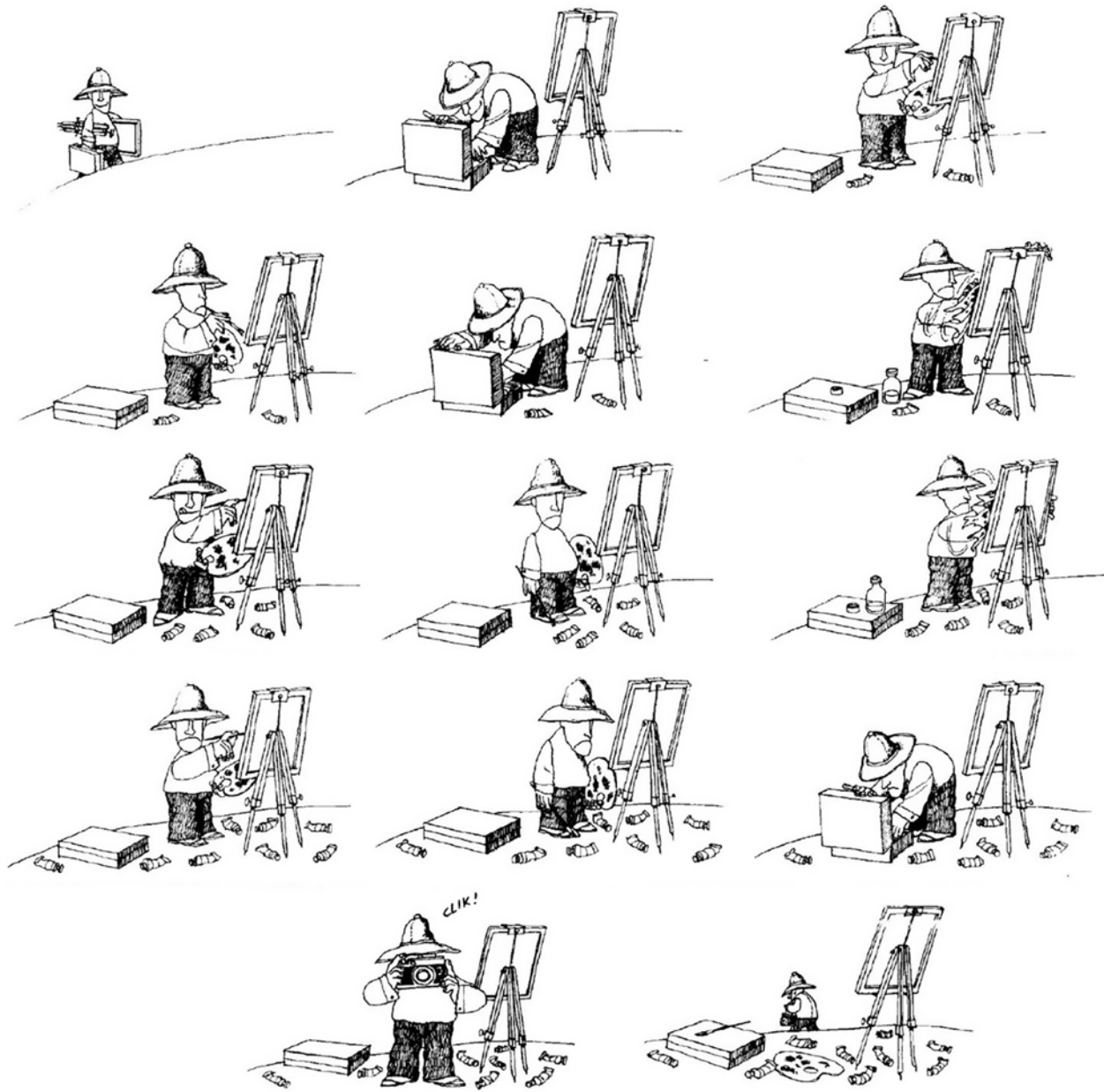
WORKSHOPS



Exhibits and Events

- 
04 Mon
Apr Expression of Creativity / Propaganda Hair Group
- 
03 Sun
Jul Bridges: Connecting Diversity / Stanley A. Milner Library
- 
14 Fri
Oct Autumn The Harvest Of Colours / The Orange Hub
- 
Coming
Soon Illuminating Edmonton / The Orange Hub





Jake's Framing

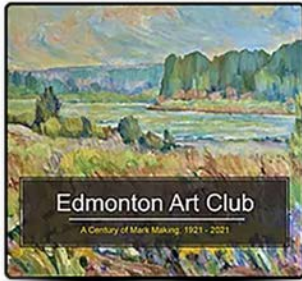
10441 123 St, Edmonton, Alberta T5N 1N8 P: 780.426.4649 E: jake@jakesframing.com

Jake's Framing offers superior custom picture framing including museum-grade picture framing, specialized mat-cutting, canvas painting stretching, dry-mounting, and engraving.

*"I strive to provide the best customer service in the industry at a fair price.
Please give me a chance to frame your artwork and I promise you won't be disappointed."*

Jake Lewis Owner of Jake's Framing since 1993

Merchandise Purchase



Commemorative Book \$50.00



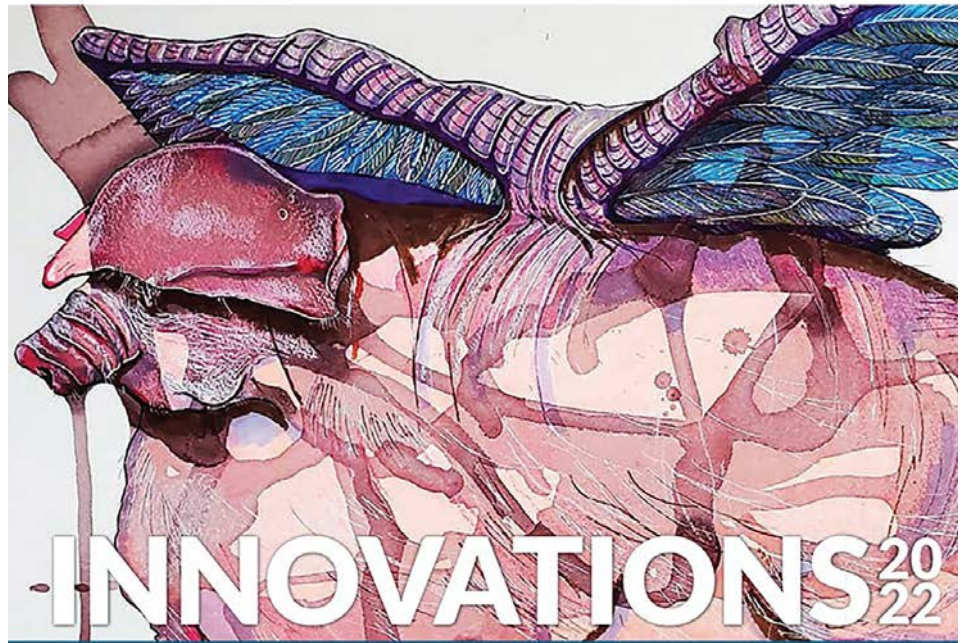
EAC/AGA Poster \$5.00



Mural Poster (double sided)
\$5.00

to purchase, contact Seraya Smit
serayasmit@hotmail.com

INTERNATIONAL SOCIETY OF EXPERIMENTAL ARTISTS



INNOVATIONS²⁰²²

CALL FOR SUBMISSIONS OPEN MARCH 1 - 31, 2022

31st ANNUAL INTERNATIONAL OPEN JURIED EXHIBITION

August 18 - October 1, 2022

Hosted by the Art Gallery of St. Albert, Alberta, Canada

OVER US\$14,000 IN PRIZES!



symposium.iseaartexhibit.org/inspire



Our Art Critics

February 2022



Campbell Wallace

March 2022



Samantha Williams-Chapelsky

April 2022



Randy Hayashi

May 2022



Jayne Willoughby

June 2022



Sharon Moore Foster

your one resource for

art supplies

PAINT • BRUSHES • MATT BOARD • PENCILS
PENS • SKETCH PADS • CANVAS • EASELS
AND MUCH MORE!



Check Out our App!!
Download our app and access our vast selection of products anywhere



11116 - 120 street, edmonton, alberta
Ph: 780.455.7983 fx: 780.454.5204
e: info@deltaart.ca 1.888.455.1606

www.deltaart.ca



THE
**GILDED
RABBIT**

Art Supplies & Framing

20% Discount for EAC
Members

10% Discount for All
Students and Seniors

10104 149 Street
780.481.6950
thegildedrabbit.ca

 @gilded_rabbit

 thegildedrabbit



DESIGNER DOORS

2 DAY WORKSHOP

WITH JANI GALARNEAU

SATURDAY & SUNDAY, APRIL 23 & 24

10:00 AM – 4:00 PM

\$160 + GST + SUPPLY LIST

CLASS LIMIT: 12 STUDENTS

Have you ever wanted a designer door in your house or anywhere special?

Here's a fun opportunity to learn the basics without the intimidation of a large door. We will work on a kitchen cabinet door as your template for something bigger!

Day 1: We talk about design and layout. What colour schemes will you be using? What types of paint and other mediums can we use? Can we do outside doors and is it different than inside? What are our options? How do we seal our artwork? We start on sketching our design and start on the background.

Day 2: Finish up our backgrounds and work on details. We talk about what inspired you to take this class. We talk about what details we would like to do and how to accomplish that. Do we want embellishments or are we happy with the design? Basically, a paint day and troubleshooting. We will talk about bigger projects and what we would like to accomplish after class. Finally, we show off our doors!



About the Instructor: Canadian artist Jani Galarneau is known for her infectious energy and a fierce passion for painting. Her innovation with mixed media is what she has excelled at. Currently her direction includes how to use 'garbage' or recycled items in her art. Jani's whimsical and colorful style is woven into all she produces. Jani receives outstanding responses from her students, who love her style!

To see more of Jani's work, check out her website and Instagram:

Website: janigalarneau.com

Instagram: [@janigalarneau](https://www.instagram.com/janigalarneau)

You bring:

1. Idea for your door
2. A kitchen cabinet door (find at a reuse centre) - prime your door before class
3. Acrylic paints
4. Pencil
5. Brushes in various sizes
6. You may bring your own selection of art supplies
7. Suitable art clothes, snack, drink, and your own PPE (mask, hand sanitizer)

You will receive a 20% discount on all art supplies from your registration until the end of the series!

THANK YOU!

Thanks to Colours, Delta Art and Drafting Supplies, The Paint Spot, and the Strathcona Art Society for their ongoing support in helping to distribute the EAC newsletters!

And thanks to the following businesses who give generous discounts to EAC members!



11116 - 120 Street NW, Edmonton



West Edmonton Mall
8882, 170th St NW, Edmonton



10032 - 81 Ave NW, Edmonton



10660 - 105 St. NW, Edmonton
7359 - 104 St. NW, Edmonton



10441 123 Street NW, Edmonton



Art Supplies & Framing - Discounts for students, seniors, and art memberships

10104 149 Street 780.481.6950 thegildedrabbit.ca



Alberta
Foundation
for the Arts

We're grateful to the Alberta Foundation of the Arts for their continuing support.

As the primary arts resource and grant-funding body in Alberta, the Alberta Foundation for the Arts helps to unleash the potential of every artist through funding, arts promotion, and capacity-building. We provide behind-the-scenes support to artists and arts organizations, giving them the power to inspire minds, encourage expression, foster creativity, and contribute to Alberta's economy. From story time at local libraries to annual festivals on neighbourhood streets, the arts are active in your community. Albertans celebrate and support the arts as artists, volunteers, donors, and attendees at local arts events and activities. Experience, celebrate, and take pride in the arts—they're all around you!

Read more at affta.ab.ca/home.



CARFAC
ALBERTA

Visual Arts Alberta – CARFAC is a Provincial Arts Service Organization funded provincially and municipally that provide a communications hub between members of the visual arts community and the general public. Visual Arts Alberta – CARFAC is the affiliate for the national arts organization Canadian Artists Representation/le Front des artistes canadiens (CARFAC) in the province of Alberta.

CARFAC Alberta Office & Project Space:

3rd Fl., 10215-112 St., Edmonton, AB

Hours: Wednesday to Friday, 10–4pm and Saturday 12–4pm

t 780.421.1731 tf 1.866.421.1731

carfacalberta.com

general@carfacalberta.com



Scholarships

The Edmonton Art Club offers two scholarship funds

Due Date: April 30

Scholarship application plus 4 high-resolution images to be submitted digitally to the Scholarship Committee (see below).

The Edmonton Art Club offers two scholarship funds to our members annually via an application process. The Card / Alling Scholarship and the Mildred Nelson Scholarship.

Card/Alling Scholarship is for studies in watercolour. Generally, two scholarships of \$2000.00 each are given annually.

Mildred Nelson Scholarship is for studies in mediums other than watercolour. Generally, one scholarship of \$1000.00 is given annually.

The eligibility criteria is outlined in questionnaire format within the application form. Should your qualifications meet the Scholarship criteria, we encourage you to submit your application to the Scholarship Committee!!! Scholarship Committee 2022 are Betty Dean and Rhea Jansen.

The application deadline is April 30. Members can make application every ten years per scholarship.



We're Back at The Orange Hub

In House Meeting April 14, 2022

Room 440, the Orange Hub

7:00 - 10pm

Doors open at 6:30



MEETING MINUTES, MARCH 10, 2022

recorded by Frances Hessels

CALL TO ORDER

Seraya called the meeting to order at 7:00 pm.

INTRODUCTION OF GUESTS / NEW MEMBERS

There were 5 guests: Mohamed Salayi, Francesca Songco, Lexi Zhu, Michaela Rafferty, Jen Komchak.

APPROVAL OF THE FEBRUARY MINUTES

Moved by Jan Fraser, seconded by Rhea Jansen that the February minutes be accepted as written. All for, none against.

PRESIDENT'S REPORT (Seraya Smit)

INTRODUCING NEW EXECUTIVE

Frances Hessels – recording secretary

Jenny Rodrigue – critique writer

Introducing new speech to text app to be used in conjunction with recording secretary and critique writer contribution.

ART GALLERY OF ALBERTA SHOW

Retrospective Show closes on March 13, historic files and documents will be returned to historian, Johanne Septou, in early April. Attempts to find a permanent home for the mural.

PROGRESS OF CREATION OF THE OPERATIONS MANUAL

(the documentation by which an organization provides guidance for executive committee members, other committee members and general membership)

Phase 1 – creation of the individual committee and membership documents and resource documents. Phase 1 has been active for years

Phase 2 – sending the documents to the committee members as well as former executive committee members for input. Phase 2 is in the beginning stages.

Phase 3 – involving our membership in the approval process

WEBSITE

Major element and design updates:

- provision for an individual login platform for members
- a quick reference calendar in the *What Updates Have I Missed* section
- membership lists are updated regularly and posted on website

VICE-PRESIDENT'S REPORT (Jani Galarneau)

WORKSHOPS at the Orange Hub

Mar. 23, 6 pm, Beverly Oliwa , Zoom Poverpol presentation, free

June 18 , 10 am – 1:30 pm sculpture workshop , members \$50. nonmembers, \$65.

Sept. 10, Sharon Foster-Moore, Clay tiles.

Nov 19, painting the tiles.

May 28, 29 Jani Galarneau and Seraya Smit , Mixed media workshop, \$120.

April 29, 30, May 1, Suzanne Northcott workshop, \$375.

SHOWS

July, Aug, Sept – Milner Library (details follow in Rhea Jansen's report).

May 14 – Illuminating Edmonton, 12"x12" size, all pieces to be priced the same.

Oct 14, 15 – Annual Juried Show, the requirements for this year are 2 meetings and 2 critiques, new members exempt from this rule, 3 pieces, send theme suggestions to Jani Galarneau.

April, May – Propaganda Hair Salon Show (124 St. and 108 Ave), \$10 hanging fee, it's been decided to send percentage of sales to Red Cross for Ukrainian relief.

TREASURER'S REPORT (Penny Lamnek)

no report at this time

NEWSLETTER (Rob Guetre)

Send photos of critique paintings to Rob for newsletter within the week following the meetings, Betty Dean has offered her assistance if needed and Rob Guetre will help for this meeting.

Resolution of photos

It's best to send them with the same size and resolution as the photo taken by the camera to ensure they can be used.

OTHER BUSINESS

MEMBERSHIP NAME TAGS Jan Fraser

cost \$15 - \$16

MILNER LIBRARY SHOW Rhea Jansen

July 3 (hanging) – Sept. 24 (take down) size, width restricted to 18"

Theme: Bridges Connecting Diversity, Artists should interpret theme as they wish but should write a short explanation.

Mural will hang in the show

SCHOLARSHIP APPLICATIONS due April 30, apply on line

ADAPTABILITIES SILENT AUCTION sign up sheet is on the display table

CONGRATULATIONS to Aeris Osborne for being chosen as Province of Alberta's Artist in Residence

ATTENDANCE

19 members attended, 5 guests, 17 pieces of artwork submitted for critique (1 critique not published).

MOTION TO ADJOURN

Nola moved meeting adjourned, seconded by Diana Samantha Williams Chapelsky is tonight's critic. Gofers, Cynthia Carson, Johanne Septou. Jan Fraser thanked the critic.

START CREATING!

The Milner Library Committee has picked a theme for the show in July

We met at the library on Wednesday, February 23 and checked out the gallery spaces there. We can accept paintings no wider than 18 in. and less wide would be better. The length could be up to 36 in. but hopefully, some will be shorter. The library is a lovely building and we look forward to showing our work there.

The show will be called "Bridges: Connecting Diversity."

If you have any questions please send them to rheajansen@shaw.ca

Website What's New

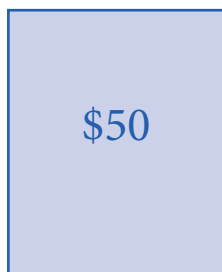
MEMBERS' ONLY UPDATE

- Streamlined Landing Page
- Resource Directory
- What Updates Have I Missed
- Calendar



A NOTE TO MEMBERS REGARDING ADVERTISING IN YOUR NEWSLETTER...

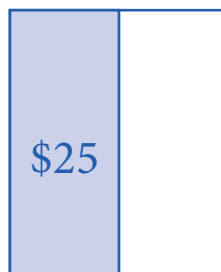
In order to help cover the circulation costs for our newsletter, paid advertising relevant to any artistic activities is being sought from artist groups, suppliers, and individuals. Rates on a per insertion basis are indicated in the page templates (pictured below). Please refer to these for sizes and shapes relative to the printed area of a newsletter page.



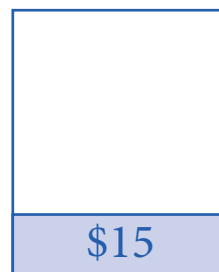
full page



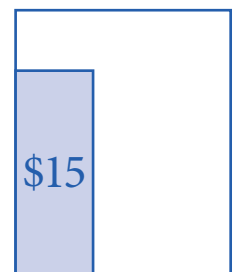
half page horizontal...



and vertical



quarter page horizontal...



and vertical

Important Notice Regarding Liability and Insurance

As per EAC Policies:

- As a condition of entering the show, participants agree that the EAC will not be held liable for damage, loss or theft of their artwork.
- Participants shall be responsible for obtaining adequate insurance coverage for their art work.

Insurance purchased for EAC is liability only, and does not cover personal items or art work.

Edmonton Art Club Executive and Other Committees 2021

Position	Name	Contact Information	
EXECUTIVE COMMITTEE MEMBERS			
President	Seraya Smit	serayasmit@hotmail.com	780 953-8919
Vice President	Jani Galarneau	jgalarneau@live.ca	780 994-9210
Past President	Rhea Jansen	rheajansen@shaw.ca	780 242-6153
Treasurer	Penny Lamnek	hans.lamnek@outlook.com	780 689-2410
Correspondence Secretary	vacant		
Recording Secretary	Frances Hessels	hessels@shaw.ca	780 436-4912
	Eleanor MacAllister*	emaca418@gmail.com	780 886-3186
OTHER COMMITTEE MEMBERS			
Critic Organizer	Ada Wong	artsinabox@gmail.com	780 434-3642
Critique Writer	Jenny Rodrigue	jenita8237@gmail.com	587 879-5367
Critique Photographer	Betty Dean	marydean@telus.net	780 466-9152
Grants Coordinator	Betty Dean	marydean@telus.net	780 466-9152
	Nola Bukvi	nbukvi@shaw.ca	780 444-0927
Grants Committee	Andrew Bedingfield	bedingfield@email.com	780 901-2431
	Donna Chamberland	donnachamberland@shaw.ca	780 250-7414
Historian	Johanne Septou	rseptou@telus.net	780 437-2504
Librarian	Barb Stachow	bstachow@telus.net	780 457-2356
Membership Committee	Jan Fraser	janfraserart@gmail.com	780 435-7525
	Marge Somkuti	somkutimarge@hotmail.com	780 953-3260
Newsletter Producer / Editor	Rob Guetre	rsguetre@gmail.com	780 468-4009
Newsletter Contributor	Betty Dean	marydean@telus.net	780 466-9152
	Ted Widen	twiden@gmail.com	587 497-2262
Newsletter Advertising	Marge Somkuti	somkutimarge@hotmail.com	780 953-3260
Orange Hub Committee	Seraya Smit	serayasmit@hotmail.com	780 953-8919
	Jani Galarneau	jgalarneau@live.ca	780 994-9210
	Betty Dean	marydean@telus.net	780 466-9152
Scholarships Committee	Betty Dean	marydean@telus.net	780 466-9152
	Rhea Jansen	rheajansen@shaw.ca	780 242-6153
Social Convener	Jani Galarneau	jgalarneau@live.ca	780 994-9210
	Seraya Smit	serayasmit@hotmail.com	780 953-8919
Social Media	Seraya Smit (admin)	serayasmit@hotmail.com	780 953-8919
	Jasmin Alstad (editor)	jasminbaldwin1@gmail.com	780 233-4603
Webmaster	Seraya Smit	serayasmit@hotmail.com	780 953-8919
Workshops Committee	Jani Galarneau (admin)	jgalarneau@live.ca	780 994-9210
	Seraya Smit	serayasmit@hotmail.com	780 953-8919

*Eleanor will act as recording secretary for Zoom meetings only. Frances Hessels to take over once we resume in person meetings.